

MICRO SWITCH
A DIVISION OF AMERICAN GENERAL ELECTRIC COMPANY
 MILWAUKEE, WISCONSIN
 FED. MFR. CODE 91929

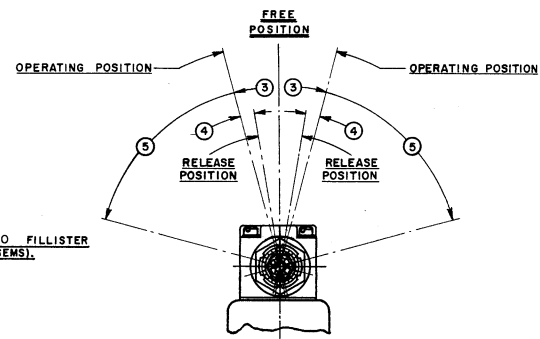
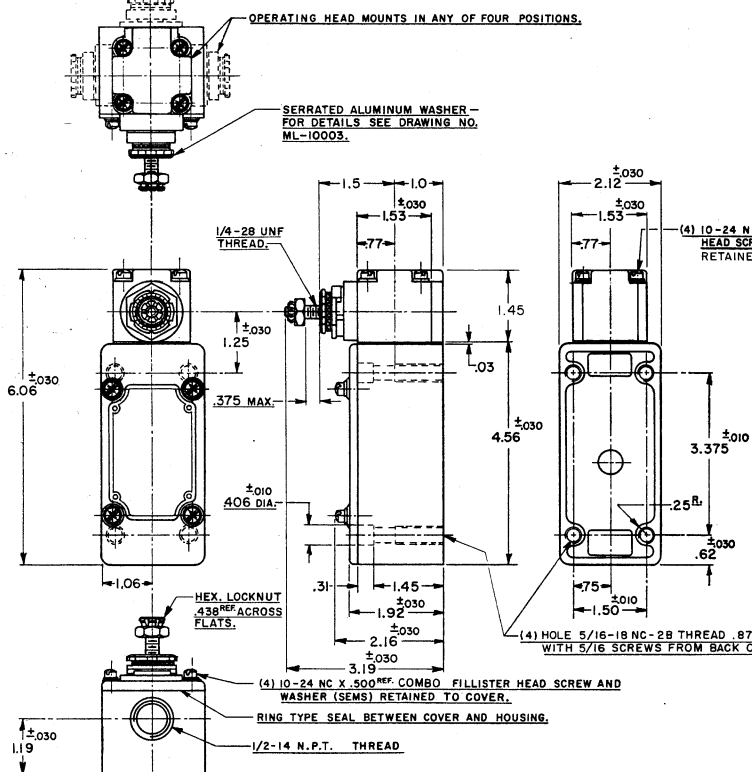
SWITCH - ENCLOSED

CATALOG LISTING
51ML22

THIS DRAWING COVERS A PROPRIETARY ITEM AND IS THE PROPERTY OF MICRO SWITCH, A DIVISION OF HONEYWELL. THIS DRAWING IS NOT TO BE COPIED OR USED WITHOUT THE APPROVAL OF MICRO SWITCH.



51ML22
 DRAWING NUMBER
 ISSUE 10
 REVISIONS
 A 0052194
 B 0000001-4
 C 0074287
 D J W
 E J P R 93
 DRAWN J A P 26 SEPT 63
 CHECK C E L 20 SEPT 63
 APPROVE S R 4813
 REPLACES 51ML22



NOTES

1 - IT IS ESSENTIAL TO PREVENT ENTRANCE OF HARMFUL AGENTS THRU THE CONDUIT OPENING TO OBTAIN THE FULL BENEFIT OF THE SEALED CONSTRUCTION PROVIDED IN THIS UNIT

2 - SWITCH IS ASSEMBLED FOR ACTUATION IN CLOCKWISE DIRECTION TO CONVERT SWITCH FOR ACTUATION IN THE COUNTER-CLOCKWISE DIRECTION ONLY, REMOVE THE HEAD AND SLIDE THE CAM TOWARD THE REAR OF THE HEAD SUFFICIENTLY TO DISENGAGE FROM THE FLATS ON THE SHAFT. ROTATE THE CAM 180° AND RE-ENGAGE THE CAM WITH THE FLATS ON THE SHAFT

3 - SHAFT MAY BE ADJUSTED TO ACTUATE THE SWITCH IN THE CLOCKWISE DIRECTION ONLY, OR THE COUNTER-CLOCKWISE DIRECTION ONLY.

CHARACTERISTICS	
OPERATING TORQUE	25 OZ. IN. MAX.
FULL OVERTRAVEL TORQUE	35 OZ. IN. MAX.
RELEASE TORQUE	4 OZ. IN. MIN.
PRETRAVEL	3 12° MAX.
DIFFERENTIAL TRAVEL	4 5° MAX.
OVERTRAVEL	5 60° MIN.
SWITCH-BASIC REPLACEMENT	1MK5

ELECTRICAL DATA	
CONTACT ARRANGEMENT	S. P. D. T.
BREAK DISTANCE	.020 MIN.
28-150, 240, 480 OR 600 VAC; 34 HP-120 VAC; 1 1/2 HP-240 VAC; 1/2 A-115 VDC, 1/4 A-230 VDC PILOT DUTY RATING: 600 VAC MAX.	

SCALE 1/2 TO 1	
DO NOT SCALE PRINT	
UNLESS OTHERWISE SPECIFIED DIMENSIONS ARE IN INCHES	
TOLERANCES ARE:	
ONE PLACE	±.050
TWO PLACE	±.015
THREE PLACE	±.005
ANGLES	±.005
WEIGHT	

