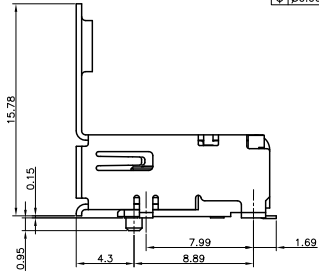
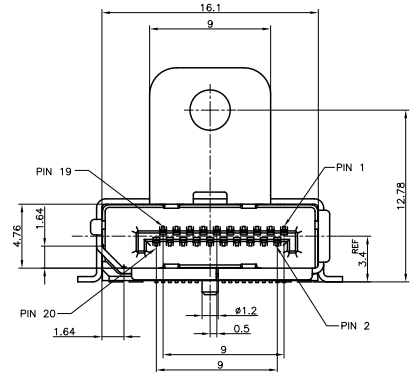
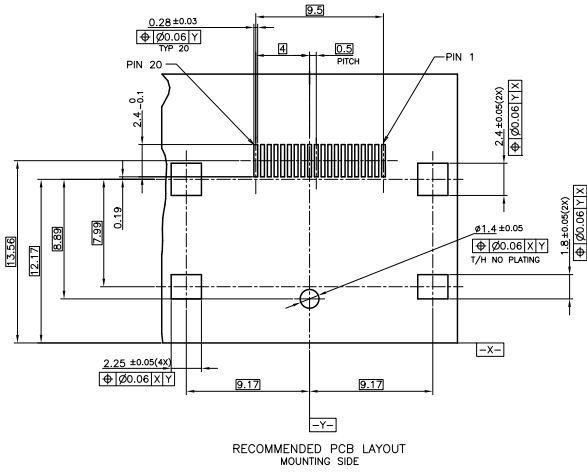
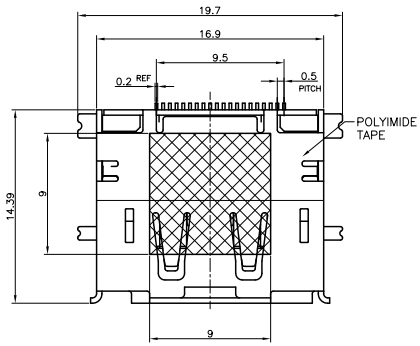


THIS DRAWING IS UNPUBLISHED. RELEASED FOR PUBLICATION JUL, 2008.  
 COPYRIGHT 2008 BY TYCO ELECTRONICS CORPORATION. ALL RIGHTS RESERVED.

DW		REV		REVISONS	
REV	DATE	REV	DATE	DESCRIPTION	DATE
D		D		REVISED (ECR-09-027891)	14JAN2010
					V.P.H.K

P/N:5-2040247-5; AS SHOWN



RECOMMENDED PCB LAYOUT MOUNTING SIDE

- MATERIAL:  
 HOUSING: HIGH TEMPERATURE THERMAL PLASTIC, BLACK, UL94V-0  
 CONTACT: COPPER ALLOY  
 SHELL: COPPER ALLOY
- FINISH:  
 CONTACT: CONTACT AREA: 0.76 MINIMUM MICRON GOLD PLATING OVER  
 1.27 MINIMUM MICRON NICKEL PLATING ALL  
 SOLDER TAIL AREA: 2.54 MINIMUM MICRON MATTE TIN PLATING.  
 SHELL: MATTE TIN PLATING.
- 3 THIS PRODUCT IS PACKED IN REEL.  
 4 HALOGEN FREE.

WITH	5-2040247-5
WITHOUT	2040247-5
	POLYIMIDE TAPE PART NUMBER

THIS DRAWING IS A CONTROLLED DOCUMENT.		PIN Y. HIRATA 19FEB2004 DW T. KUSUHARA 19FEB2004 DW T. KUSUHARA 19FEB2004 DW T. KUSUHARA 19FEB2004 PRODUCT SPEC 08-78515 APPLICATION SPEC WEIGHT 2.82g CUSTOMER DRAWING		Tyco Electronics Corporation Kawasaki, Japan
DIMENSIONS: 単位:mm UNLESS SPECIFIED OTHERWISE	FINISH: 塗層 0 P/LC ± 0.3 1 P/LC ± 0.3 2 P/LC ± 0.3 3 P/LC ± 0.3 4 P/LC ± 0.3	SIZE: A2 CAGE CODE: 00779 DRAWING NO: 2040247	RECEPTACLE ASSEMBLY DISPLAYPORT RA SMT STD SMT-LEG WITH FLANGE SCALE: 5:1 SHEET: 1 of 3 REV: D	

AMP 1471-9 REV 31MMR000

2040247

4

3

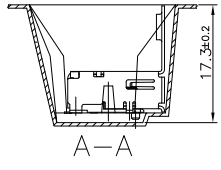
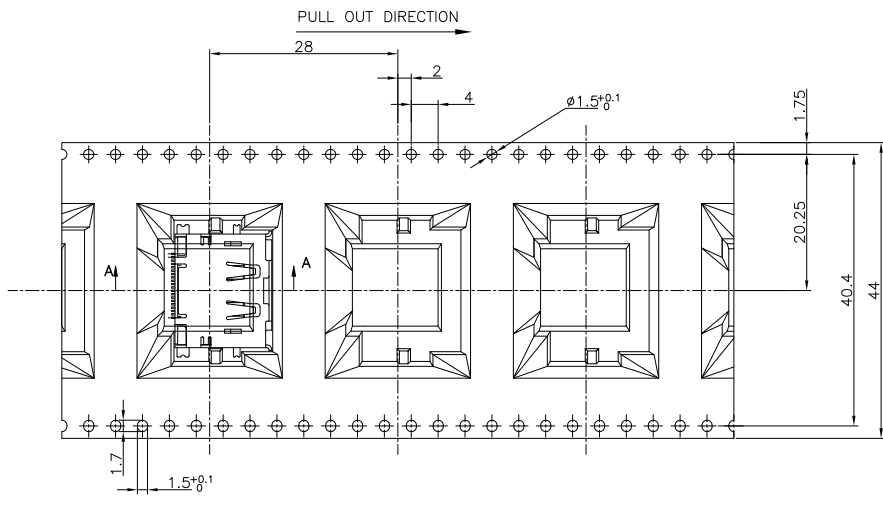
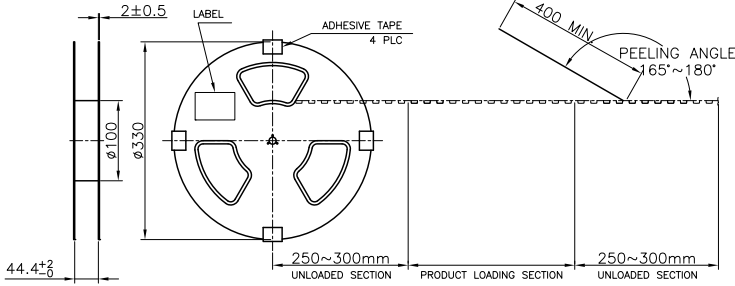
2

1

THIS DRAWING IS UNPUBLISHED. RELEASED FOR PROMOTION JUL, 2008.  
 COPYRIGHT 2008 BY TYCO ELECTRONICS CORPORATION. ALL RIGHTS RESERVED.

DW		REVISIONS			
REV	DATE	DESCRIPTION	DATE	BY	APPD
-	-	SEE SHEET 1	-	-	-

PCAKING FOR 2040247-5

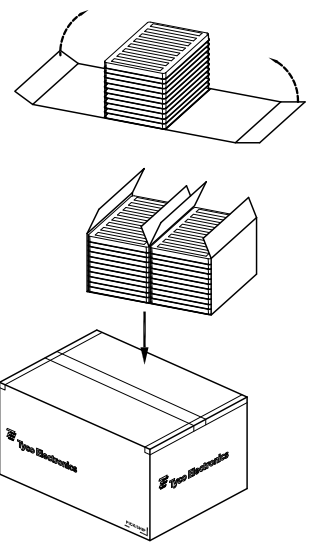
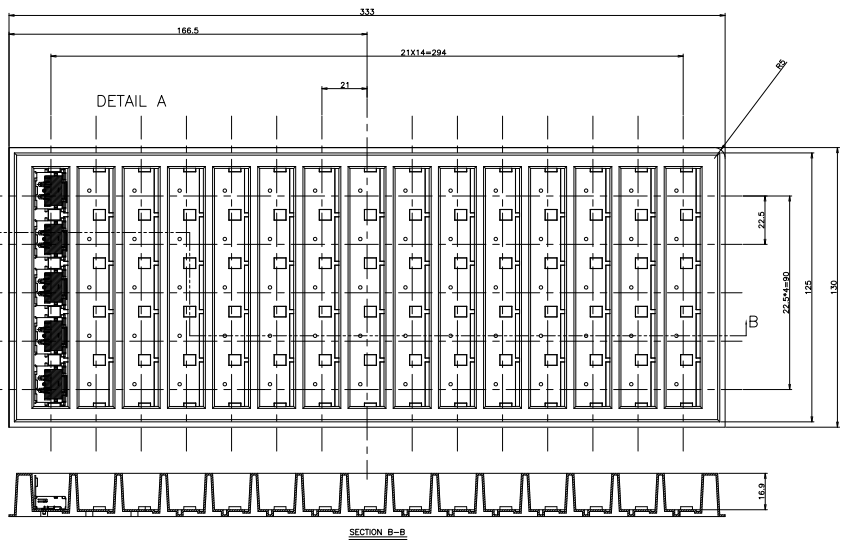


THIS DRAWING IS A CONTROLLED DOCUMENT.		Tyco Electronics Corporation Kawasaki, Japan	
DIMENSIONS: 単位:mm 	TOLERANCES UNLESS OTHERWISE SPECIFIED: 公差:mm 0 PLC $\pm 0.3$ 1 PLC $\pm 0.3$ 2 PLC $\pm 0.3$ 3 PLC $\pm 0.3$ 4 PLC $\pm 0.3$	PRODUCT SPEC 製品仕様 APPLICATION SPEC 動作仕様書	SIZE: A2 CASE CODE: 00779 DRAWING NO: 2040247 RESTRICTED TO:
MATERIAL: 材料:	FINISH: 仕上:	WEIGHT: 重量:	CUSTOMER DRAWING SCALE: NTS SHEET: 2 of 3 REV: D

THIS DRAWING IS UNPUBLISHED. RELEASED FOR PUBLICATION JUL, 2008.  
 COPYRIGHT 2008 BY TYCO ELECTRONICS CORPORATION. ALL RIGHTS RESERVED.

DW		REVISONS			
REV	DATE	DESCRIPTION	DATE	BY	APPD
-	-	SEE SHEET 1	-	-	-

PACKING FOR 5-2040247-5



1. PACKING MATERIAL :
  - 1.1 TRAY: PS
  - 1.2 SHIPPING CARTON: CORRUGATED FIBER
2. QUANTITY :
  - 2.1 PRIMARY PACKING: 75 PCS/TRAY
  - 2.2 SECONDARY PACKING: 20 TRAY (1500 PCS)/BOX

THIS DRAWING IS A CONTROLLED DOCUMENT.		DATE	APPROVER	Tyco Electronics Corporation Kawasaki, Japan
DIMENSIONS 単位:mm	TOLERANCES UNLESS OTHERWISE SPECIFIED: —単位:mm	DWG	CHK	
	0 PLC ± 0.3	APPD	TRG	RECEPTACLE ASSEMBLY DISPLAYPORT RA SMT STD SMT-LEG WITH FLANGE
	1 PLC ± 0.3	PRODUCT SPEC 製品仕様	SIZE	
	2 PLC ± 0.3	APPLICATION SPEC 動作仕様書	CAGE CODE	
	3 PLC ± 0.3	WEIGHT	DRAWING NO	
MATERIAL 材質	FINISH 仕上	4 PLC ± 0.3	RESTRICTED TO	A2 00779 2040247 SCALE NTS SHEET 3 of 3 REV D
CUSTOMER DRAWING				