

COVENTRY™

FROM OUR CLEANROOM TO YOURS.



TABLE OF CONTENT

Click on the heading or page number to go to that page.

DIAMOND SWABS	PAGE 1
SEALED POLYESTER SWABS	PAGE 2
WRAPPED POLYESTER SWABS	PAGE 2
GMR STATIC CONTROL SWABS	PAGE 3
WRAPPED FOAM SWABS	PAGE 4
SEALED FOAM SWABS	PAGE 5
CLEANROOM WIPES	PAGE 6
APPLICATION GUIDE	PAGE 7

FIND&SEARCH ENGINE

ITW CHEMTRONICS® WEBSITE

TECHNOLOGY LEADERSHIP THAT PRODUCES THE WORLD'S CLEANEST SWABS



At Coventry™, we understand exactly what you want from your swabs & wipes:

RELIABILITY AND PERFORMANCE. Products that help keep contamination out of your processes, reduce yield hits, and perform consistently shipment-to-shipment.

CLEANROOM QUALITY AND CONSISTENCY. Coventry makes the only patented swab, thanks in large part to engineered clean raw materials. Most swab and wiper components are laundered first in our Class M1 cleanroom.

EXCLUSIVE POST-MANUFACTURING PROCESSES. Coventry's Aqua-Prime™ process reduces total contamination up to 50%. Our C-Prime™ process cuts non-volatile residue up to 40%—and wiper edges are sealed using our proprietary process.

WIDEST SELECTION OF CRITICAL APPLICATION SWABS. Choose wrapped fabric for the cleanest swabs in the world. Also, select from sealed fabric, wrapped and sealed foam, plus our static control products.

PRODUCTS THAT BRING VALUE, NOT CONTAMINATION, TO YOUR PROCESSES. Strict quality controls throughout ensure consistent reliability. Clean and static-free packaging seals in contamination-free quality from our cleanroom to yours.

DEDICATED CUSTOMER SUPPORT. Get the latest Technical Data Sheets anytime by Fax On Demand: (770) 426-5447. Live support is available via our Technical Hotline at 1-800-TECH-401. We even custom engineer products for special needs.

DIAMOND SWABS™

Wrapped polyester swabs guaranteed to stand between you and a major yield hit.



51353ESD



51353



Designed for ultra-critical applications where contamination is the utmost concern. The patented Diamond Swab™ has a wrapped tubular knit head to create the cleanest swab in the world.

No other swab is as low in NVR, ionic and particle contamination. No-edge seamless head design is an exclusive.



Specify the Aqua-Prime™ process for the cleanest swab in the world.

Swab Length	Handle Width	Head Length	Head Thickness	Head Width	Handle Material	Head Material
2.8" 7.1 cm	0.10" 2.6 mm	0.78" 19.8 mm	0.16" 4.1 mm	0.16" 4.1 mm	ESD	tubular knit polyester
2.8" 7.1 cm	0.10" 2.6 mm	0.78" 19.8 mm	0.16" 4.1 mm	0.16" 4.1 mm	glass filled nylon	tubular knit polyester

SEALED POLYESTER SWABS

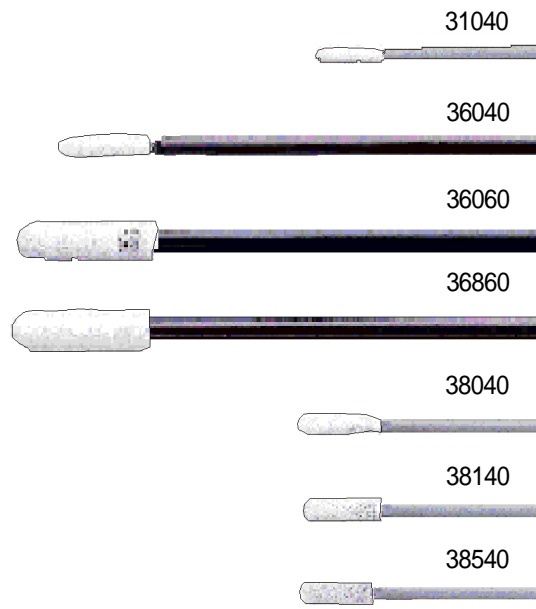
Very clean and durable all-purpose swabs.



An exceptionally clean swab produced by Coventry's proprietary process of thermoforming and welding the swab head. Featuring either knit or nonwoven fabric heads, these swabs are acid and solvent resistant. Sealed edges build in high strength with no loose fibers or particulates. Class M1 processing gives you the lowest ionic, non-volatile residue and particle contaminants.



Aqua-Prime™ process available on all sealed polyester swabs.



Swab Length	Handle Width	Head Length	Head Thickness	Head Width	Handle Material	Head Material
31040 2.8" 7.1 cm	0.10" 2.7 mm	0.44" 11.0 mm	0.12" 3.1 mm	0.12" 3.0 mm	polypropylene	knit polyester
36040 6.2" 15.8 cm	0.12" 3.1 mm	0.47" 11.9 mm	0.12" 3.0 mm	0.12" 3.0 mm	polypropylene	knit polyester
36060 5.8" 14.7 cm	0.12" 3.1 mm	0.75" 18.9 mm	0.19" 4.7 mm	0.21" 5.4 mm	polypropylene	knit polyester
36860 5.8" 14.7 cm	0.12" 3.1 mm	0.75" 18.9 mm	0.19" 4.7 mm	0.21" 5.4 mm	polypropylene	knit poly/nylon microfiber
38040 2.7" 6.9 cm	0.09" 2.3 mm	0.44" 11.2 mm	0.09" 2.4 mm	0.12" 3.0 mm	polypropylene flexible tip	knit polyester
38140 2.7" 6.9 cm	0.09" 2.3 mm	0.48" 12.1 mm	0.06" 1.6 mm	0.12" 3.0 mm	polypropylene flexible tip	knit polyester
38540 2.7" 6.9 cm	0.09" 2.3 mm	0.46" 11.7 mm	0.04" 1.0 mm	0.12" 3.0 mm	polypropylene	nonwoven polyester

WRAPPED POLYESTER SWABS

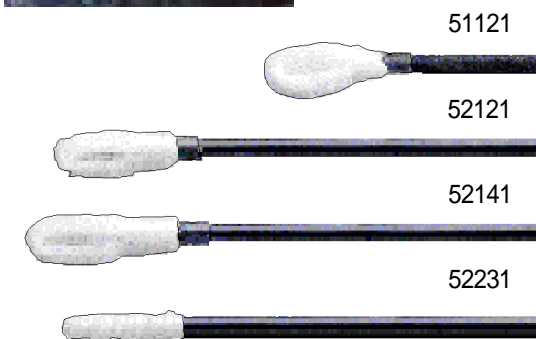
Cleanroom washed fabric formed into a unique solvent retaining swab.



Engineered for unique applications requiring a combination of high solvent retention with the cleanliness of Class M1 processed polyester. Seamless design is lint free. High-strength, adhesive-free swab, durable head construction.



Aqua-Prime™ process available on all wrapped polyester swabs.



Swab Length	Handle Width	Head Length	Head Thickness	Head Width	Handle Material	Head Material
51121 2.8" 7.1 cm	0.10" 2.5 mm	0.40" 10.2 mm	0.25" 6.5 mm	0.23" 5.7 mm	glass filled nylon	knit polyester
52121 6.3" 15.9 cm	0.12" 3.1 mm	0.40" 10.2 mm	0.26" 6.5 mm	0.24" 6.0 mm	glass filled nylon	knit polyester
52141 6.2" 15.8 cm	0.12" 3.1 mm	0.47" 12.0 mm	0.27" 7.0 mm	0.24" 6.1 mm	glass filled nylon	knit polyester
52231 6.2" 15.8 cm	0.12" 3.1 mm	0.39" 10.0 mm	0.16" 4.2 mm	0.16" 4.2 mm	glass filled nylon	tubular knit polyester

GMR STATIC CONTROL SWABS

Protects components from static contamination.

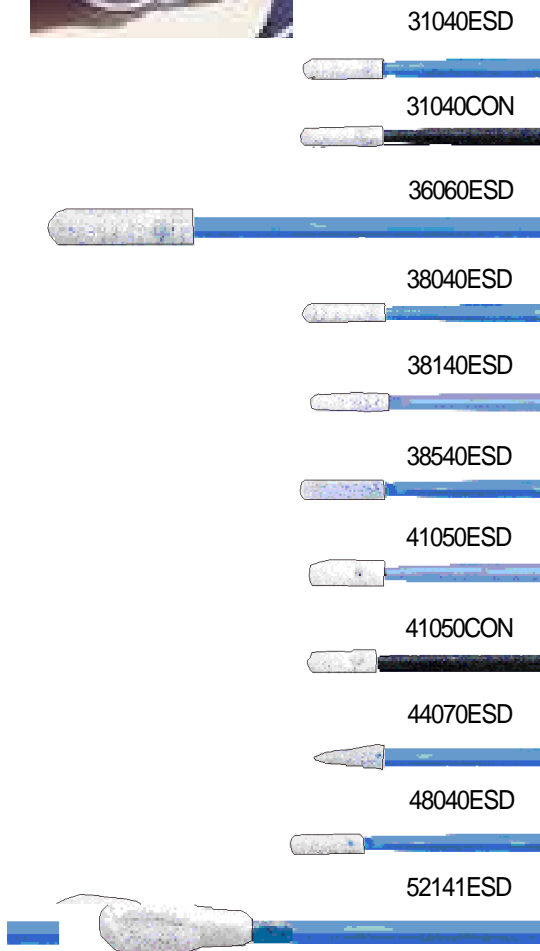


Engineered to eliminate damage from static electricity. Now you have a choice in specifying the ultra-clean static dissipative or conductive swab. The handles of these swabs will dissipate 99% of a 5,000 volt (5 KV) charge in 0.01 seconds for conductive and in less than 0.5 seconds for ESD. Our handles are also solvent and acetone resistant, leaving behind no residue.

Choose between our Class M1 laundered polyester or 100 pore per inch ultra-clean foam.



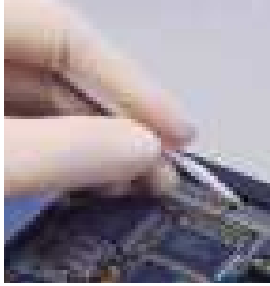
Aqua-Prime™ process available on all polyester swabs.



Swab Length	Handle Width	Head Length	Head Thickness	Head Width	Handle Material	Head Material
2.8" 7.1 cm	0.10" 2.7 mm	0.44" 11.0 mm	0.12" 3.1 mm	0.12" 3.0 mm	ESD	knit polyester
2.8" 7.1 cm	0.10" 2.7 mm	0.44" 11.0 mm	0.12" 5.1 mm	0.12" 3.0 mm	conductive	knit polyester
5.8" 14.7 cm	0.12" 3.1 mm	0.75" 18.9 mm	0.19" 4.7 mm	0.21" 5.4 mm	ESD	knit polyester
2.7" 6.9 cm	0.09" 2.3 mm	0.44" 11.2 mm	0.09" 2.4 mm	0.12" 3.0 mm	ESD flexible tip	knit polyester
2.7" 6.9 cm	0.09" 2.3 mm	0.48" 12.1 mm	0.06" 1.6 mm	0.12" 3.0 mm	ESD flexible tip	knit polyester
2.7" 6.9 cm	0.09" 2.3 mm	0.46" 11.7 mm	0.04" 1.0 mm	0.12" 3.0 mm	ESD flexible tip	nonwoven polyester
2.8" 7.2 cm	0.10" 2.6 mm	0.40" 10.2 mm	0.13" 3.3 mm	0.14" 3.5 mm	ESD	polyurethane foam
2.8" 7.2 cm	0.10" 2.6 mm	0.40" 10.2 mm	0.13" 3.3 mm	0.14" 3.5 mm	conductive	polyurethane foam
3.2" 8.0 cm	0.10" 2.4 mm	0.39" 9.9 mm	0.11" 2.7 mm	0.13" 3.3 mm	ESD	polyurethane foam
2.7" 6.8 cm	0.09" 2.2 mm	0.41" 10.5 mm	0.10" 2.5 mm	0.12" 3.0 mm	ESD flexible tip	polyurethane foam
6.2" 15.8 cm	0.12" 3.1 mm	0.47" 12.0 mm	0.27" 7.0 mm	0.24" 6.1 mm	ESD	knit polyester

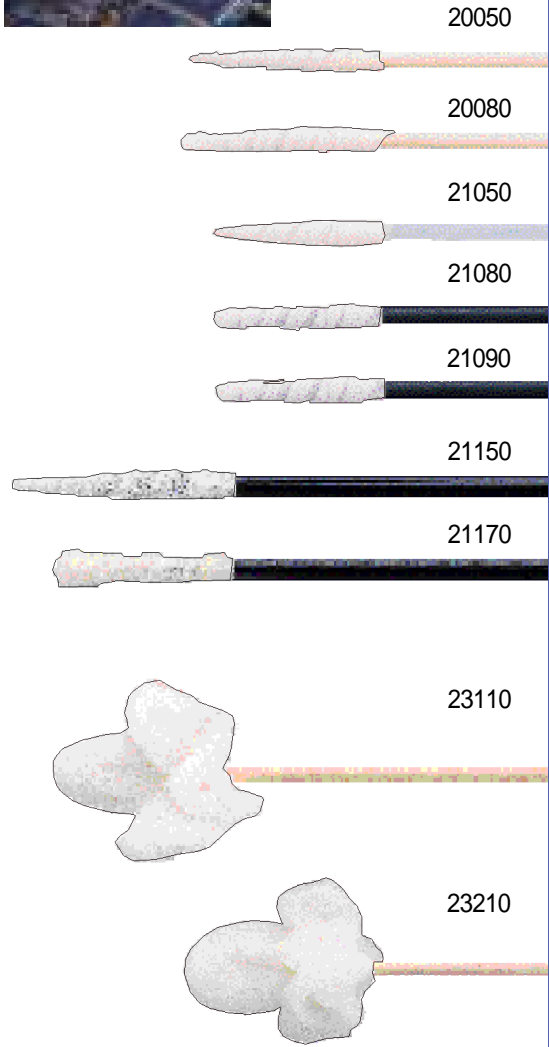
WRAPPED FOAM SWABS

Durable wrapped foam swabs designed for precise applications.



Our wrapped foam swabs provide good particle entrapment and work well as solvent applicators. The small tips on many of the styles allow use in very tight tolerance areas. With the most durable head of any foam swabs, wrapped foam delivers superior abrasion resistance for removal of tough contaminants. Wicking action pulls solvent from surfaces.

CPrime Specify C-Prime™ process for super-critical applications.



Swab Length	Handle Width	Head Length	Head Thickness	Head Width	Handle Material	Head Material
2.6" 6.7 cm	0.09" 2.2 mm	1.06" 27.0 mm	0.12" 3.2 mm	0.12" 3.2 mm	wood	polyurethane foam
2.6" 6.7 cm	0.09" 2.2 mm	0.89" 22.6 mm	0.11" 2.8 mm	0.11" 2.8 mm	wood	polyurethane foam
2.8" 7.1 cm	0.10" 2.5 mm	1.08" 27.5 mm	0.14" 3.7 mm	0.14" 3.7 mm	nylon	polyurethane foam
2.8" 7.1 cm	0.10" 2.6 mm	0.88" 22.4 mm	0.13" 3.2 mm	0.13" 3.2 mm	glass filled nylon	polyurethane foam
2.8" 7.1 cm	0.10" 2.6 mm	0.93" 23.7 mm	0.14" 3.5 mm	0.14" 3.5 mm	glass filled nylon	polyurethane foam
6.2" 15.9 cm	0.12" 3.1 mm	1.17" 29.6 mm	0.15" 3.9 mm	0.15" 3.9 mm	glass filled nylon	polyurethane foam
6.3" 15.9 cm	0.12" 3.1 mm	1.26" 32.0 mm	0.20" 5.2 mm	0.20" 5.2 mm	glass filled nylon	polyurethane foam
6.0" 15.1 cm	0.09" 2.2 mm	1.08" 27.5 mm	0.47" 12.00 mm	0.47" 12.00 mm	wood	PU foam over cotton
3.1" 7.9 cm	0.09" 2.2 mm	1.08" 27.5 mm	0.47" 12.00 mm	0.47" 12.00 mm	wood	PU foam over cotton

SEALED FOAM SWABS

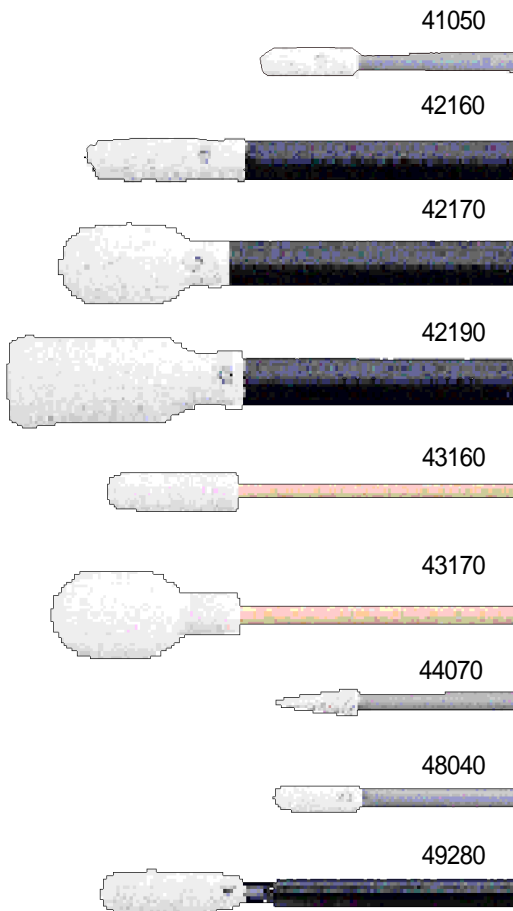
Economical general purpose swabs. Best solvent retention.



The most cost-effective swabs for general purpose applications. 100 ppi reticulated medical grade foam provides excellent particle entrapment. The open cell structure gives the best solvent holding ability of any style of swab.

These swabs are free of adhesives or binders that could contaminate your process. Fiberless construction does not generate particles.

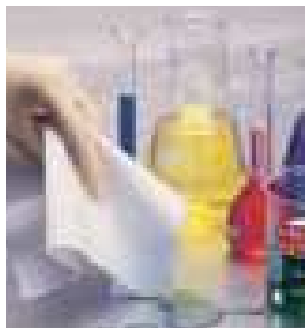
CPrime specify C-Prime™ process for super-critical applications.



Swab Length	Handle Width	Head Length	Head Thickness	Head Width	Handle Material	Head Material
41050 2.8" 7.2 cm	0.10" 2.6 mm	0.40" 10.2 mm	0.13" 3.3 mm	0.14" 3.5 mm	polypropylene	polyurethane foam
42160 6.7" 16.9 cm	0.21" 5.2 mm	0.73" 18.5 mm	0.21" 5.3 mm	0.21" 5.4 mm	polypropylene	polyurethane foam
42170 6.6" 16.8 cm	0.21" 5.2 mm	0.73" 18.7 mm	0.32" 8.0 mm	0.41" 10.4 mm	polypropylene	polyurethane foam
42190 6.6" 16.8 cm	0.21" 5.2 mm	1.12" 28.5 mm	0.32" 8.2 mm	0.37" 9.5 mm	polypropylene	polyurethane foam
43160 6.0" 15.2 cm	0.09" 2.2 mm	0.75" 19.0 mm	0.20" 5.2 mm	0.21" 5.2 mm	wood	PU foam over cotton
43170 6.0" 15.2 cm	0.09" 2.2 mm	0.80" 20.3 mm	0.33" 8.4 mm	0.35" 8.8 mm	wood	PU foam over cotton
44070 3.2" 8.0 cm	0.10" 2.4 mm	0.39" 9.9 mm	0.11" 2.7 mm	0.13" 3.3 mm	polypropylene	polyurethane foam
48040 2.7" 6.8 cm	0.09" 2.2 mm	0.41" 10.5 mm	0.10" 2.5 mm	0.12" 3.0 mm	polypropylene	polyurethane foam
49280 6.5" 16.4 cm	0.12" 3.1 mm	0.68" 17.3 mm	0.18" 4.7 mm	0.19" 4.7 mm	polypropylene	polyurethane foam

CLEANROOM WIPES

The cleanest wipes you can buy.



Econowipes



Cotton Wipes



Cleanroom Chamois



Sealed-Edge Wipes

Add an extra level of protection with Coventry wipes and chamois products. Our exclusive edge sealing process gives you the advantage of the lowest contamination levels available.



All laundered wipes are processed in our Class M1 cleanrooms.

Foam Wipes Fine cell,reticulated foam 100 pores per inch	6109	25 qty.	5/64" x 6" x 9" 2 mm x 15.2 cm x 22.9 cm
	6110	10 qty.	5/64" x 9" x 10" 2 mm x 22.8 cm x 25.4 cm
	6509	25 qty.	1/8" x 6" x 9" 3.2 mm x 15.2 cm x 22.9 cm
Poly-Wipes Light-weight polyester	6204	300 qty.	4" x 4"/10.2 cm x 10.2 cm
	6206	300 qty.	6" x 6"/15.3 cm x 15.3 cm
	6209	150 qty.	9" x 9"/22.9 cm x 22.9 cm
	6212	75 qty.	12" x 12"/30.5 cm x 30.5 cm
	6214	75 qty.	14" x 18"/35.6 cm x 45.7 cm
Sealed-Edge Wipes Light-weight, high-absorbency polyester	6204LE	300 qty.	4" x 4"/10.2 cm x 10.2 cm
	6206LE	300 qty.	6" x 6"/15.3 cm x 15.3 cm
	6209LE	150 qty.	9" x 9"/22.9 cm x 22.9 cm
Poly-Wipes Heavy-weight, high-absorbency polyester	6254	300 qty.	4" x 4"/10.2 cm x 10.2 cm
	6256	300 qty.	6" x 6"/15.3cm x 15.3 cm
	6259	150 qty.	9" x 9"/22.9 cm x 22.9 cm
Sealed-Edge Wipes Heavy-weight, high-absorbency polyester	6254LE	300 qty.	4" x 4"/10.2 cm x 10.2 cm
	6256LE	300 qty.	6" x 6"/15.3 cm x 15.3 cm
	6259LE	150 qty.	9" x 9"/22.9 cm x 22.9 cm
Nylon Wipes Heavy-weight, knit construction	6309	50 qty.	9" x 9"/22.9 cm x 22.9 cm
	6309C		C-Prime™ processed 6309
Econowipes™ Polyester/cellulose blend, nonwoven	6704	1200 qty.	4" x 4"/10.2 cm x 10.2 cm
	6704-300	300 qty.	4" x 4"/10.2 cm x 10.2 cm
	6709	300 qty.	9" x 9"/22.9 cm x 22.9 cm
	6712	150 qty.	12" x 12"/30.5 cm x 30.5 cm
	6736	25 qty.	36" x 36"/91.4 cm x 91.4 cm
Cotton Wipes Low lint,bias cut	6809	300 qty.	9" x 9"/22.9 cm x 22.9 cm
Cleanroom Chamois™ Sealed edge microfiber wipe	7344LE	100 qty.	3.75" x 3.75"/9.2 cm x 9.2 cm
	7348LE	50 qty.	8" x 8"/20 cm x 20 cm
Ion Emitter Tip Cleaner	2702	20 per bag	

Add a "V" to the part number of any laundered wiper for Vacuum Packaging.

Add a "C" to the part number for C-Prime Processing for foam and nylon wipes. Call for pricing.

APPLICATION GUIDE

Industry	Application	Product Recommendation
Semiconductor	Chamber Maintenance	Sealed or Wrapped Polyester Swabs 52141 36060 51353
Disk Drive	Head Gimble Assembly	GMR Technology Swabs—Polyester Head 38140ESD 51353ESD 
	Head Stack Assembly	GMR Technology Swabs—Foam Head 44070ESD 41050ESD  48040ESD
	Spindle Motors and Other Bearing Assemblies	Sealed or Wrapped Foam Swabs 21050 44070 41050 21090
Pharmaceutical	Cleaning Validation	Sealed or Wrapped Polyester Swabs 36060 52141 52121 51121 
Electronics	Rework and Repair	Sealed or Wrapped Foam 44070 42190 41050
	Static Sensitive Components	44070ESD 36060ESD 41050ESD

COVENTRY™

DISTRIBUTOR:

FROM OUR CLEANROOM TO YOURS.

8125 Cobb Center Drive
 Kennesaw, GA USA 30152
 770-424-4888
 770-424-4267 Fax
 770-426-5447 Fax on Demand
 800-645-5244 Customer Service
 800-832-4401 Technical Support
 44 (0) 113 232 2625 UK
 33 1 41 88 89 00 France
 49 (0) 7041 9634-0 Germany
 45 098 3300 Denmark
 65-278-0811 Singapore
 852-2577-5187 Hong Kong

© 1999 Coventry Cleanroom Products
 COV PB.3.1 9070

