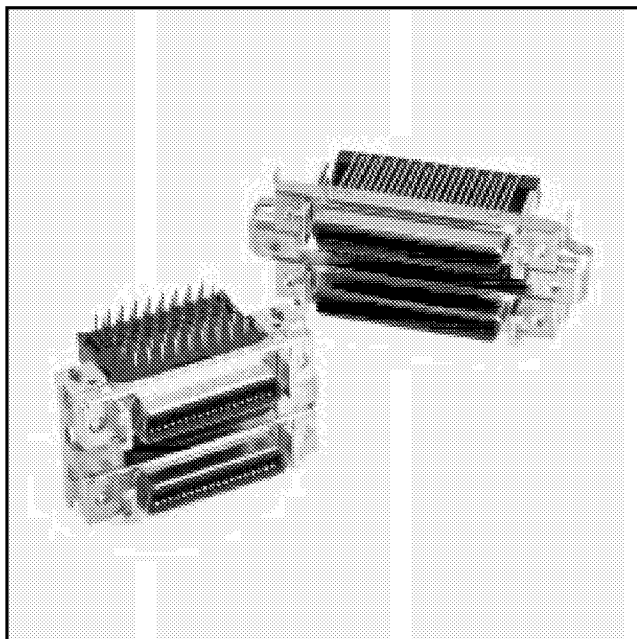


# .050" Mini D Ribbon (MDR) Connectors

Boardmount Thru Hole R. A. Condo Receptacle — Shielded 102XX-M218VE Series



145

## IMPORTANT NOTICE TO PURCHASER

ALL STATEMENTS, TECHNICAL INFORMATION AND RECOMMENDATIONS CONTAINED HEREIN ARE BASED ON TESTS WE BELIEVE TO BE RELIABLE, BUT THE ACCURACY OR COMPLETENESS THEREOF IS NOT GUARANTEED, AND THE FOLLOWING IS MADE IN LIEU OF ALL WARRANTIES, EXPRESSED OR IMPLIED:

SELLER'S AND MANUFACTURER'S ONLY OBLIGATION SHALL BE TO REPLACE SUCH QUANTITY OF THE PRODUCT PROVED TO BE DEFECTIVE. NEITHER SELLER NOR MANUFACTURER SHALL BE LIABLE FOR ANY INJURY, LOSS OR DAMAGE, DIRECT OR CONSEQUENTIAL, ARISING OUT OF THE USE OF OR THE INABILITY TO USE THE PRODUCT. BEFORE USING, USER SHALL DETERMINE THE SUITABILITY OF THE PRODUCT FOR HIS INTENDED USE, AND USER ASSUMES ALL RISK AND LIABILITY WHATSOEVER IN CONNECTION THEREWITH. NO STATEMENT OR RECOMMENDATION NOT CONTAINED HEREIN SHALL HAVE ANY FORCE OR EFFECT UNLESS IN AN AGREEMENT SIGNED BY OFFICERS OR SELLER AND MANUFACTURER.

Date Issued: December 17, 1997

TS-0671-02  
Sheet 1 of 3

## Physical

### Insulation

Material: Glass Reinforced Polyester (PBT)  
Flammability: UL 94V-0  
Color: Black

### Contact

Material: Copper Alloy (C521)  
Plating  
Underplate: 80  $\mu$ " (2.0  $\mu$ m) Nickel — QQ-N-290, Class 2  
Wiping Area: 20  $\mu$ " (0.5  $\mu$ m) Min Gold — MIL-G-45204, Type II, Grade C

### Body

Material: Zinc Alloy  
Plating: Nickel

### Shroud and Latch Hook

Material: Steel  
Plating: Nickel

**Other Materials:** Zinc Die Cast (Ground Lock)  
Stainless Steel (Joint Plate)

**Marking:** 3M Logo and Part Number

## Electrical

**Current Rating:** 1 A  
**Insulation Resistance:**  $> 5 \times 10^8 \Omega$  at 500 VDC  
**Withstanding Voltage:** 500 Vrms for 1 Minute

## Environmental

**Temperature Rating:**  $-20^\circ\text{C}$  to  $+85^\circ\text{C}$

UL File No.: E68080

### 3M Electronic Products Division

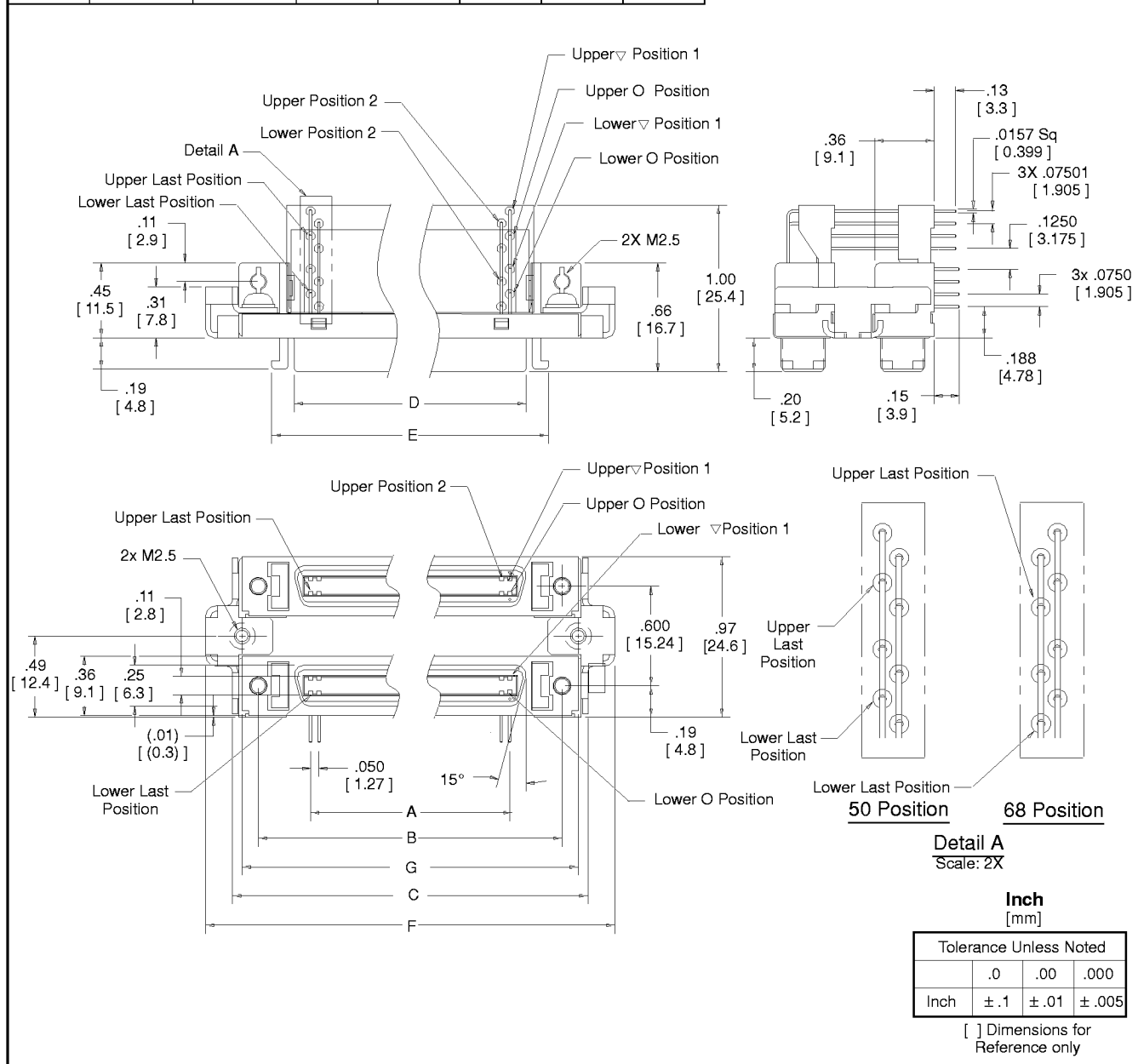
6801 River Place Blvd.  
Austin, TX 78726-9000

For technical, sales or ordering information call  
**800-225-5373**

# .050" Mini D Ribbon (MDR) Connectors

## Boardmount Thru Hole R. A. Condo Receptacle — Shielded 102XX-M218VE Series

Contact Quantity	Dimensions						
	A	B	C	D	E	F	G
50	1.200 [30.48]	1.831 [46.50]	2.17 [55.0]	1.40 [35.5]	1.67 [42.4]	2.47 [62.7]	2.03 [51.5]
68	1.650 [41.91]	2.281 [57.93]	2.61 [66.4]	1.85 [46.9]	2.12 [53.8]	2.92 [74.1]	2.48 [62.9]



### Ordering Information

**102XX-M218VE**

Contact Quantity:  
50 - 2 X 50 = 100 Positions  
68 - 2 X 68 = 136 Positions

TS-0671-02  
Sheet 2 of 3

### 3M Electronic Products Division

6801 River Place Blvd.  
Austin, TX 78726-9000

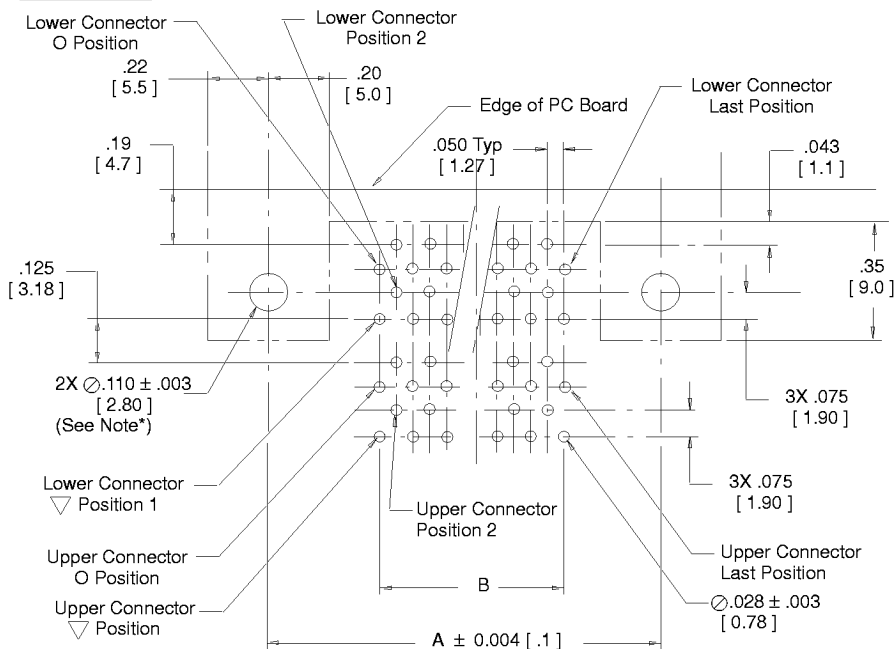
For technical, sales or ordering information call  
**800-225-5373**

# .050" Mini D Ribbon (MDR) Connector

## Boardmount Thru Hole R. A. Condo Receptacle — Shielded 102XX-M218VE Series

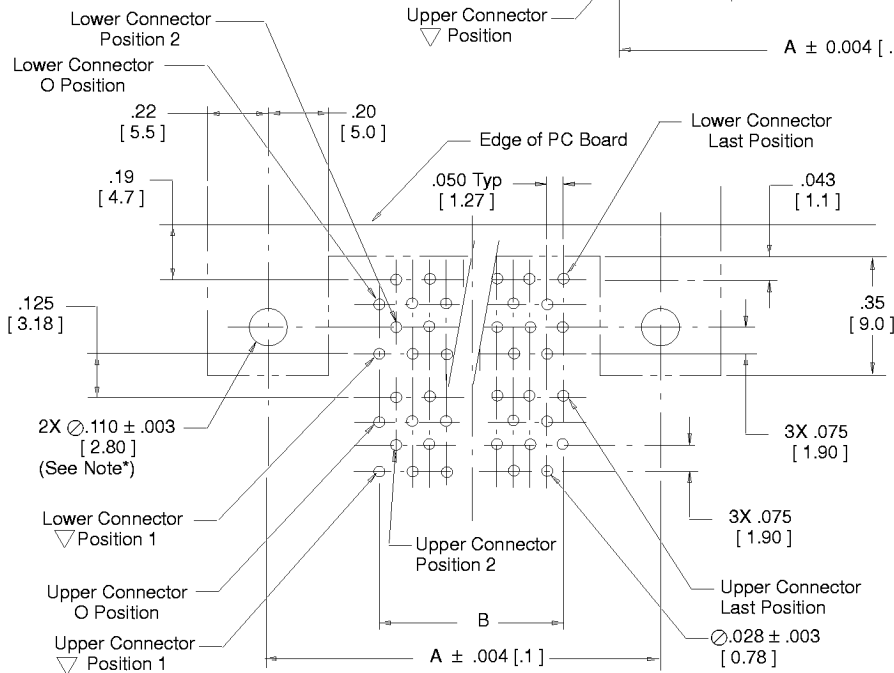
Contact Quantity	Dimensions			
	A	B	C	D
50	1.831 [46.50]	1.200 [30.48]	1.69 [42.8]	2.026 [51.45]
68	2.281 [57.93]	1.650 [41.91]	2.13 [54.2]	2.476 [62.88]

### 50 Position



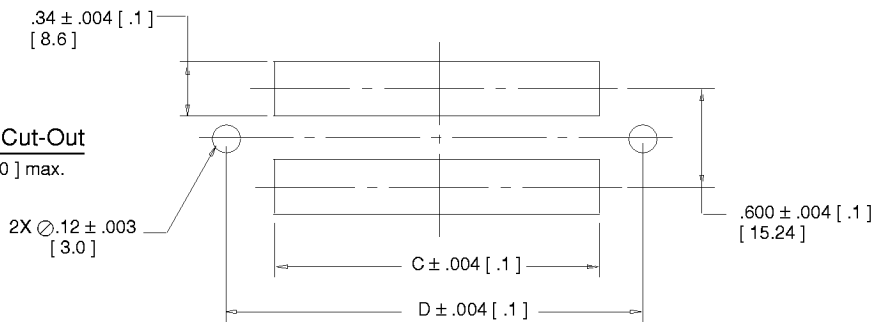
### Recommended Board Layouts Viewed from Connector Sides

### 68 Position



### Recommended Panel Cut-Out

Panel thickness .078 [2.0] max.



\*Note: Plated through holes for .062 [1.57] board thickness.

TS-0671-02  
Sheet 3 of 3

### 3M Electronic Products Division

6801 River Place Blvd.  
Austin, TX 78726-9000

For technical, sales or ordering information call  
**800-225-5373**