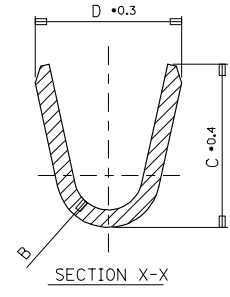
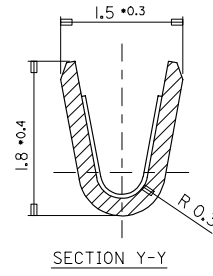
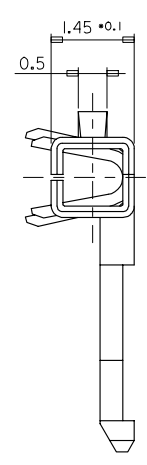
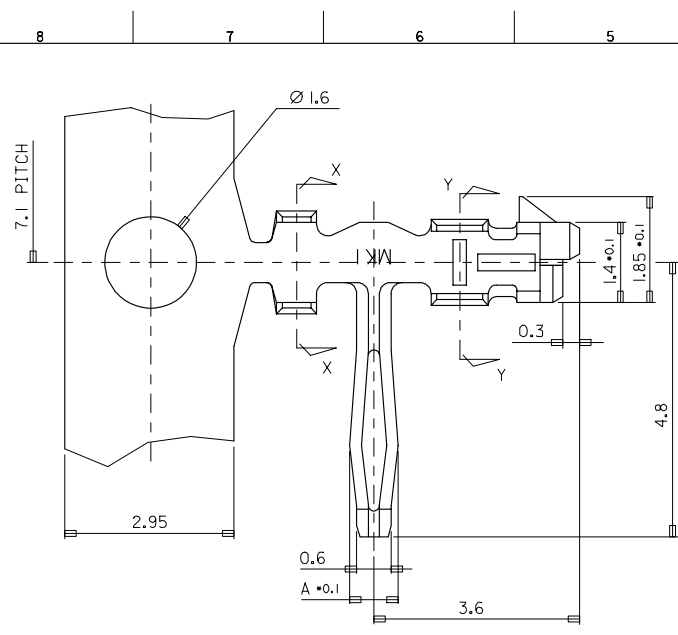
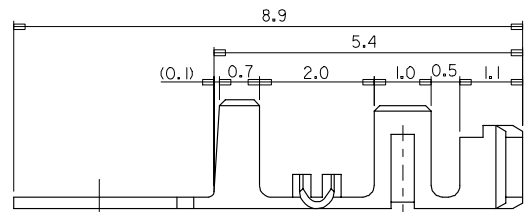


PROJECT NO. SD-35021-002
 SIMILAR ITEM
 DWG. LO.
 DO NOT SCALE DRAWING
 DIMENSION IN METRIC



- NOTES:**
- MATERIAL
 - BRASS (CDA 260)
 - PHOSPHOR BRONZE (CDA 510)
 - FINISH
 - TIN(Sn) THICKNESS = 3.0 MICROMETER MINIMUM
 - NICKEL(Ni) UNDERPLATE THICKNESS=1-3 MICROMETER
 - USED HOUSING : 35022-00**/35023-00**/68418-***00
 - THIS PRODUCT IS LEAD FREE OF 35021-**-10



POST-PLATED	PHOS. BRON.	AWG #24-#30 (INS. DIA: $\varnothing 1.5$ MAX.)	1.8	1.9	R0.4	0.85	350211360	35021-1360
POST-PLATED	PHOS. BRON.	AWG #22-#30 (INS. DIA: $\varnothing 1.9$ MAX.)	2.5	2.5	R0.7	1.05	350211160	35021-1160
PLATING	MATERIAL	WIRE RANGE	D	C	B	A	MAT'L NO.	ENG NO.

REVISED EC NO. K0R0207-0069 DRWN: H.LEONG 2006/12/22 CHK: K.S.KIM 2006/12/22 APPR: Y.SOKIM 2006/12/22	QUALITY SYMBOLS MAJOR = \blacktriangledown CRITICAL = \checkmark	GENERAL TOLERANCES: (UNLESS SPECIFIED)	SCALE 15-1 <input checked="" type="checkbox"/> mm <input type="checkbox"/> INCH	DESIGN UNITS <input checked="" type="checkbox"/> mm <input type="checkbox"/> INCH	<input checked="" type="checkbox"/> THIRD ANGLE PROJECTION	DIMENSIONS: <input type="checkbox"/> mm <input type="checkbox"/> INCH <input checked="" type="checkbox"/> mm ONLY		SHT REV REVISE ON CAD ONLY	
		4 PLACES $\pm 0.$ \pm 3 PLACES $\pm 0.$ \pm 2 PLACES $\pm 0.$ \pm 1 PLACE ± 0.3 \pm	DRAWN BY & DATE HSSHIN	TITLE: R/A B-IN TERMINAL -LEAD FREE-				MOLEX INCORPORATED KOREA	
C	DESCRIPTION REV	ANGULAR: \pm ° DRAFT WHERE APPLICABLE MUST REMAIN WITHIN DIMENSIONS	CHECKED BY & DATE JKOH	APPROVED BY & DATE CWLEE	<input checked="" type="checkbox"/>	CAD FILENAME SD35021LDGN	MATERIAL NO. SEE TABLE	DRAWING NO. SD-35021-002	SHEET NO. 1 OF 1 SIZE B

LEAD FREE

THIS DRAWING CONTAINS INFORMATION THAT IS PROPRIETARY TO MOLEX INCORPORATED AND SHOULD NOT BE USED WITHOUT WRITTEN PERMISSION.

MX-A3