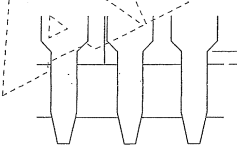
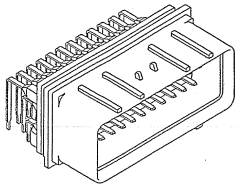
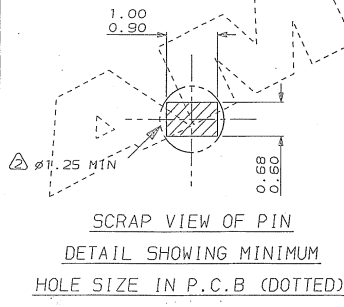


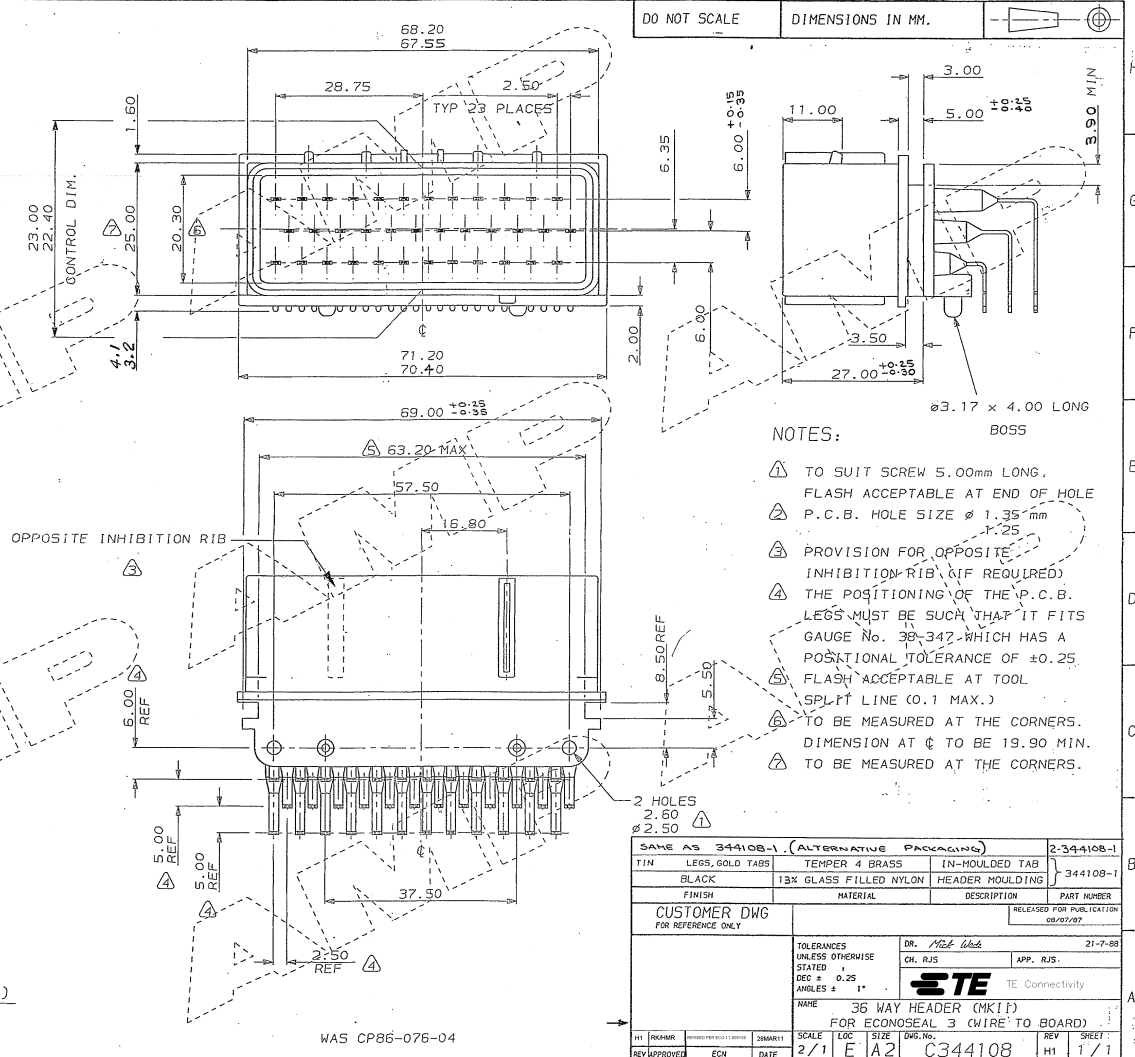
PLATE FILE CODE  
S. C344108.



SCRAP VIEW OF PINS  
SCALE 5:1



SCRAP VIEW OF PIN  
DETAIL SHOWING MINIMUM  
HOLE SIZE IN P.C.B. (DOTTED)



DO NOT SCALE DIMENSIONS IN MM.

- NOTES:
- △ TO SUIT SCREW 5.00mm LONG. FLASH ACCEPTABLE AT END OF HOLE
  - △ P.C.B. HOLE SIZE  $\phi$  1.35 mm
  - △ PROVISION FOR OPPOSITE INHIBITION RIB (IF REQUIRED)
  - △ THE POSITIONING OF THE P.C.B. LEGS MUST BE SUCH THAT IT FITS GAUGE No. 36-347 WHICH HAS A POSITIONAL TOLERANCE OF  $\pm 0.25$  FLASH ACCEPTABLE AT TOOL SPLIT LINE (0.1 MAX.)
  - △ TO BE MEASURED AT THE CORNERS. DIMENSION AT  $\phi$  TO BE 19.90 MIN.
  - △ TO BE MEASURED AT THE CORNERS.

SAME AS 344108-1 (ALTERNATIVE PACKAGING)		2-344108-1	
TIN	LEGS, GOLD TABS	TEMPER 4 BRASS	IN-MOULD TAB
BLACK	13% GLASS FILLED NYLON	HEADER MouldING	344108-1
FINISH	MATERIAL	DESCRIPTION	PART NUMBER
CUSTOMER DWG FOR REFERENCE ONLY			RELEASED FOR PUBLICATION 28/01/97
TOLERANCES UNLESS OTHERWISE STATED DEC = 0.25 ANGLES = 1°		DR. <i>Nick Wick</i>	21-7-88
		CH. RJS	APP. RJS.
<b>STE</b> TE Connectivity			
NAME: 36 WAY HEADER (MK11) FOR ECONOSEAL 3 (WIRE TO BOARD)			
H1	DESIGNED	DATE	SCALE
REV	APPROVED	DATE	1/1
	ECN		2/1 E A2
			C344108
			H1 1/1

WAS CP86-076-04

0-01TF-9/19/03 8:14:42 AM