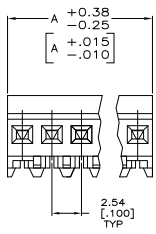
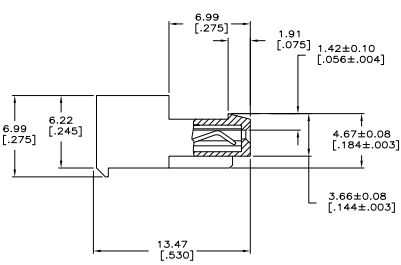
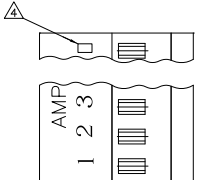


1. MATERIAL: CONNECTOR-NYLON UL94V-2 (WHITE).  
 CONTACTS-0.30 [.012] THICK COPPER ALLOY  
 BRIGHT TIN-LEAD 0.00203 [.000080] MINIMUM THICK FOR CONTACTS  
 641535-2 THRU 641535-6,  
 MATTE WHISKER MITIGATED TIN PLATE 0.00203 [.000080] MINIMUM THICK OVER  
 NICKEL UNDERPLATE FOR CONTACTS 3-641535-2 THRU 3-641535-6.
2. CONTACTS ACCEPT 24 AWG WIRE WITH 1.52 [.060] MAXIMUM INSULATION DIAMETER.
3. CONTACTS MUST ACCEPT 0.36-0.51 [.014-.020] SQUARE OR ROUND POST AND REMAINED LOCKED IN POSITION.
4. IDENTIFICATION NUMBER FOR LAST CIRCUIT MAY NOT APPEAR ON ALL ASSEMBLIES.
5. DIMENSIONS IN BRACKETS ARE IN INCHES.
6. HOUSING FEATURES ARE: CLOSED END WITH LOCKING RAMP & LED CONTACT.
- OBsolete PARTS: OBSOLETE CIS STREAMLINING PER D.RENAUD/D.SINISI



LEAD FREE	15.24	[.600]	6	3-641535-6
	12.70	[.500]	5	3-641535-5
	7.62	[.300]	3	3-641535-3
	5.08	[.200]	2	3-641535-2
	DIM A		NO.OF POSN	ASSEMBLY

CONTAINS LEAD	15.24	[.600]	6	641535-6
	12.70	[.500]	5	641535-5
	7.62	[.300]	3	641535-3
	5.08	[.200]	2	641535-2
	DIM A		NO.OF POSN	ASSEMBLY

~~△ SUPERSEDED~~  
~~△ SUPERSEDED~~



THIS DRAWING IS A CONTROLLED DOCUMENT.

DESIGNER: J. HOOVER 10-001-0001  
 CHECKED: J. BOSSI 10-001-0001  
 DATE: 108-1050  
 OPERATOR: JPC  
 114-1019

TE Connectivity  
 MTA-100 CONNECTOR ASSEMBLY,  
 24 AWG, FOR .014 TO .020 POST, SPECIAL

SIZE: A1 DATE REVISION: 00779 DRAWING NO: 641535  
 CUSTOMER DRAWING

SCALE: 5:1 SHEET: 1 OF 1 REV: N2