

4

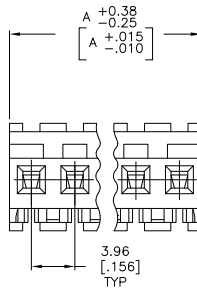
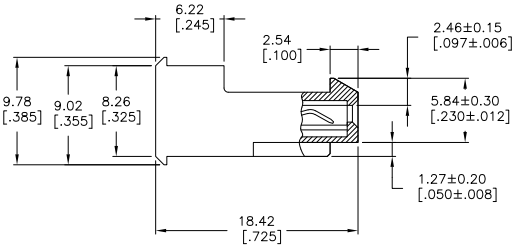
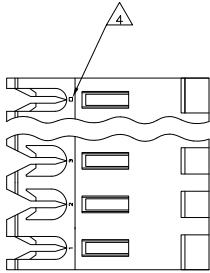
3

2

1

THIS DRAWING IS UNPUBLISHED. RELEASED FOR PUBLICATION. ALL RIGHTS RESERVED.

LOC	DIST	REVISIONS					
CM	54	F	LWR	DESCRIPTION	DATE	BY	APPD
		T2		REVISED PER ECO-11-004820	11MAR11	RK	HMR



1 MATERIAL: CONNECTOR - NYLON UL94V-2 (RED).
 CONTACTS - 0.30[.012] THICK COPPER ALLOY BRIGHT TIN-LEAD 0.00203[.000080] MIN THICK FOR CONTACTS 640601-2 THRU 2-640601-4 MATTE WHISKER MITIGATED TIN 0.00203[.000080] MIN THICKNESS OVER NICKEL UNDERPLATE FOR 3-640601-2 THRU 5-640601-4

- 2. CONTACTS ACCEPT 22 AWG WIRE WITH 2.41[.095] MAX INSULATION DIAMETER.
- 3. CONTACTS MUST ACCEPT 1.14±0.03[.045±.001] SQUARE POST AND REMAIN LOCKED IN POSITION.
- 4 IDENTIFICATION NUMBER FOR LAST CIRCUIT MAY NOT APPEAR ON ALL ASSEMBLIES.
- 5. DIMENSIONS IN BRACKETS ARE IN INCHES.

- 6. HOUSING FEATURES ARE: FEED-THRU WITH LOCKING RAMP.
- 7 OBSOLETE PARTS: OBSOLETE CIS STREAMLINING PER D.RENAUD/D.SINISI



95.10	[3.744]	24	5-640601-4
91.14	[3.588]	23	5-640601-3
87.17	[3.432]	22	5-640601-2
83.21	[3.276]	21	5-640601-1
79.25	[3.120]	20	5-640601-0
75.29	[2.964]	19	4-640601-9
71.32	[2.808]	18	4-640601-8
67.36	[2.652]	17	4-640601-7
63.40	[2.496]	16	4-640601-6
59.44	[2.340]	15	4-640601-5
55.47	[2.184]	14	4-640601-4
51.51	[2.028]	13	4-640601-3
47.55	[1.872]	12	4-640601-2
43.59	[1.716]	11	4-640601-1
39.62	[1.560]	10	4-640601-0
35.66	[1.404]	9	3-640601-9
31.70	[1.248]	8	3-640601-8
27.74	[1.092]	7	3-640601-7
23.77	[.936]	6	3-640601-6
19.81	[.780]	5	3-640601-5
15.85	[.624]	4	3-640601-4
11.89	[.468]	3	3-640601-3
7.92	[.312]	2	3-640601-2
95.10	[3.744]	24	2-640601-4
91.14	[3.588]	23	2-640601-3
87.17	[3.432]	22	2-640601-2
83.21	[3.276]	21	2-640601-1
79.25	[3.120]	20	2-640601-0
75.29	[2.964]	19	1-640601-9
71.32	[2.808]	18	1-640601-8
67.36	[2.652]	17	1-640601-7
63.40	[2.496]	16	1-640601-6
59.44	[2.340]	15	1-640601-5
55.47	[2.184]	14	1-640601-4
51.51	[2.028]	13	1-640601-3
47.55	[1.872]	12	1-640601-2
43.59	[1.716]	11	1-640601-1
39.62	[1.560]	10	1-640601-0
35.66	[1.404]	9	640601-9
31.70	[1.248]	8	640601-8
27.74	[1.092]	7	640601-7
23.77	[.936]	6	640601-6
19.81	[.780]	5	640601-5
15.85	[.624]	4	640601-4
11.89	[.468]	3	640601-3
7.92	[.312]	2	640601-2
DIM A		NO OF CIRCUITS	PART NO

SUPERSEDED
 (triangle symbol)

SUPERSEDED
 (triangle symbol)

(triangle symbol) SUPERSEDED

THIS DRAWING IS A CONTROLLED DOCUMENT.

DIM	DL LEWIS	12 FEB 91
CHK	R SWING	12 FEB 91
APPD	D. CLARK	19 FEB 91
PRODUCT SPEC	108-1051	
APPLICATION SPEC	114-1020	
WEIGHT	-	

MATERIAL: (triangle symbol)

FINISH: (triangle symbol)

TE Connectivity
 MTA-156 CONNECTOR ASSEMBLY,
 22 AWG, STANDARD

SIZE: 00779 C=640601
 SCALE: 4:1 SHEET: 1 of 1 REV: T2