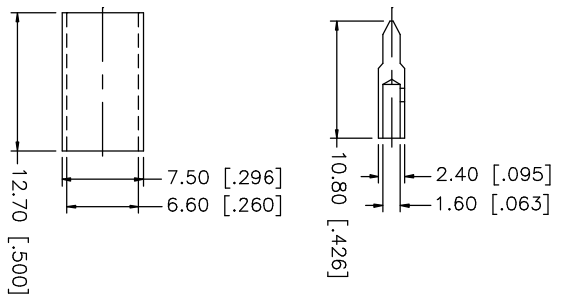
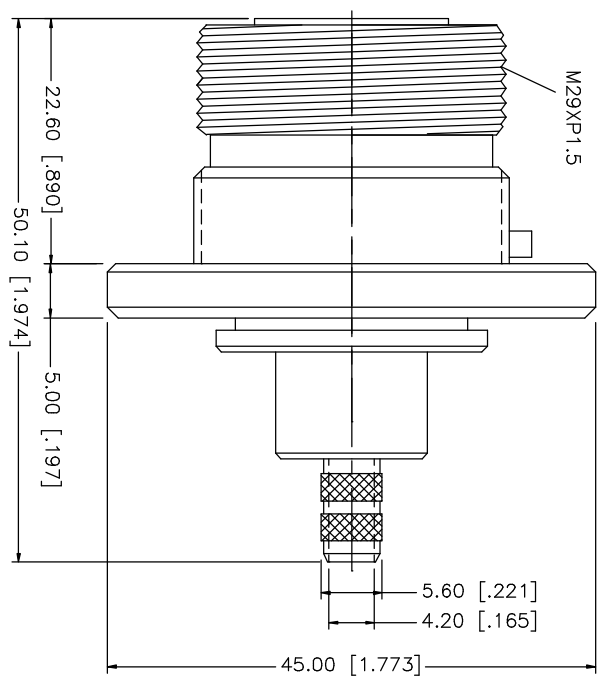
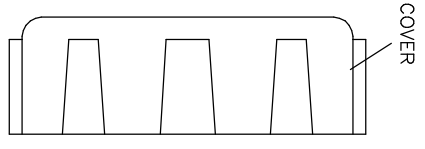
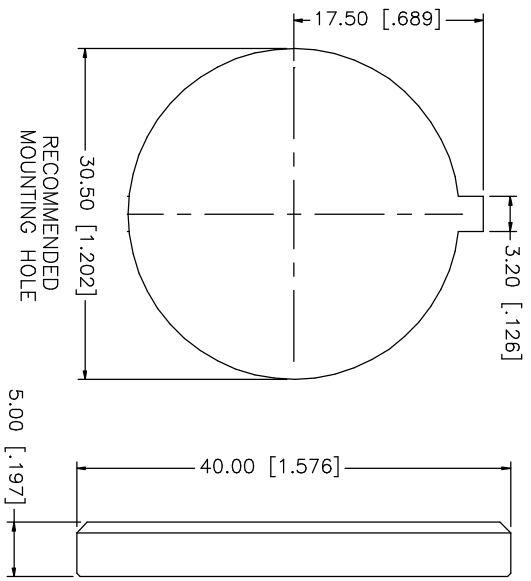
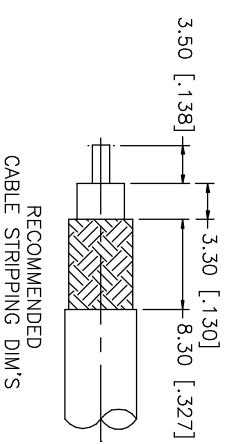


REV.	DATE	DESCRIPTION
NC	06/11/03	INITIAL RELEASE



NOTE:
 1. CRIMPED FERRULE
 HEX CRIMP SIZE .255"
 2. CRIMPED CONTACT PIN
 HEX CRIMP SIZE .068"
 OR CONTACT PIN TO SOLDER

8	7	6	5	4	3	2	1												
	SPANNER NUT	BRASS	SILVER																
	FERRULE	COPPER	SILVER																
	COVER	P.E.	BLUE																
	GASKET	N.B.R.	BLACK																
	CONTACT PIN	BER. COPPER	GOLD																
	INSULATOR	TEFLON	NATURAL																
	BODY	BRASS	SILVER																
	DESCRIPTION	MATERIAL	FINISH	QTY															
UNLESS OTHERWISE SPECIFIED DIMENSIONS ARE IN MILLIMETERS. DIMENSIONS IN [] ARE IN INCHES AND FOR CUSTOMER REFERENCE ONLY. TOLERANCES FOR MILLIMETERS ARE: 0.5 - 8mm ± 0.20mm 8 - 30mm ± 0.40mm 30 - 120mm ± 0.50mm UNLESS OTHERWISE SPECIFIED TOLERANCES FOR INCHES ARE: .020 - .315 = ± 0.007" .315 - 1.180 = ± 0.015" 1.180 - 4.724 = ± 0.020"										DO NOT SCALE DRAWING									
CAD FILE					C:/272/272185.DWG					DWG. NO. 272185.DWG					REV. NC SIZE A SCALE NA				
APPROVALS										DATE									
DRAWN G.R.S.										06/11/03									
CHECKED																			
ISSUED																			
SHEET 1 OF 1																			
PART DESCRIPTION										PART NO. 272185									
7/16 BULKHEAD CRIMP JACK										(FOR RG-8/X, LMR-240 CABLE)									
Amphenol Connex																			