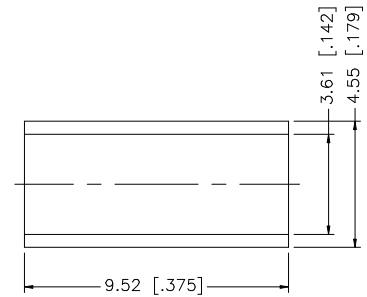
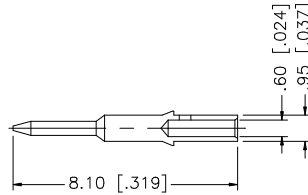
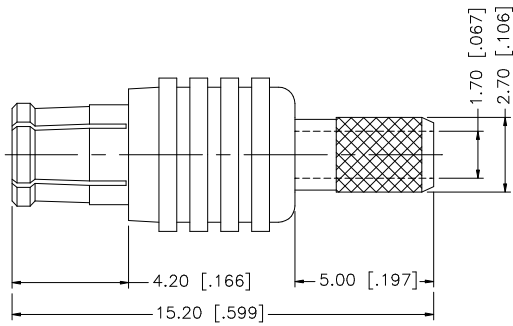
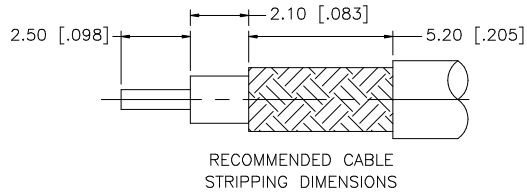


REV.	DATE	DESCRIPTION
A	11/31/01	MODIFY CONTACT PIN
B	10/31/05	UPDATE DRAWING FORMAT, MODIFY CRIMP NOTES
C	02/15/07	REVISE CONTACT PIN AND FERRULE DIMENSIONS



NOTE:

1. CRIMPED FERRULE HEX CRIMP SIZE .151"
2. CRIMPED CONTACT PIN SQ. CRIMP SIZE 0.7(mm)

DESCRIPTION	MATERIAL	FINISH	QTY	UNLESS OTHERWISE SPECIFIED DIMENSIONS ARE IN MILLIMETERS DIMENSIONS IN [ ] ARE IN INCHES AND FOR CUSTOMER REFERENCE ONLY.	APPROVALS	DATE	Amphenol Connex			
8							<b>MCX STRAIGHT CRIMP PLUG – GOLD</b> (FOR RG-3179/U DOUBLE BRAID)			
7										
6										
5	FERRULE	COPPER	GOLD	1						
4	CONTACT PIN	BRASS	GOLD	1						
3	INSULATOR	TEFLON	NATURAL	2						
2	BODY	BER. COPPER	GOLD	1			PART NO. 252121-75			
1	HOUSING	BRASS	GOLD	1			DWG. NO. 252121-75.DWG			
				DO NOT SCALE DRAWING	CAD FILE	C:/252/252121-75.DWG	REV. C	SIZE A	SCALE NA	