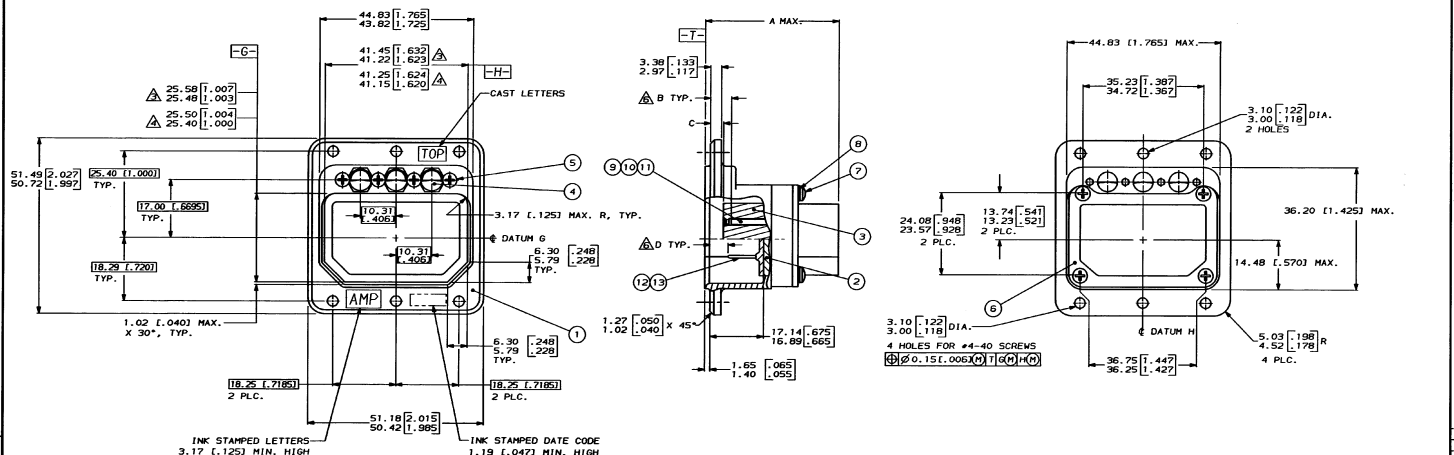
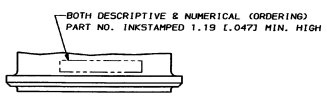


THIS DRAWING IS UNPUBLISHED. RELEASED FOR PUBLICATION  
 COPYRIGHT © 1989 BY AMP INCORPORATED, CANTON, MASS., ALL INTERNATIONAL RIGHTS RESERVED. AMP PRODUCTS MAY BE COVERED BY U.S. AND FOREIGN PATENTS AND/OR PATENTS PENDING.



- CONTACTS SHOWN LOADED FOR ILLUSTRATION ONLY, ARE INCLUDED IN A CONTAINER WITHIN CONNECTOR PACKAGE FOR SHIPMENT.
- FOR INSERT ARRANGEMENTS AND DIMENSIONS, SEE TABLES ON SHEET 2 OF 2.
- DIMENSION TAKEN AT 7.67/7.57 (.302/.298) FROM TOP EDGE.
- DIMENSION TAKEN AT 1.32/1.22 (.052/.048) FROM BOTTOM OF CAVITY.
- DIMENSIONS IN BRACKETS ARE IN INCHES.
- FOR CONTACT SIZE #22, DIMENSION "B" REPRESENTS PIN CONTACTS AND DIMENSION "D" REPRESENTS SOCKET CONTACTS.

**METRIC**

UNLESS OTHERWISE SPECIFIED DIMENSIONS ARE IN INCHES	DATE: 3-11-89	PART NO.
REFERENCES ON: M. HOFFECKER	DESIGNED BY: M. HOFFECKER	AMP INCORPORATED
3 PL. SEC. ± .005	CHECKED BY: L. LAWVER	NEW HAVEN, CT 07108
ANGLES: ± 0°30'	APPROVED BY: E. HOWARD	NAME: RECEPTACLE CONN. KIT,
MATERIAL: SEE TABLE	DATE: 3-12-89	ARINC 404, SINGLE INSERT,
FINISH: SEE TABLE	PRODUCT SPEC: D. SMITH	RM1R SERIES
SHT. 2 OF 2	APPLICATION SPEC:	SIZE: F500 NO. 00779
WEIGHT:	SCALE: 2:1	DRAWING NO. 213436
		SHEET 1 OF 2

CUSTOMER DRAWING

DRAWING MADE IN THIRD ANGLE PROJECTION  
 THIS DRAWING IS UNPUBLISHED. RELEASED FOR PUBLICATION  
 © COPYRIGHT 1988 BY AMP INCORPORATED, MARIETTA, GA. ALL INTERNATIONAL RIGHTS RESERVED. AMP PRODUCTS MAY BE COVERED BY U.S. AND FOREIGN PATENTS AND/OR PATENT PENDING.

REV	DATE	DESCRIPTION	APPRO
1		SEE SHEET 1	

REV	DATE	DESCRIPTION	APPRO
01	01 (2001)	CUSTOMER ORDERING CODE, SEE DRAWING 205102	
01	01 (2000)	KEYING CODE, SEE DRAWING 204014	
00	00 (2000)	MODIFICATION CODE, SEE DRAWING 205100	
00	01 (2001)	INSERT	
00	01 (2002)		
106P			
67P			
67P			
40C1S			
33C4P			
DBS			
4	4	CLINCH NUT - STEEL, PL CADMIUM	18
---	---	WASHER - STAINLESS STEEL, PASSIVATED	17
---	---	ALIGNMENT BUSHING - STAINLESS STEEL, PASSIVATED	16
1	1	INSERT/EXTRACT TOOL, SIZE 20 - ACETAL/BE CU, PL NICKEL	15
1	1	INSERT/EXTRACT TOOL, SIZE 16 - ACETAL/BE CU, PL NICKEL	14
64	64	204939-3 PIN CONT, SIZE 20 - LEADED COPPER, PL GOLD OVER NICKEL	13
3	3	204978-3 PIN CONT, SIZE 16 - LEADED COPPER, PL GOLD OVER NICKEL	12
---	---	205116-1 SKT CONT ASSY, SIZE 20 - LEADED COPPER, PL GOLD OVER NICKEL	11
---	---	205117-1 SKT CONT ASSY, SIZE 16 - LEADED COPPER, PL GOLD OVER NICKEL	10
---	---	205951-2 SKT CONT ASSY, SIZE 12 - LEADED COPPER, PL GOLD OVER NICKEL	9
4	4	LOCKWASHER - STAINLESS STEEL, PASSIVATED	8
4	4	MACHINE SCREW - STAINLESS STEEL, PASSIVATED	7
1	1	RETAINER PLATE - ALUMINUM, ANODIZED BLUE	6
4	4	FLATHEAD SCREW - STAINLESS STEEL, PASSIVATED	5
3	3	KEYING INSERT - ALUMINUM, PL CADMIUM, YELLOW CHROMATE	4
---	---	SOCKET INSERT ASSEMBLY - EPOXY, BLACK	3
1	1	PIN INSERT ASSEMBLY - EPOXY, BLACK	2
1	1	SHELL - ALUMINUM, PL CADMIUM, YELLOW CHROMATE	1

B DIM.			C DIM.			D DIM.		
CONTACT SIZE			CONTACT SIZE			CONTACT SIZE		
22	16	12	22	16	12	22	16	12
4.32	3.21	3.21	4.44	2.06	2.06	8.35	8.79	4.19
2.92	3.71	3.71	3.48	1.22	1.22	1.22	5.21	2.64
[.170]	[.205]	[.205]	[.175]	[.081]	[.081]	[.001]	[.250]	[.348]
[.115]	[.148]	[.148]	[.137]	[.048]	[.048]	[.048]	[.205]	[.104]

A DIM.	INSERT ARRANGEMENT													
	C2	C3	B	GB	DB	26	32C2	33C4	40	40C1	45	57	67	106
					33.35				38.74				33.35	27.33
					[1.313]				[1.525]				[1.313]	[1.078]



UNLESS OTHERWISE SPECIFIED DIMENSIONS ARE IN MM TOLERANCES ON: 3 PL DEC: --- 5 PL DEC: --- ANGLES: --- MATERIAL: SEE TABLE FINISH: SEE TABLE	DR. M. HOFFECKER 3-11-89 CHK. LAMVER 3-11-89 APPR. E. HOWARD 3-11-89 D. SMITH 3-12-89 PRODUCT SPEC	AMP INCORPORATED Marietta, Ga. 30136 NAME: RECEPTACLE CONN. KIT, ARINC 404, SINGLE INSERT, RMIR SERIES SIZE: D PCHG NO: 00779 DRAWING NO: 213436 SCALE: --- SHEET 2 OF 2
---	--	---

CUSTOMER DRAWING