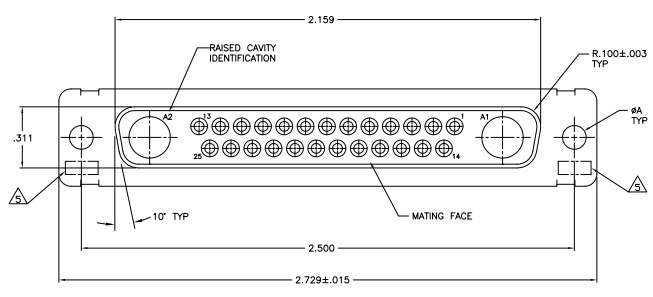
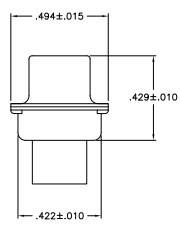
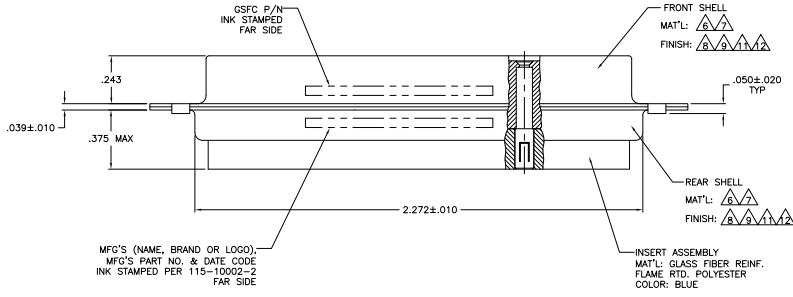


THIS DRAWING IS UNPUBLISHED. RECEIVED FOR INFORMATION. ALL RIGHTS RESERVED.

REV	DATE	DESCRIPTION	BY	CHKD
DF	DO			
K		REVISED PER ECO-10-011807		



- THIS RECEPTACLE WILL MATE WITH ANY 27C2, SIZE 4 PLUG IN AMPLIMITE SERIES.
 - MAXIMUM WIRE INSULATION TO BE USED WITH THIS RECEPTACLE IS #.068.
 - THIS CONNECTOR ACCEPTS (2) POWER 8, OR COAX SOCKET CONTACTS IN POSITIONS A1 THRU A2, PURCHASED SEPARATELY.
 - THIS CONNECTOR ACCEPTS SIZE 20 SOCKET SIGNAL CONTACTS IN POSITIONS 1 THRU 25, PURCHASED SEPARATELY.
- ▲ UL/CSA DESIGNATION STAMPED IN THIS AREA, OPTIONAL.
 ▲ STEEL PER ASTM-A-109.
 ▲ BRASS PER MIL-C-50 AND ASTM-B-36 UNS NO. C26000.
 ▲ FINISH: CADMIUM PLATED PER QQ-P-416.
 ▲ GOLD PLATED PER MIL-G-45204 TYPE II, GRADE C, CLASS 1 OVER COPPER PER MIL-C-14550, CLASS IV.
 ▲ FINISH: TIN PER ASTM-B-545 .000200 MIN THK OVER COPPER PER AMS2418 .000100-.000200 THK.
 ▲ FINISH: TIN PER ASTM-B-545 .000200 MIN THK OVER COPPER PER AMS2418 .000100-.000200 THK.
 ▲ FINISH: ZINC PLATE PER ASTM-B-633 .000200-.000400 THK WITH SUPPLEMENTARY CHROMATE (Cr3+).



▲	.120	-	5-212542-4
▲	.120	-	5-212542-1
▲	.120	-	212542-4
▲	.154	311P405-21S-B-15	212542-3
▲	.120	311P405-21S-B-12	212542-2
▲	.120	-	212542-1

THIS DRAWING IS A CONTROLLED DOCUMENT.		REV	DATE	DESCRIPTION	BY	CHKD
REVISED	DATE	DESCRIPTION	BY	CHKD	DATE	DESCRIPTION
1	00779	Q=212542				

Tels Electronics Corporation
 Harrisburg, PA 17105-3608
 RECEPTACLE ASSEMBLY
 AMPLIMITE 27C2
 SIZE 4, SERIES 109, COAX MIX
 SIZE DATE SIZE DRAWING NO. 1 00779 Q=212542
 CUSTOMER DRAWING