



Copyright FCI



FCIconnect.com



1 | 2

3 |

4

PRODUCT NUMBER  
20020003-XXXXXXLF

20020003-□ □ □ □ □ ○ □ LF

PITCH  
G: 5.00mm  
H: 5.08mm

POLES  
02: 2 POLES  
03: 3 POLES  
04: 4 POLES  
24: 24 POLES

LF : DENOTED RoHS COMPATIBLE

1 : STANDARD PRODUCT  
W/ BOX PACKING

SCREW CODE

CODE	SCREW TYPE	AVAILABILITY
A	-/+	ON REQUEST ONLY
B	-	STANDARD

ALL FLANGE SCREWS ARE ONLY AVAILABLE IN +/- COMBINATION SCREW TYPES.

PROPERTY TABLE			
FCI SERIES NAME		01-500	01-508
PITCH (mm)		5.00	5.08
VOLTAGE RATING (VAC)		300	300
CURRENT RATING (A)		12	12
APPLICABLE WIRE RANGE (AWG)		1-WIRE 12~24 2-WIRE 18	12~24 18
WIRE CROSS SECTION (mm <sup>2</sup> )	SOLID	1-WIRE 2.5 2-WIRE 1.0	2.5 1.0
	STRANDED	1-WIRE 2.5 2-WIRE 1.5	2.5 1.5
OPENING CONTACT HOUSING(mm <sup>2</sup> )		2.6x3.2	2.6x3.2
WIRE STRIP LENGTH(mm)		7~8	7~8
TORQUE +/-10% (N-m/Lb-in)		0.57/5.0	0.57/5.0
SCREW		M3x0.5	M3x0.5
WITHSTANDING VOLTAGE (kV)		1.6	1.6
OPERATING TEMP. (°C)		-40~+115	-40~+115
POLES AVAILABLE		02~24	02~24
SAFETY CERTIFICATE			

HOUSING CODE

CODE	COLOR	AVAILABILITY
1	GREEN(RAL 6018/T)	STANDARD
2	BLACK	ON REQUEST ONLY
3	GREY(RAL 7004/P)	ON REQUEST ONLY
4	BLUE(RAL 5015/A)	ON REQUEST ONLY

NOTES:

- MATERIALS
  - 1-1 HOUSING: THERMALPLASTIC RESIN, UL 94V-0 RATED.
  - 1-2 SCREW AND FLANGE SCREW: STEEL, ZINC PLATED.
  - 1-3 CLAMP: COPPER ALLOY, NICKEL PLATED.
  - 1-4 TERMINAL: COPPER ALLOY, TIN PLATED.
- PRODUCT SPECIFICATION REFER TO FCI GS-12-625.
- BOXED PACKAGING, DETAILED PRODUCT PACKING SPECIFICATION REFER TO FCI GS-14-1394.
- FCI, SAFETY CERTIFICATE LOGO AND SERIES NAME TO BE SHOWN ON PRODUCT SURFACE.
- THE PRODUCTS WHERE THE PART NUMBER END IN "LF" MEET THE EUROPEAN UNION DIRECTIVE AND OTHER COUNTRY REGULATIONS AS DESCRIBED IN GS-22-008.

mat'l. code	surface ASME Y14.5	tolerance ASME Y14.5	projection	product family
ltr	ecn no	dr	date	tolerances unless otherwise specified
A	T10-0062	WL	050710	angles $\frac{B}{E}$ X.±0.5
B	T10-0127	WL	080910	X.X±0.3
C	T10-0155	WL	093010	X'±1" X.XX±0.1
D	T10-0187	WL	121410	dr WENDY CHEN 042310
				enrg JASON HSU 042310
				chr GARY HSIEH 042310
				appd JOSEPH HSIA 042310
sheet index	revision sheet	D 1	D 2	D 3



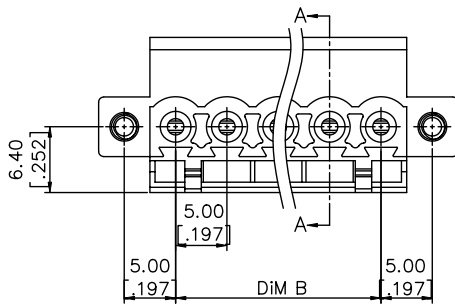
form: A4mmXLc

1 |

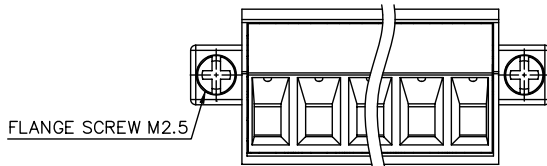
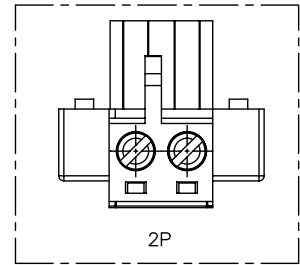
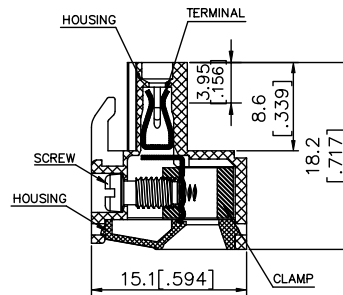
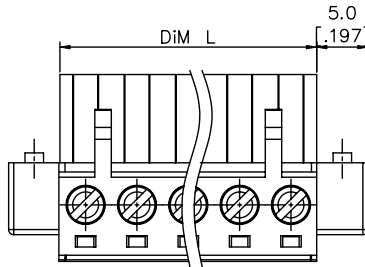
2 |

PDM: Rev:D 3 | STATUS:Released Printed: Dec 22, 2010 4

PRODUCT NUMBER	SERIES NAME	PITCH
20020003-GXXXXXL	01-500	5.00 mm

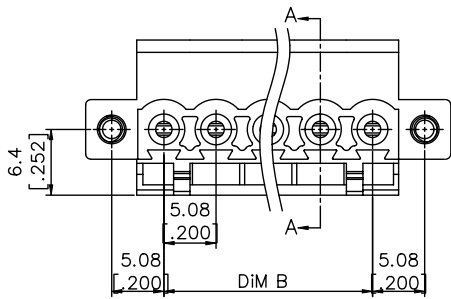


Poles	02	03	04	05	06	07	08	09	10	11	12	13
Dim L	10.00 [.394]	15.00 [.591]	20.00 [.787]	25.00 [.984]	30.00 [1.181]	35.00 [1.378]	40.00 [1.575]	45.00 [1.772]	50.00 [1.969]	55.00 [2.165]	60.00 [2.362]	65.00 [2.559]
Dim B	5.00 [.197]	10.00 [.394]	15.00 [.591]	20.00 [.787]	25.00 [.984]	30.00 [1.181]	35.00 [1.378]	40.00 [1.575]	45.00 [1.772]	50.00 [1.969]	55.00 [2.165]	60.00 [2.362]
TOL	±0.15 [.006]			±0.20 [.008]			±0.25 [.010]					
Poles	14	15	16	17	18	19	20	21	22	23	24	
Dim L	70.00 [2.756]	75.00 [2.953]	80.00 [3.150]	85.00 [3.346]	90.00 [3.543]	95.00 [3.740]	100.00 [3.937]	105.00 [4.134]	110.00 [4.330]	115.00 [4.528]	120.00 [4.724]	
Dim B	65.00 [.559]	70.00 [2.756]	75.00 [2.953]	80.00 [3.150]	85.00 [3.346]	90.00 [3.543]	95.00 [3.740]	100.00 [3.937]	105.00 [4.134]	110.00 [4.330]	115.00 [4.528]	
TOL	±0.25 [.010]		±0.30 [.012]				±0.40 [.016]					



mat'l. code	surface ASME Y14.5 ✓ ASME Y14.5	tolerance ASME Y14.5	projection MM INCH	product family TERMINAL BLOCK	
ltr	ecn	no	dr	date	title TERMINAL BLOCK PLUGGABLE, PLUG, SIGNAL, W/FLANGE CONTACT UP SIDE
D	tolerances unless otherwise specified				dwg no 20020003
	angles X±0.5 X.X±0.3 X'±1"	MM INCH	scale	sheet 2 of 3	size A4
	dr WENDY CHEN	042310		type CUSTOMER Drawing	
	enr JASON HSU	042310			
	chr GARY HSIEH	042310			
	appd JOSEPH HSIA	042310			
sheet index	revision sheet				

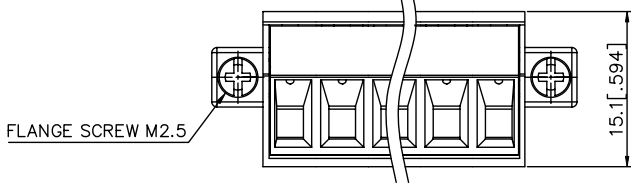
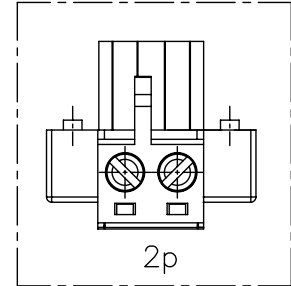
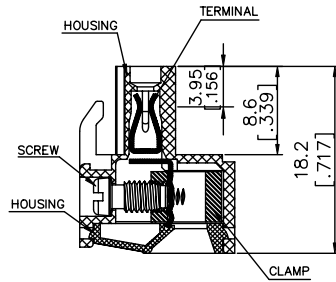
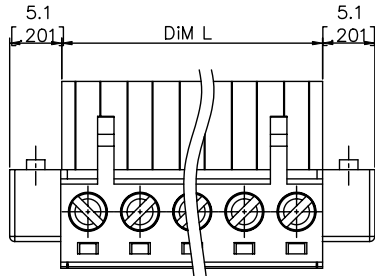
PRODUCT NUMBER	SERIES NAME	PITCH
20020003-HXXXXXL	01-508	5.08 mm



Poles	02	03	04	05	06	07	08	09	10	11	12	13
Dim L	10.16 [0.400]	15.24 [0.600]	20.32 [0.800]	25.40 [1.000]	30.48 [1.200]	35.56 [1.400]	40.64 [1.600]	45.72 [1.800]	50.80 [2.000]	55.88 [2.200]	60.96 [2.400]	66.04 [2.600]
Dim B	5.08 [0.200]	10.16 [0.400]	15.24 [0.600]	20.32 [0.800]	25.40 [1.000]	30.48 [1.200]	35.56 [1.400]	40.64 [1.600]	45.72 [1.800]	50.80 [2.000]	55.88 [2.200]	60.96 [2.400]
TOL	±0.15 [0.006]				±0.20 [0.008]				±0.25 [0.010]			

Poles	14	15	16	17	18	19	20	21	22	23	24	
Dim L	71.12 [2.800]	76.20 [3.000]	81.28 [3.200]	86.36 [3.400]	91.44 [3.600]	96.52 [3.800]	101.60 [4.000]	106.68 [4.200]	111.76 [4.400]	116.84 [4.600]	121.92 [4.800]	
Dim B	66.04 [2.600]	71.12 [2.800]	76.20 [3.000]	81.28 [3.200]	86.36 [3.400]	91.44 [3.600]	96.52 [3.800]	101.60 [4.000]	106.68 [4.200]	111.76 [4.400]	116.84 [4.600]	
TOL	±0.25 [0.010]			±0.30 [0.012]			±0.40 [0.016]					



mat'l. code	surface ASME Y14.5	tolerance ASME Y14.5	projection	product family
ltr ecn no dr date	tolerances unless otherwise specified		MM [INCH]	TERMINAL BLOCK
D	angles	X.±0.5	scale	title
	X'±1"	X.X±0.3		TERMINAL BLOCK PLUGGABLE, PLUG, SIGNAL, W/FLANGE CONTACT UP SIDE
	dr WENDY CHEN	042310		dwg no 20020003
	enr JASON HSU	042310		sheet 3 of 3
	chr GARY HSIEH	042310		size A4
	appd JOSEPH HSIA	042310		type CUSTOMER Drawing
sheet index	revision sheet			