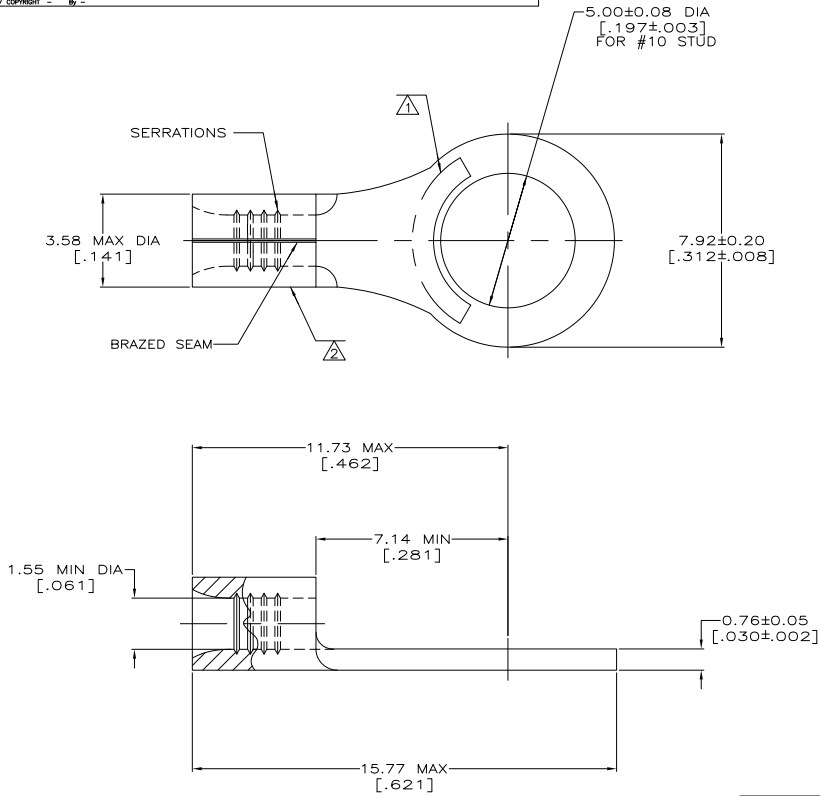


THE DRAWING IS UNPUBLISHED. RELEASED FOR PUBLICATION. ALL RIGHTS RESERVED.

LOC	REV	DESCRIPTION	DATE	BY	APP
G	14				
	F2	REVISED PER ECO-12-003796	27FEB12	KH	DR



AMP
WIRE RANGE
22-16 AWG
SOLID OR STRANDED

- 1 STAMP AMP 22-18 APPROX AS SHOWN
22-16 TERMINALS ARE STAMPED 22-18 IN
ACCORDANCE WITH MILITARY SPEC SAE AS7928
COMMERCIAL WIRE RANGE IS 22-16
- 2 WIRE BARREL COLOR CODED ORANGE
TO DENOTE NICKEL MATERIAL
- 3 GOLD PLATE 0.00127[.000050]MIN EXT.
THK PER ASTM B488 TYPE 1, CODE C OVER
NICKEL FLASH PER SAE AMS QQ-N-290
OVER WOODS NICKEL FLASH PER ASTM B558.
- 4 NOTE DELETED

OBSOLETE	TEMP	FINISH	QTY	PACKAGE TYPE	PART NO
	649°C [1200°F]	—	5000	ON TAPE	2-321896-4
	260°C [500°F]	3	1000	LOOSE PIECE	321896-1
3	649°C [1200°F]	—	1000	LOOSE PIECE	321896
	MAX OPERATING TEMP	FINISH	QTY	PACKAGE TYPE	PART NO

AMP INCORPORATED CUSTOMER SERVICE SYSTEMS		MAX RECOMMENDED OPERATING TEMPERATURE: SEE TABLE
FOR ADDITIONAL PRODUCT INFORMATION OR COPIES OF DRAWINGS AND TECHNICAL DOCUMENTS	PRODUCT INFORMATION CENTER 1-800-522-6752	VOLTAGE RATING: NOT APPLICABLE
FOR APPLICATION TOOLING INFORMATION	TOOLING ASSISTANCE CENTER 1-800-722-1111	WIRE CROSS SECTIONAL AREA RANGE: 0.26-1.65mm ² [509-3,260] CIR MILS SOLID OR STRANDED
FOR ORDER ENTRY	1-800-526-5142	THIS DRAWING IS A CONTROLLED DOCUMENT FOR AMP INCORPORATED. IT IS SUBJECT TO CHANGE AND THE CONTROLLING ENGINEERING ORGANIZATION SHOULD BE CONTACTED FOR THE LATEST REVISION.

THIS DRAWING IS A CONTROLLED DOCUMENT.		BY TA BRINKMAN 4-15-83	DATE 4-15-83	APPROVED DA PATTERSON 4-15-83	BY DE MILLER 4-15-83	DATE 4-15-83	SCALE 10:1	SHEET 1 of 1	REV F2
DIMENSIONS: mm [INCHES]	TOLERANCES UNLESS OTHERWISE SPECIFIED:	MATERIAL NICKEL PER ASTM B-162 ANNEALED		FINISH SEE TABLE		WEIGHT —		DRAWING NO A2 00779 © 321896	
TERMINALS UNLESS OTHERWISE SPECIFIED:		PRODUCT SPEC		APPLICATION SPEC		SIZE A2		CAGE CODE 00779	
0 P/C ± .001		1 P/C ± .001		2 P/C ± .001		3 P/C ± .001		4 P/C ± .001	
5 P/C ± .001		6 P/C ± .001		7 P/C ± .001		8 P/C ± .001		9 P/C ± .001	
10 P/C ± .001		11 P/C ± .001		12 P/C ± .001		13 P/C ± .001		14 P/C ± .001	
15 P/C ± .001		16 P/C ± .001		17 P/C ± .001		18 P/C ± .001		19 P/C ± .001	
20 P/C ± .001		21 P/C ± .001		22 P/C ± .001		23 P/C ± .001		24 P/C ± .001	
25 P/C ± .001		26 P/C ± .001		27 P/C ± .001		28 P/C ± .001		29 P/C ± .001	
30 P/C ± .001		31 P/C ± .001		32 P/C ± .001		33 P/C ± .001		34 P/C ± .001	
35 P/C ± .001		36 P/C ± .001		37 P/C ± .001		38 P/C ± .001		39 P/C ± .001	
40 P/C ± .001		41 P/C ± .001		42 P/C ± .001		43 P/C ± .001		44 P/C ± .001	
45 P/C ± .001		46 P/C ± .001		47 P/C ± .001		48 P/C ± .001		49 P/C ± .001	
50 P/C ± .001		51 P/C ± .001		52 P/C ± .001		53 P/C ± .001		54 P/C ± .001	
55 P/C ± .001		56 P/C ± .001		57 P/C ± .001		58 P/C ± .001		59 P/C ± .001	
60 P/C ± .001		61 P/C ± .001		62 P/C ± .001		63 P/C ± .001		64 P/C ± .001	
65 P/C ± .001		66 P/C ± .001		67 P/C ± .001		68 P/C ± .001		69 P/C ± .001	
70 P/C ± .001		71 P/C ± .001		72 P/C ± .001		73 P/C ± .001		74 P/C ± .001	
75 P/C ± .001		76 P/C ± .001		77 P/C ± .001		78 P/C ± .001		79 P/C ± .001	
80 P/C ± .001		81 P/C ± .001		82 P/C ± .001		83 P/C ± .001		84 P/C ± .001	
85 P/C ± .001		86 P/C ± .001		87 P/C ± .001		88 P/C ± .001		89 P/C ± .001	
90 P/C ± .001		91 P/C ± .001		92 P/C ± .001		93 P/C ± .001		94 P/C ± .001	
95 P/C ± .001		96 P/C ± .001		97 P/C ± .001		98 P/C ± .001		99 P/C ± .001	
100 P/C ± .001		101 P/C ± .001		102 P/C ± .001		103 P/C ± .001		104 P/C ± .001	
105 P/C ± .001		106 P/C ± .001		107 P/C ± .001		108 P/C ± .001		109 P/C ± .001	
110 P/C ± .001		111 P/C ± .001		112 P/C ± .001		113 P/C ± .001		114 P/C ± .001	
115 P/C ± .001		116 P/C ± .001		117 P/C ± .001		118 P/C ± .001		119 P/C ± .001	
120 P/C ± .001		121 P/C ± .001		122 P/C ± .001		123 P/C ± .001		124 P/C ± .001	
125 P/C ± .001		126 P/C ± .001		127 P/C ± .001		128 P/C ± .001		129 P/C ± .001	
130 P/C ± .001		131 P/C ± .001		132 P/C ± .001		133 P/C ± .001		134 P/C ± .001	
135 P/C ± .001		136 P/C ± .001		137 P/C ± .001		138 P/C ± .001		139 P/C ± .001	
140 P/C ± .001		141 P/C ± .001		142 P/C ± .001		143 P/C ± .001		144 P/C ± .001	
145 P/C ± .001		146 P/C ± .001		147 P/C ± .001		148 P/C ± .001		149 P/C ± .001	
150 P/C ± .001		151 P/C ± .001		152 P/C ± .001		153 P/C ± .001		154 P/C ± .001	
155 P/C ± .001		156 P/C ± .001		157 P/C ± .001		158 P/C ± .001		159 P/C ± .001	
160 P/C ± .001		161 P/C ± .001		162 P/C ± .001		163 P/C ± .001		164 P/C ± .001	
165 P/C ± .001		166 P/C ± .001		167 P/C ± .001		168 P/C ± .001		169 P/C ± .001	
170 P/C ± .001		171 P/C ± .001		172 P/C ± .001		173 P/C ± .001		174 P/C ± .001	
175 P/C ± .001		176 P/C ± .001		177 P/C ± .001		178 P/C ± .001		179 P/C ± .001	
180 P/C ± .001		181 P/C ± .001		182 P/C ± .001		183 P/C ± .001		184 P/C ± .001	
185 P/C ± .001		186 P/C ± .001		187 P/C ± .001		188 P/C ± .001		189 P/C ± .001	
190 P/C ± .001		191 P/C ± .001		192 P/C ± .001		193 P/C ± .001		194 P/C ± .001	
195 P/C ± .001		196 P/C ± .001		197 P/C ± .001		198 P/C ± .001		199 P/C ± .001	
200 P/C ± .001		201 P/C ± .001		202 P/C ± .001		203 P/C ± .001		204 P/C ± .001	
205 P/C ± .001		206 P/C ± .001		207 P/C ± .001		208 P/C ± .001		209 P/C ± .001	
210 P/C ± .001		211 P/C ± .001		212 P/C ± .001		213 P/C ± .001		214 P/C ± .001	
215 P/C ± .001		216 P/C ± .001		217 P/C ± .001		218 P/C ± .001		219 P/C ± .001	
220 P/C ± .001		221 P/C ± .001		222 P/C ± .001		223 P/C ± .001		224 P/C ± .001	
225 P/C ± .001		226 P/C ± .001		227 P/C ± .001		228 P/C ± .001		229 P/C ± .001	
230 P/C ± .001		231 P/C ± .001		232 P/C ± .001		233 P/C ± .001		234 P/C ± .001	
235 P/C ± .001		236 P/C ± .001		237 P/C ± .001		238 P/C ± .001		239 P/C ± .001	
240 P/C ± .001		241 P/C ± .001		242 P/C ± .001		243 P/C ± .001		244 P/C ± .001	
245 P/C ± .001		246 P/C ± .001		247 P/C ± .001		248 P/C ± .001		249 P/C ± .001	
250 P/C ± .001		251 P/C ± .001		252 P/C ± .001		253 P/C ± .001		254 P/C ± .001	
255 P/C ± .001		256 P/C ± .001		257 P/C ± .001		258 P/C ± .001		259 P/C ± .001	
260 P/C ± .001		261 P/C ± .001		262 P/C ± .001		263 P/C ± .001		264 P/C ± .001	
265 P/C ± .001		266 P/C ± .001		267 P/C ± .001		268 P/C ± .001		269 P/C ± .001	
270 P/C ± .001		271 P/C ± .001		272 P/C ± .001		273 P/C ± .001		274 P/C ± .001	
275 P/C ± .001		276 P/C ± .001		277 P/C ± .001		278 P/C ± .001		279 P/C ± .001	
280 P/C ± .001		281 P/C ± .001		282 P/C ± .001		283 P/C ± .001		284 P/C ± .001	
285 P/C ± .001		286 P/C ± .001		287 P/C ± .001		288 P/C ± .001		289 P/C ± .001	
290 P/C ± .001		291 P/C ± .001		292 P/C ± .001		293 P/C ± .001		294 P/C ± .001	
295 P/C ± .001		296 P/C ± .001		297 P/C ± .001		298 P/C ± .001		299 P/C ± .001	
300 P/C ± .001		301 P/C ± .001		302 P/C ± .001		303 P/C ± .001		304 P/C ± .001	
305 P/C ± .001		306 P/C ± .001		307 P/C ± .001		308 P/C ± .001		309 P/C ± .001	
310 P/C ± .001		311 P/C ± .001		312 P/C ± .001		313 P/C ± .001		314 P/C ± .001	
315 P/C ± .001		316 P/C ± .001		317 P/C ± .001		318 P/C ± .001		319 P/C ± .001	
320 P/C ± .001		321 P/C ± .001		322 P/C ± .001		323 P/C ± .001		324 P/C ± .001	
325 P/C ± .001		326 P/C ± .001		327 P/C ± .001		328 P/C ± .001		329 P/C ± .001	
330 P/C ± .001		331 P/C ± .001		332 P/C ± .001		333 P/C ± .001		334 P/C ± .001	
335 P/C ± .001		336 P/C ± .001		337 P/C ± .001		338 P/C ± .001		339 P/C ± .001	
340 P/C ± .001		341 P/C ± .001		342 P/C ± .001		343 P/C ± .001		344 P/C ± .001	
345 P/C ± .001		346 P/C ± .001		347 P/C ± .001		348 P/C ± .001		349 P/C ± .001	
350 P/C ± .001		351 P/C ± .001		352 P/C ± .001		353 P/C ± .001		354 P/C ± .001	
355 P/C ± .001		356 P/C ± .001		357 P/C ± .001		358 P/C ± .001		359 P/C ± .001	
360 P/C ± .001		361 P/C ± .001		362 P/C ± .001		363 P/C ± .001		364 P/C ± .001	
365 P/C ± .001		366 P/C ± .001		367 P/C ± .001		368 P/C ± .001		369 P/C ± .001	
370 P/C ± .001		371 P/C ± .001		372 P/C ± .001		373 P/C ± .001		374 P/C ± .001	
375 P/C ± .001		376 P/C ± .001		377 P/C ± .001		378 P/C ± .001		379 P/C ± .001	
380 P/C ± .001		381 P/C ± .001		382 P/C ± .001		383 P/C ± .001		384 P/C ± .001	
385 P/C ± .001		386 P/C ± .001		387 P/C ± .001		388 P/C ± .001		389 P/C ± .001	
390 P/C ± .001		391 P/C ± .001		392 P/C ± .001		393 P/C ± .001		394 P/C ± .001	
395 P/C ± .001		396 P/C ± .001		397 P/C ± .001		398 P/C ± .001		399 P/C ± .001	
400 P/C ± .001		401 P/C ± .001		402 P/C ± .001		403 P/C ± .001		404 P/C ± .001	
405 P/C ± .001		406 P/C ± .001		407 P/C ± .001		408 P/C ± .001		409 P/C ± .001	
410 P/C ± .001		411 P/C ± .001		412 P/C ± .001		413 P/C ± .001		414 P/C ± .001	
415 P/C ± .001		416 P/C ± .001		417 P/C ± .001		418 P/C ± .001		419 P/C ± .001	
420 P/C ± .001		421 P/C ± .001		422 P/C ± .001		423 P/C ± .001		424 P/C ± .001	
425 P/C ± .001		426 P/C ± .001		427 P/C ± .001		428 P/C ± .001		429 P/C ± .001	
430 P/C ± .001		431 P/C ± .001		432 P/C ± .001		433 P/C ± .001		434 P/C ± .001	
435 P/C ± .001		436 P/C ± .001		437 P/C ± .001		438 P/C ± .001		439 P/C ± .001	
440 P/C ± .001		441 P/C ± .001		442 P/C ± .001		443 P/C ± .001		444 P/C ± .001	
445 P/C ± .001		446 P/C ± .001		447 P/C ± .001		448 P/C ± .001		449 P/C ± .001	
450 P/C ± .001		451 P/C ± .001		452 P/C ± .001		453 P/C ± .001		454 P/C ± .001	
455 P/C ± .001		456 P/C ± .001		457 P/C ± .001		458 P/C ± .001		459 P/C ± .001	
460 P/C ± .001		461 P/C ± .001		462 P/C ± .001		463 P/C ± .001		464 P/C ± .001	
465 P/C ± .001		466 P/C ± .001		467 P/C ± .001		468 P/C ± .001		469 P/C ± .001	
470 P/C ± .001		471 P/C ± .001		472 P/C ± .001		473 P/C ± .001		474 P/C ± .001	
475 P/C ± .001		476 P/C ± .001		477 P/C ± .001		478 P/C ± .001		479 P/C ± .001	
480 P/C ± .001		481 P/C ± .001		482 P/C ± .001		483 P/C ± .001		484 P/C ± .001	
485 P/C ± .001		486 P/C ± .001		487 P/C ± .001		488 P/C ± .001		489 P/C ± .001	
490 P/C ± .001		491 P/C ± .001		492 P/C ± .001		493 P/C ± .001		494 P/C ± .001	
495 P/C ± .001		496 P/C ± .001		497 P/C ± .001		498 P/C ± .001		499 P/C ± .001	
500 P/C ± .001		501 P/C ± .001		502 P/C ± .001		503 P/C ± .001		504 P/C ± .001	
505 P/C ± .001		506 P/C ± .001		507 P/C ± .001		508 P/C ± .001		509 P/C ± .001	
510 P/C ± .001		511 P/C ± .001		512 P/C ± .001		513 P/C ± .001		514 P/C ± .001	
515 P/C ± .001		516 P/C ± .001		517 P/C ± .001		518 P/C ± .001		519 P/C ± .001	