

MICRO SWITCH

A DIVISION OF MINNEAPOLIS-HONEYWELL REGULATOR COMPANY

EMERSON, ILLINOIS

FED. MFR. CODE 91929

SWITCH - BASIC

SKETCH 15259
ISSUE 1

REPLACES

RELEASE NO. SR 6804

ISEI-T

DRAWING NUMBER

2

ISSUE

4

REVISIONS

A	CO-13435
23	OMW MAR 59
B	CO-18028
14	MBF MAY 63
C	CO-34213
J	A L
24	SEPT 74

CHECK

3 AUG 59

CNT 2

CHECK

12 AUG 59

CHECK

57

1 AUG

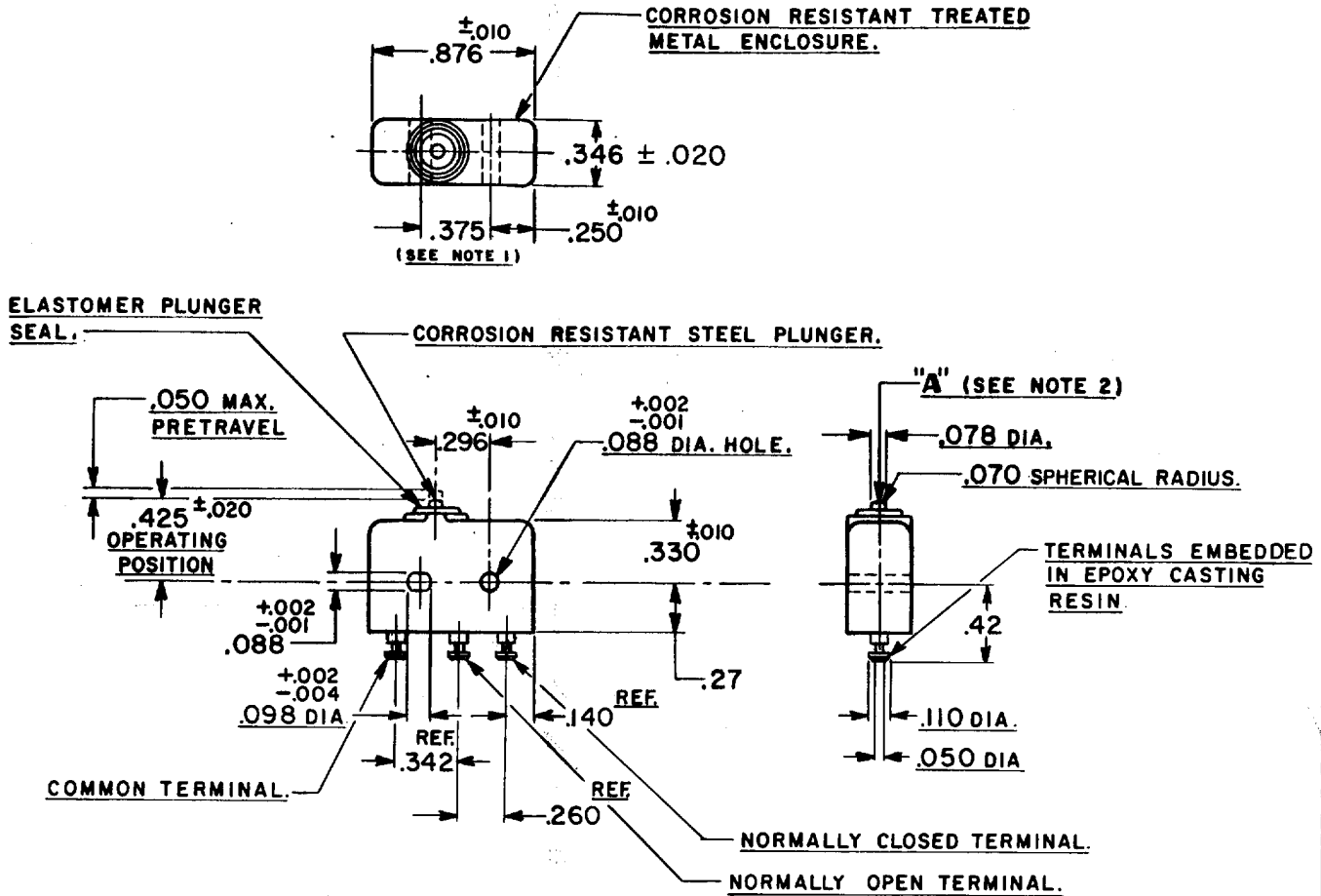
R. E. R.

DRAWN

ELASTOMER PLUNGER SEAL.

CORROSION RESISTANT STEEL PLUNGER.

CORROSION RESISTANT TREATED METAL ENCLOSURE.



NOTE -

- 1-MOUNTING HOLES WILL ACCEPT .087 MAX. DIA. PINS OR SCREWS ON $.375 \pm .002$ CENTERS.
- 2-ACTUATION IN LINE WITH ARROW "A" IS RECOMMENDED.

THIS DRAWING COVERS A PROPRIETARY ITEM AND IS THE PROPERTY OF MICRO SWITCH, A DIVISION OF HONEYWELL. THIS DRAWING IS NOT TO BE COPIED OR USED WITHOUT THE APPROVAL OF MICRO SWITCH.

CHARACTERISTICS

OPERATING FORCE	5-17 OZ.
RELEASE FORCE	-4 OZ. MIN.
RELEASE TRAVEL	.004 MIN.
DIFFERENTIAL TRAVEL	.004 MAX
OVERTRAVEL	.003 MIN.

ELECTRICAL DATA

CONTACT ARRANGEMENT		S. P. D. T.	
250 VAC		5 AMP	
30 VOLTS DC RATING			
INDUCTIVE	SEA LEVEL	3 AMP	
	50,000 FT.	2.5 AMP	
RESISTIVE	SEA LEVEL	5 AMP	
	50,000 FT.	5 AMP	
(A) MAXIMUM INRUSH		24 AMP	

SCALE - FULL

DO NOT SCALE PRINT

UNLESS OTHERWISE SPECIFIED
DIMENSIONS ARE IN INCHES
TOLERANCES ARE:

ONE PLACE (.0)	$\pm .030$
TWO PLACE (.00)	$\pm .015$
THREE PLACE (.000)	$\pm .008$
ANGLES	\pm

WEIGHT .26 OZ MAX (B)