

CATALOG LISTING

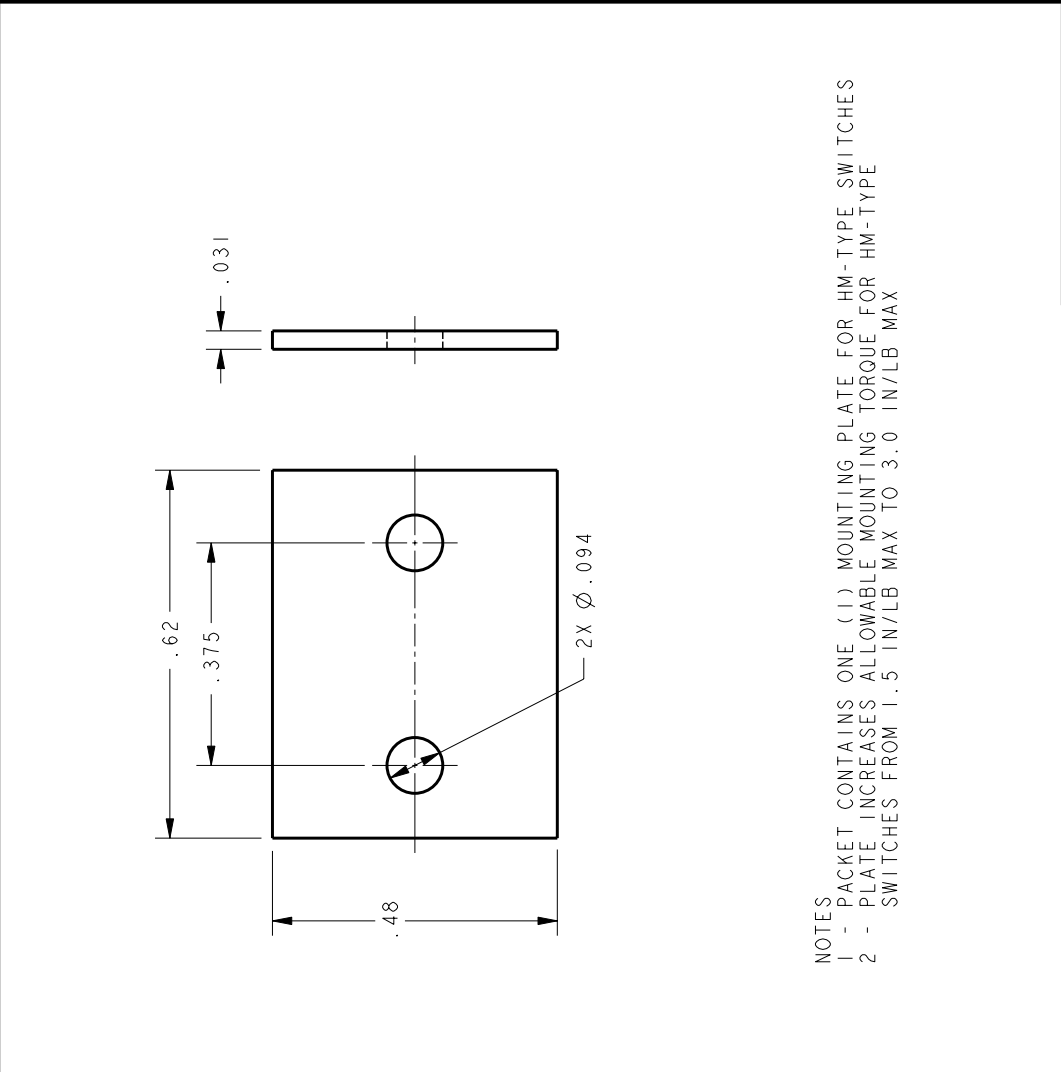
19PA137-HM

PACKET

MICRO SWITCH
a Honeywell Division

FED. MFG. CODE 91929

THIS DRAWING COVERS A PROPRIETARY ITEM AND IS THE PROPERTY OF MICRO SWITCH, A DIVISION OF HONEYWELL. THIS DRAWING IS NOT TO BE COPIED OR USED WITHOUT THE APPROVAL OF MICRO SWITCH.



NOTES
 1 - PACKET CONTAINS ONE (1) MOUNTING PLATE FOR HM-TYPE SWITCHES
 2 - PLATE INCREASES ALLOWABLE MOUNTING TORQUE FOR HM-TYPE SWITCHES FROM 1.5 IN/LB MAX TO 3.0 IN/LB MAX

THIRD ANGLE PROJECTION	
SCALE	4 : 1
DO NOT SCALE PRINT	
UNLESS OTHERWISE SPECIFIED TOLERANCES ARE	
ONE PLACE (.0)	± .030
TWO PLACE (.00)	± .015
THREE PLACE (.000)	± .005
ANGLES	±
WEIGHT	1.4 GRAMS MAX

CATALOG LISTING	19PA137-HM	PAGE 1 OF 1	RELEASE NO. PR-15860	REPLACES
ISSUE	2	CHECK	CHECK	CHECK
REV. NO.	REV. DATE	REV. BY	REV. DESCRIPTION	REV. CHECK
1	095534	J A F	24 AUG 99	J A F
2	99	J A F	24 AUG 99	J A F
3	99	J A F	24 AUG 99	J A F
4	99	J A F	24 AUG 99	J A F
5	99	J A F	24 AUG 99	J A F
6	99	J A F	24 AUG 99	J A F
7	99	J A F	24 AUG 99	J A F
8	99	J A F	24 AUG 99	J A F
9	99	J A F	24 AUG 99	J A F
10	99	J A F	24 AUG 99	J A F
11	99	J A F	24 AUG 99	J A F
12	99	J A F	24 AUG 99	J A F
13	99	J A F	24 AUG 99	J A F
14	99	J A F	24 AUG 99	J A F
15	99	J A F	24 AUG 99	J A F
16	99	J A F	24 AUG 99	J A F
17	99	J A F	24 AUG 99	J A F
18	99	J A F	24 AUG 99	J A F
19	99	J A F	24 AUG 99	J A F
20	99	J A F	24 AUG 99	J A F
21	99	J A F	24 AUG 99	J A F
22	99	J A F	24 AUG 99	J A F
23	99	J A F	24 AUG 99	J A F
24	99	J A F	24 AUG 99	J A F
25	99	J A F	24 AUG 99	J A F
26	99	J A F	24 AUG 99	J A F
27	99	J A F	24 AUG 99	J A F
28	99	J A F	24 AUG 99	J A F
29	99	J A F	24 AUG 99	J A F
30	99	J A F	24 AUG 99	J A F
31	99	J A F	24 AUG 99	J A F
32	99	J A F	24 AUG 99	J A F
33	99	J A F	24 AUG 99	J A F
34	99	J A F	24 AUG 99	J A F
35	99	J A F	24 AUG 99	J A F
36	99	J A F	24 AUG 99	J A F
37	99	J A F	24 AUG 99	J A F
38	99	J A F	24 AUG 99	J A F
39	99	J A F	24 AUG 99	J A F
40	99	J A F	24 AUG 99	J A F
41	99	J A F	24 AUG 99	J A F
42	99	J A F	24 AUG 99	J A F
43	99	J A F	24 AUG 99	J A F
44	99	J A F	24 AUG 99	J A F
45	99	J A F	24 AUG 99	J A F
46	99	J A F	24 AUG 99	J A F
47	99	J A F	24 AUG 99	J A F
48	99	J A F	24 AUG 99	J A F
49	99	J A F	24 AUG 99	J A F
50	99	J A F	24 AUG 99	J A F
51	99	J A F	24 AUG 99	J A F
52	99	J A F	24 AUG 99	J A F
53	99	J A F	24 AUG 99	J A F
54	99	J A F	24 AUG 99	J A F
55	99	J A F	24 AUG 99	J A F
56	99	J A F	24 AUG 99	J A F
57	99	J A F	24 AUG 99	J A F
58	99	J A F	24 AUG 99	J A F
59	99	J A F	24 AUG 99	J A F
60	99	J A F	24 AUG 99	J A F
61	99	J A F	24 AUG 99	J A F
62	99	J A F	24 AUG 99	J A F
63	99	J A F	24 AUG 99	J A F
64	99	J A F	24 AUG 99	J A F
65	99	J A F	24 AUG 99	J A F
66	99	J A F	24 AUG 99	J A F
67	99	J A F	24 AUG 99	J A F
68	99	J A F	24 AUG 99	J A F
69	99	J A F	24 AUG 99	J A F
70	99	J A F	24 AUG 99	J A F
71	99	J A F	24 AUG 99	J A F
72	99	J A F	24 AUG 99	J A F
73	99	J A F	24 AUG 99	J A F
74	99	J A F	24 AUG 99	J A F
75	99	J A F	24 AUG 99	J A F
76	99	J A F	24 AUG 99	J A F
77	99	J A F	24 AUG 99	J A F
78	99	J A F	24 AUG 99	J A F
79	99	J A F	24 AUG 99	J A F
80	99	J A F	24 AUG 99	J A F
81	99	J A F	24 AUG 99	J A F
82	99	J A F	24 AUG 99	J A F
83	99	J A F	24 AUG 99	J A F
84	99	J A F	24 AUG 99	J A F
85	99	J A F	24 AUG 99	J A F
86	99	J A F	24 AUG 99	J A F
87	99	J A F	24 AUG 99	J A F
88	99	J A F	24 AUG 99	J A F
89	99	J A F	24 AUG 99	J A F
90	99	J A F	24 AUG 99	J A F
91	99	J A F	24 AUG 99	J A F
92	99	J A F	24 AUG 99	J A F
93	99	J A F	24 AUG 99	J A F
94	99	J A F	24 AUG 99	J A F
95	99	J A F	24 AUG 99	J A F
96	99	J A F	24 AUG 99	J A F
97	99	J A F	24 AUG 99	J A F
98	99	J A F	24 AUG 99	J A F
99	99	J A F	24 AUG 99	J A F
100	99	J A F	24 AUG 99	J A F

ANSI Y14.5M-1982 APPLIES