

PRODUCT NUMBER
SEE SHEET 7

TECHNICAL SPECIFICATIONS

BODY CARRIED PIN

PARAMETER	SPECIFICATION
CONTACT: BASE METAL	COPPER-NICKEL-TIN ALLOY(C72500)
FINISHES: CONTACT SURFACES:	
-GXT	30u" MIN Au FLASHED-PD Ni ON Ni
-GOLD	40u" MIN Au ON Ni
NXT	6u" MIN Au ON 50u" MIN Ni Alloy
NICKEL	50u" MIN Ni Alloy
COMPLIANT SECTION	SOLDER ELECTROPLATE
DIMENSIONS	0.025 in square (crowned)
RECOMMENDED PLATED THROUGH HOLES SIZE	0.041 in. +0.003 in ./-0.002 in
INSERTION FORCE	45 lb. (maximum)
RETENTION FORCE	9 lb.(minimum)
OPERATING TEMPERATURE	-55°C to +85° C
CENTER SPACING	0.125 in.
LUBRICATION	polyphenylether

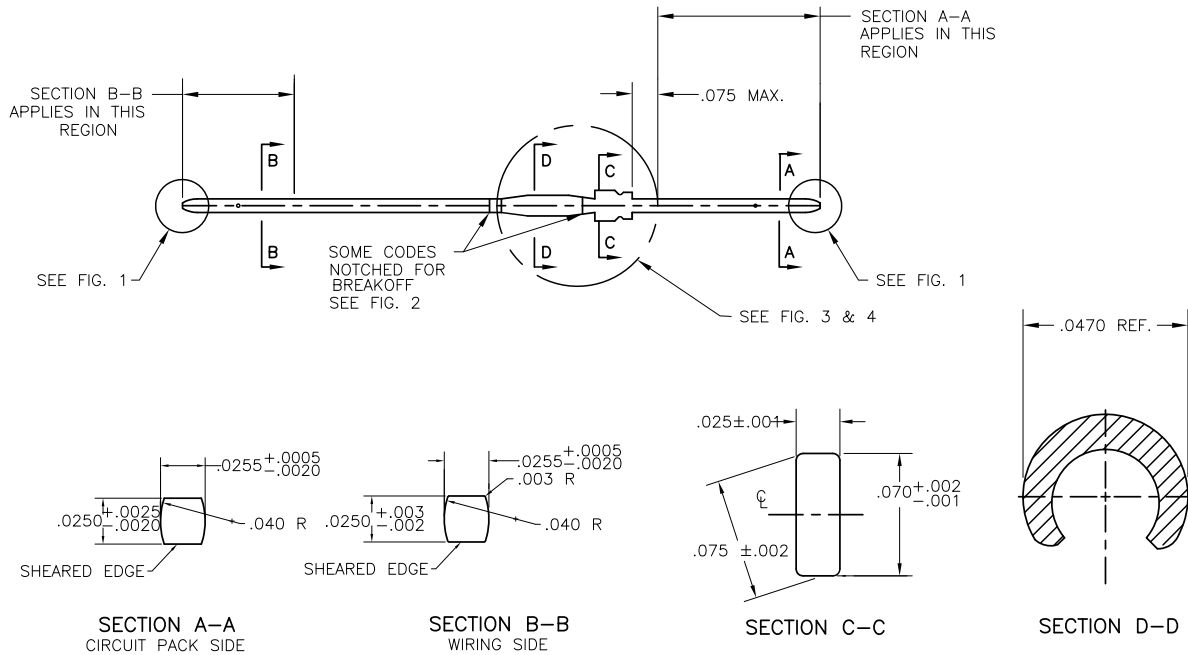
NOT AVAILABLE
NOT AVAILABLE

mat'l. code	SEE TABLE	surface	tolerance	projection	product family
ASME Y14.5	ASME Y14.5	ASME Y14.5	ASME Y14.5		FASTECH
tolerances unless otherwise specified	angles	INCH	scale N.T.S.	title	
				1 TYPE CONTACT	
dr	T. BREWBAKER	2003-03-11		dwg no	sheet 2 of 7
engr	T. BREWBAKER	2003-03-11		A93KC4040	A4
chr	T. BREWBAKER	2003-03-11		type	
appd	T. BREWBAKER	2003-03-11		CUSTOMER Drawing	
sheet index	revision sheet				

PRODUCT NUMBER
SEE SHEET 7

WIRING SIDE

CIRCUIT PACK SIDE



mat'l code	SEE TABLE	surface	tolerance	projection	product family
lfr	ecn no	dr	date	ASME Y14.5 ✓ ASME Y14.5	FASTECH
M				tolerances unless otherwise specified	title
				angles	1 TYPE CONTACT
				fillets	
				INCH	
				scale N.T.S.	
		dr	T. BREWBAKER	2003-03-11	dwg no
		engr	T. BREWBAKER	2003-03-11	sheet 3 of 7
		chr	T. BREWBAKER	2003-03-11	size
		appd	T. BREWBAKER	2003-03-11	A93KC4040
sheet index	revision sheet				type
					CUSTOMER Drawing

PRODUCT NUMBER
SEE SHEET 7

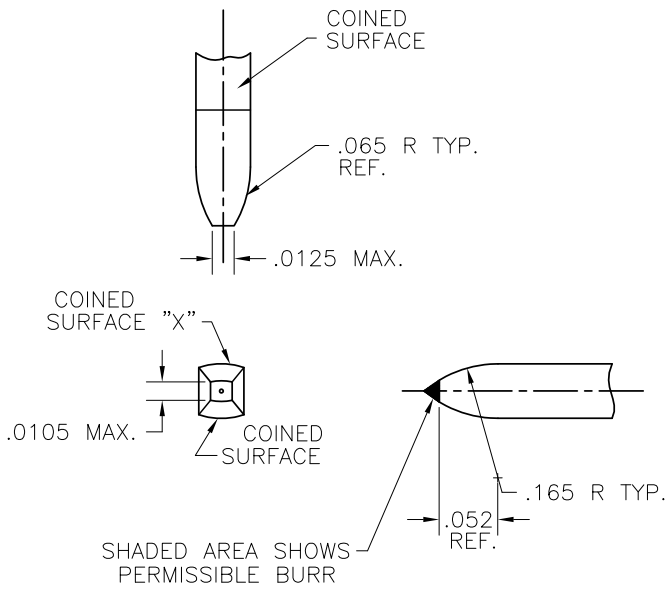


FIG. 1
BODY CARRIED TIP
CONFIGURATION

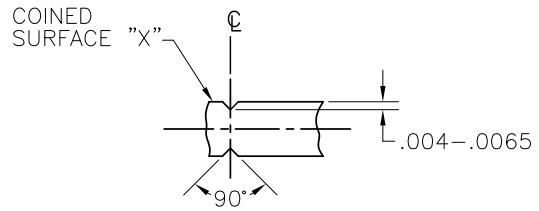
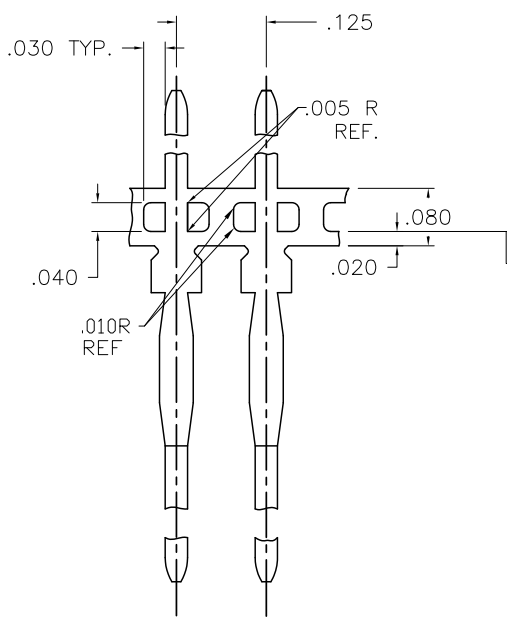


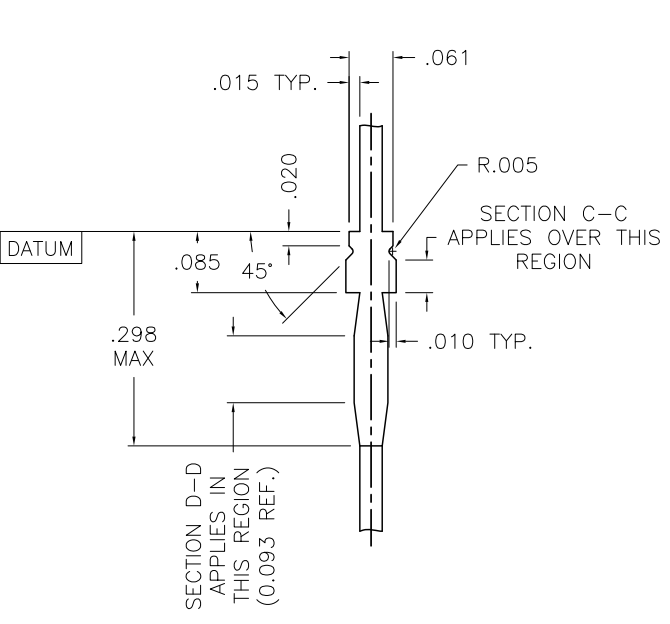
FIG. 2
NOTCH

mat'l. code		surface		tolerance		projection		product family		
SEE TABLE		ASME Y14.5 ✓		ASME Y14.5				FASTECH		
lfr	ec'n no	dr	date	tolerances unless otherwise specified		INCH		title		
M				angles	fin	←		1 TYPE CONTACT		
						scale N.T.S.				
		dr	T. BREWBAKER	2003-03-11				dwg no	sheet 4 of 7	size
		engr	T. BREWBAKER	2003-03-11				A93KC4040	A4	
		chr	T. BREWBAKER	2003-03-11						
		appd	T. BREWBAKER	2003-03-11						
sheet	revision									
index	sheet									

PRODUCT NUMBER
SEE SHEET 7



BODY CARRIED PIN
WITH CARRIER
FIG. 3



AFTER CARRIER REMOVAL
FIG. 4

mat'l code		SEE TABLE		surface	tolerance	projection	product family
				ASME Y14.5 ✓	ASME Y14.5		FASTECH
tr	ec'n no	dr	date	tolerances unless otherwise specified		INCH	title
M				angles		←	1 TYPE CONTACT
						scale N.T.S.	
		dr	T. BREWBAKER	2003-03-11			
		engr	T. BREWBAKER	2003-03-11			
		chr	T. BREWBAKER	2003-03-11			
		appd	T. BREWBAKER	2003-03-11			
sheet index	revision sheet					dwg no	sheet 5 of 7 size
						A93KC4040	A4
						type	CUSTOMER Drawing

PRODUCT NUMBER
SEE SHEET 7

FCJ 1-TYPE PIN PART NUMBER DESCRIPTIONS

TYPE	STYLE	PLATING (See Plating Notes- Sheet 2)	Carrier
1B (Standard)	- 1 thru 34	None = GXT NOT AVAILABLE G = Gold NOT AVAILABLE A = NXT	NONE = Body Carried Carrier SG = single pin (No carrier)
1C (Plated Shoulder)	- 1 thru 6	G = Gold	NONE = Body Carried SG = single pin (No carrier)
1D (Circuit Pack Side Breakoff)	- 1 thru 4	None = GXT NOT AVAILABLE G = Gold NOT AVAILABLE A = NXT	NONE = Body Carried Carrier SG = single pin (No carrier)
1E (Torlon Bushing)	- 1 thru 5	O B S O L E T E	
Example: 1B-4GSG = 1B-4, Gold plated, Single Pin			

mat'l. code	SEE TABLE	surface	tolerance	projection	product family
lfr	ec'n no	dr	date	ASME Y14.5 ✓ ASME Y14.5	FASTECH
M				tolerances unless otherwise specified	title
				angles	1 TYPE CONTACT
				finishes	
				INCH	
				scale N.T.S.	
		dr	T. BREWBAKER	2003-03-11	dwg no
		engr	T. BREWBAKER	2003-03-11	sheet 6 of 7
		chr	T. BREWBAKER	2003-03-11	size
		appd	T. BREWBAKER	2003-03-11	A93KC4040
sheet	revision				A4
index	sheet				type
					CUSTOMER Drawing



SINGLE PINS						
	FCI PART NUMBERS BY PLATING TYPE					
	GXT NOT AVAILABLE	NXT	GOLD NOT AVAILABLE	NICKEL OR NICKEL ALLOY		
STANDARD PINS	---	1B-1ASG	1B-1G5G		NOT AVAILABLE	
	---	1B-2ASG	1B-2G5G			
	---	1B-3ASG	1B-3G5G			
	---	1B-4ASG	1B-4G5G			
	---	1B-5ASG	1B-5G5G		NOT AVAILABLE	
	---	1B-6ASG	1B-6G5G		NOT AVAILABLE	
	---	1B-7ASG	1B-7G5G		NOT AVAILABLE	
	---	1B-8ASG	1B-8G5G		NOT AVAILABLE	
	---	1B-9ASG	1B-9G5G		NOT AVAILABLE	
	---	1B-10ASG	1B-10G5G		NOT AVAILABLE	
	---	1B-13ASG	1B-13G5G		NOT AVAILABLE	
	---	1B-14ASG	1B-14G5G		NOT AVAILABLE	
	---	1B-15ASG	1B-15G5G			
	---	1B-16ASG	1B-16G5G		NOT AVAILABLE	
	---	1B-17ASG	1B-17G5G		NOT TOOLED	
	---	1B-18ASG	1B-18G5G		NOT TOOLED	
	---	1B-19ASG	1B-19G5G		NOT TOOLED	
	---	1B-20ASG	1B-20G5G			
	---	1B-21ASG	1B-21G5G			
	---	1B-22ASG	1B-22G5G		NOT AVAILABLE	
	---	1B-23ASG	1B-23G5G		NOT AVAILABLE	
	---	1B-24ASG	1B-24G5G			
	---	1B-25ASG	1B-25G5G			
	---	1B-26ASG	1B-26G5G			
	---	1B-27ASG	1B-27G5G			
	---	1B-28ASG	1B-28G5G			
	---	1B-29ASG	1B-29G5G		NOT AVAILABLE	
	---	1B-30ASG	1B-30G5G		NOT AVAILABLE	
	---	1B-31ASG	1B-31G5G			
	---	1B-32ASG	1B-32G5G			
	---	1B-33ASG	1B-33G5G		NOT AVAILABLE	
	---	1B-34ASG	1B-34G5G			
	PLATED SHOULDER FOR USE WITH 5G SHORTING CONTACTS			1C-1G5G		NOT AVAILABLE
				1C-2G5G		NOT AVAILABLE
			1C-3G5G		NOT AVAILABLE	
			1C-4G5G		NOT AVAILABLE	
			1C-5G5G		NOT AVAILABLE	
CIRCUIT PACK SIDE BREAKOFF	---	1D-1ASG	1D-1G5G		NOT AVAILABLE	
	---	1D-2ASG	1D-2G5G		NOT AVAILABLE	
	---	1D-4ASG	1D-4G5G	1D-3G5G		
TORLON PIN REFERENCE SEE DRAWING A68KC4093 FOR PIN DETAILS			1E-1		NOT TOOLED	
			1E-2		NOT TOOLED	
			1E-3		NOT TOOLED	
			1E-4		NOT AVAILABLE	
			1E-5		NOT AVAILABLE	

BODY CARRIED, .125 IN. CENTERS, 50,000 PINS/REEL						
	FCI PART NUMBERS BY PLATING TYPE					
	GXT NOT AVAILABLE	NXT	GOLD NOT AVAILABLE	NICKEL OR NICKEL ALLOY		
STANDARD PINS	---	1B-1A	1B-1G		NOT AVAILABLE	
	---	1B-2A	1B-2G			
	---	1B-3A	1B-3G			
	---	1B-4A	1B-4G			
	---	1B-5A	1B-5G		NOT AVAILABLE	
	---	1B-6A	1B-6G		NOT AVAILABLE	
	---	1B-7A	1B-7G		NOT AVAILABLE	
	---	1B-8A	1B-8G		NOT AVAILABLE	
	---	1B-9A	1B-9G		NOT AVAILABLE	
	---	1B-10A	1B-10G		NOT AVAILABLE	
	---	1B-13A	1B-13G			
	---	1B-14A	1B-14G		NOT AVAILABLE	
	---	1B-15A	1B-15G			
	---	1B-16A	1B-16G		NOT AVAILABLE	
	---	1B-17A	1B-17G		NOT TOOLED	
	---	1B-18A	1B-18G		NOT TOOLED	
	---	1B-19A	1B-19G		NOT TOOLED	
	---	1B-20A	1B-20G			
	---	1B-21A	1B-21G			
	---	1B-22A	1B-22G			
	---	1B-23A	1B-23G		NOT AVAILABLE	
	---	1B-24A	1B-24G			
	---	1B-25A	1B-25G		NOT AVAILABLE	
	---	1B-26A	1B-26G			
	---	1B-27A	1B-27G			
	---	1B-28A	1B-28G		NOT AVAILABLE	
	---	1B-29A	1B-29G		NOT AVAILABLE	
	---	1B-30A	1B-30G		NOT AVAILABLE	
	---	1B-31A	1B-31G		NOT AVAILABLE	
	---	1B-32A	1B-32G		NOT AVAILABLE	
	---	1B-33A	1B-33G		NOT AVAILABLE	
	---	1B-34A	1B-34G		NOT AVAILABLE	
	PLATED SHOULDER FOR USE WITH 5G SHORTING CONTACTS			1C-1G		NOT AVAILABLE
				1C-2G		NOT AVAILABLE
			1C-3G		NOT AVAILABLE	
			1C-4G		NOT AVAILABLE	
			1C-5G		NOT AVAILABLE	
CIRCUIT PACK SIDE BREAKOFF	---	1D-1A	1D-1G		NOT AVAILABLE	
	---	1D-2A	1D-2G		NOT AVAILABLE	
	---	1D-4A	1D-4G	1D-3G		

mat'l code	SEE TABLE	surface	tolerance	projection	product family
l/r	ecn no	dr	date	ASME Y14.5 ✓ ASME Y14.5	FASTECH
m				tolerances unless otherwise specified	title
		angles	fin	INCH	1 TYPE CONTACT
				scale N.T.S.	
		dr	T. BREWBAKER	2003-03-11	dwg no
		engr	T. BREWBAKER	2003-03-11	sheet 7 of 7
		chr	T. BREWBAKER	2003-03-11	size
		appd	T. BREWBAKER	2003-03-11	A93KC4040
sheet index	revision sheet				type
					CUSTOMER Drawing