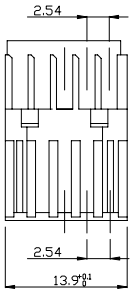
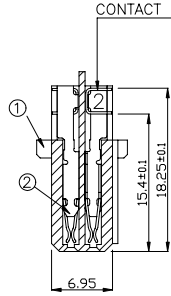


Tous droits strictement réservés. Reproduction ou communication à des tiers interdite sous quelque forme que ce soit sans autorisation écrite du propriétaire. Property of FCI. Droits de reproduction FCI.

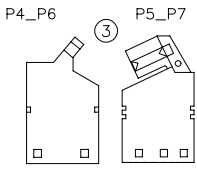
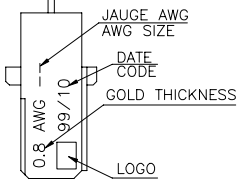
All rights strictly reserved. Reproduction or issue to third parties in any form whatever is not permitted without written authority from the proprietor. Property of FCI. Copyright FCI.



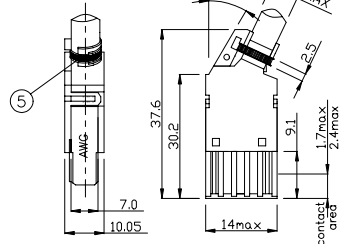
CONNECTOR



CONTACT ITEM 2 IDENTIFICATION SEE DESCRIPTION



HOOD



OVERALL VIEW

PART NUMBER	PLATING CODE & GOLD THICKNESS					DESCRIPTION	DRAWING
	E9 Au:1u	Z4	OR	Z6	Au:0.8u		
5	HPTE1597	-	-	-	-	PLASTIC CABLE CLAMP	-
	HPTE1586	-	-	-	-	CABLE CLAMP ø7.2	VAW19067
	HPTE1585/A	-	-	-	-	CABLE CLAMP ø12.5	VAW19066
4	HPTE1585	-	-	-	-	CROSSHEEDED SCREW OR SLOTTED SCREW	VAW21269 VAW19065
3	BPBS1B10P7	-	1	-	-	1/2 CABLE HOOD FOR AWG30	VRW11174
	BPBS1B10P5	1	-	1	1	1/2 CABLE HOOD FOR AWG24 AWG26	VRW11175
	BPBS1B10P6	-	1	-	-	1/2 CABLE HOOD FOR AWG30	VRW11175
	BPBS1B10P4	1	-	1	1	1/2 CABLE HOOD FOR AWG24 AWG26	VRW11175
2	BPCD3P2--(LF)	10	-	-	10	CONTACT FOR AWG24 (IDENTIFICATION=3)	VTW10916
	BPCD2P2--(LF)	-	-	10	-	CONTACT FOR AWG26 (IDENTIFICATION=2)	VTW10916
	BPCD0P2--(LF)	-	10	-	-	CONTACT FOR AWG30 (IDENTIFICATION=0)	VTW10916
1	BPBS1B10P9	-	1	-	-	BODY FOR AWG30 (COLOR=WHITE)	VRW11171
	BPBS1B10P8	-	1	-	-	BODY FOR AWG26 (COLOR=BLACK)	VRW11171
	BPBS1B10P1	1	-	-	1	BODY FOR AWG24 (COLOR=GREY)	VRW11171
ITEM CATALOGUE NO.	QTY. FOR COMPLETE ASSY					DESCRIPTION	DRAWING

NOTES:  
 1.MATERIAL:  
 HOOD:THERMALPLATIC UL94V0;  
 BODY:GLASSFIBER REINFORCED THERMALPLASTIC UL94V0;  
 CONTACTS:PHOSPHOR BRONZE;  
 PLATING:GOLD OVER 2um NICKEL ON WORKING AREA.  
 2.MECHANICAL REQUIREMENT:  
 INSERTION FORCE(EACH CONTACT):<=1N;  
 WITHDRAWAL FORCE (EACH CONTACT):>=0.19N;  
 DURABILITY:>=100CYCLES.  
 3.ELECTRICAL REQUIREMENT:  
 INITIAL CONTACT RESISTANCE:<=20MILLIOHM;  
 INSULATION RESISTANCE AFTER TEST:>=10000MEGAOHM;  
 WITHSTANDING VOLTAGE:>1000Vrms;  
 OPERATING VOLTAGE:250VAC;  
 OPERATING CURRENT:1.3A AT 70 DEGREE.  
 4.IF LEAD FREE P/N, GS-14-920 SHOULD BE APPLIED.  
 5.THIS PRODUCT MEETS EUROPEAN UNION DIRECTIVES AND OTHER COUNTRY REGULATIONS AS DESCRIBED IN GS-22-008.

mat'l. code SEE NOTES				tolerances unless otherwise specified		CUSTOMER COPY	FCI www.fciconnect.com
ltr	ecr no	dr	date	linear	.X ± 0.5		
A	F03021	DLE	01/29/03		.XX ± 0.30		HOOD AND CABLE CONNECTOR ASSY 2X5
B	N05-0223	AILEI	09/05/05	angles	± 2°		
				dr	D LEGRAND 01/29/03	scale 1:1	size
				enrg	F TISSERAND 01/29/03		
				chr	JF NOTTEAU 01/29/03	sheet 1 of 1	
				appd	F. TI 01/29/03		
sheet index	revision sheet	B	1				

PDM: Rev:B

STATUS: Released

Printed: Jun 25, 2010