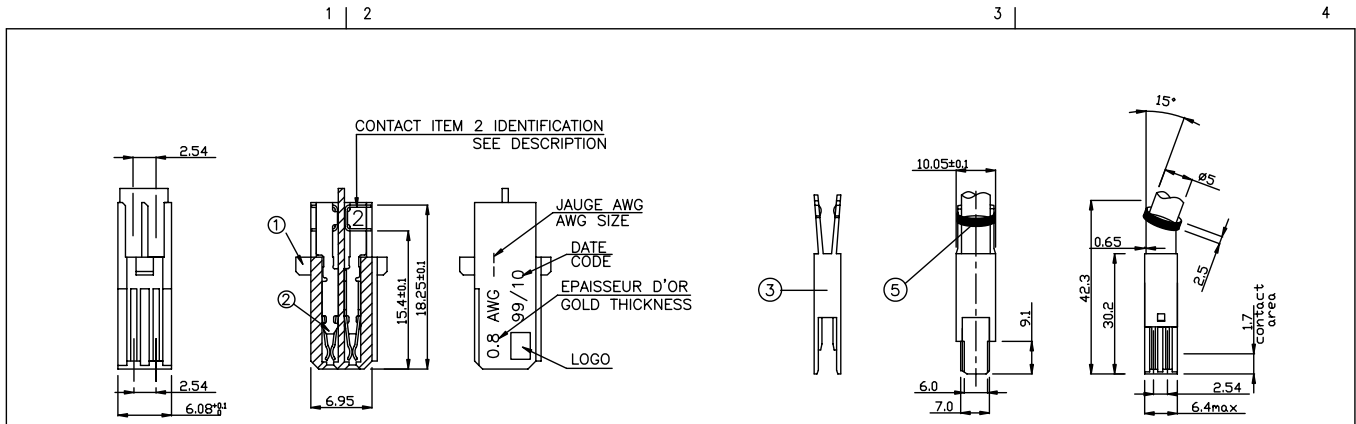


Tous droits strictement réservés. Reproduction ou communication à des tiers interdite sous quelque forme que ce soit sans autorisation écrite du propriétaire. Propriété de c FCI. Droits de reproduction FCI.

FCI

All rights strictly reserved. Reproduction or issue to third parties in any form whatever is not permitted without written authority from the proprietor. Property of FCI. Copyright FCI.



NOTES:
 1. MATERIAL:
 HOOD:THERMALPLATIC UL94V0;
 BODY:GLASSFIBER REINFORCED THERMALPLASTIC UL94V0;
 CONTACTS:PHOSPHOR BRONZE;
 PLATING:GOLD OVER 2um NICKEL ON WORKING AREA.
 2. MECHANICAL REQUIREMENT:
 INSERTION FORCE(EACH CONTACT):<=1N;
 WITHDRAWAL FORCE (EACH CONTACT):>=0.19N;
 DURABILITY:>=100CYCLES.
 3. ELECTRICAL REQUIREMENT:
 INITIAL CONTACT RESISTANCE:<=20MILLIOHM;
 INSULATION RESISTANCE AFTER TEST:>=10000MEGAOHM;
 WITHSTANDING VOLTAGE:>1000Vrms;
 OPERATING VOLTAGE:250VAC;
 OPERATING CURRENT:1.3A AT 70 DEGREE.
 4. IF LEAD FREE P/N, GS-14-920 SHOULD BE APPLIED.
 5. THIS PRODUCT MEETS EUROPEAN UNION DIRECTIVES AND OTHER COUNTRY REGULATIONS AS DESCRIBED IN GS-22-008.

PART NUMBER	PLATING CODE&GOLD THICKNESS			E9 Au:1u		Z4 or Z6 Au:0.8u		DESCRIPTION	DRAWING
5	HPTE1597							PLASTIC CABLE CLAMP	-
	HPTE1586							CABLE CLAMP #7.2	VAW19067
	HPTE1585/A							CABLE CLAMP #12.5	VAW19066
4	HPTE1585							CROSSHEEDED SCREW OR SLOTTED SCREW	VAW21269
	HPTE1585							CROSSHEEDED SCREW OR SLOTTED SCREW	VAW19065
3	BPBS1804P4					1	1	CABLE HOOD	VRW11173
	BPBS1804P4					1	1	CABLE HOOD	VRW11173
2	BPCD3P2--(LF)						4	CONTACT FOR AWG24 (IDENTIFICATION=3)	
	BPCD2P2--(LF)						4	CONTACT FOR AWG26 (IDENTIFICATION=2)	VTW10916
	BPCD0P2--(LF)					4		CONTACT FOR AWG30 (IDENTIFICATION=0)	
	BPBS1804P9					1		BODY FOR AWG30 (COLOR=WHITE)	
1	BPBS1804P8						1	BODY FOR AWG26 (COLOR=BLACK)	VRW11169
	BPBS1804P1						1	BODY FOR AWG24 (COLOR=GREY)	
ITEM CATALOG N°		QTY. FOR COMPLETE ASSY				DESCRIPTION			DRAWING

mat'l. code				tolerances unless otherwise specified		CUSTOMER COPY		 www.fciconnect.com	
ltr	ecn no	dr	date	linear	.X ± 0.5	projection		title	
A	F03021	DLE	01/29/03		.XX ± 0.30			ASSY 2X2	
B	F04-0107	DLE	01/21/04					CAPOT & CON.	VXX27633
C	N05-0006	YS	01/11/05	angles	± 2°			product family	DIN
D	N05-0223	AILEI	09/05/05	dr	b	LEGRAND	01/29/03	size	dwg no
				engr	F	TISSERAND	01/29/03	A4	VJW12162
				chr	JF	NOTTEAU	01/29/03	scale	1:1
				appd	F. TI		01/29/03		sheet 1 of 1
sheet index	revision sheet	D	1						

PDM: Rev:D STATUS Released 2006 Printed: Jul 25, 2010