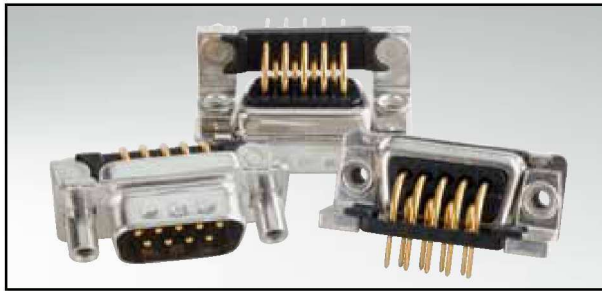


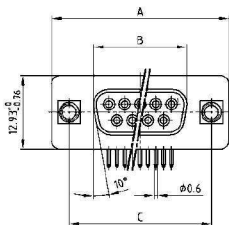
D-SUB STANDARD

Solder pin – Angled – .318”/7.19 mm – Precision machined contacts – Metal bracket



RoHS compliant – CSA listed, File No.: LR 115000-1 – UL listed, File No.: E202784

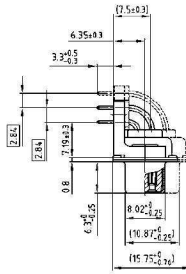
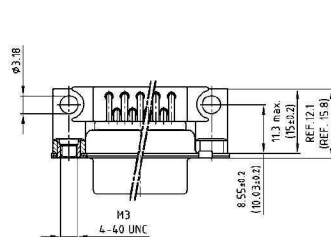
SOCKET CONNECTOR



No. of pos.	A 0.76	B 0.25	C
09	31.19	16.46	25.00 ^{+0.12}
15	39.52	24.79	33.30 ^{+0.15}
25	53.42	38.50	47.04 ^{+0.18}
37	69.70	54.96	63.50 ^{+0.23}
50	67.31	52.55	61.10 ^{+0.14}

PCB layout: Kat1kGEA

Mounting style: Threaded insert

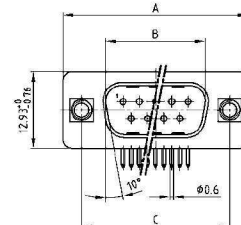


50 pos. = Dim. in (_)

DESCRIPTION

- Mounting styles:
 - with mounting bracket and 4-40 UNC or M3 threaded insert
 - with mounting bracket and 4-40 UNC or M3 front spacer
 - with mounting bracket, PCB clip and 4-40 UNC or M3 threaded insert
 - with mounting bracket, PCB clip and 4-40 UNC or M3 front spacer
- Quality class 3 (also available in quality class 1)
- Shell: Steel tin plated (brass tin plated or stainless steel available on request)

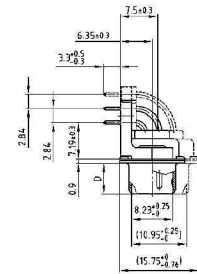
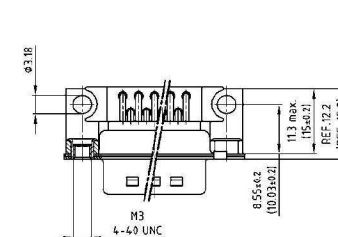
PLUG CONNECTOR



No. of pos.	A 0.76	B ±0.25	C	D 0.3
09	31.19	16.79	25.00 ^{+0.12}	6.12
15	39.52	25.12	33.30 ^{+0.15}	6.12
25	53.42	38.84	47.04 ^{+0.18}	5.99
37	69.70	55.30	63.50 ^{+0.18}	5.99
50	67.31	52.68	61.10 ^{+0.14}	5.99

PCB layout: Kat1kGFA

Mounting style: Threaded insert



50 pos. = Dim. in (_)

ORDER DATA

SOCKET CONNECTOR		
No. of pos.	Mounting style	Part Number
09	4-40 UNC Threaded insert	164 A 11519 X
15	4-40 UNC Threaded insert	164 A 11529 X
25	4-40 UNC Threaded insert	164 A 11539 X
37	4-40 UNC Threaded insert	164 A 11549 X
50	4-40 UNC Threaded insert	164 A 18969 X
09	M3 Threaded insert	164 A 13439 X
15	M3 Threaded insert	164 A 13449 X
25	M3 Threaded insert	164 A 13459 X
37	M3 Threaded insert	164 A 13469 X
50	M3 Threaded insert	164 A 18979 X

PLUG CONNECTOR		
No. of pos.	Mounting style	Part Number
09	4-40 UNC Threaded insert	163 A 13069 X
15	4-40 UNC Threaded insert	163 A 13079 X
25	4-40 UNC Threaded insert	163 A 13089 X
37	4-40 UNC Threaded insert	163 A 13099 X
50	4-40 UNC Threaded insert	163 A 18549 X
09	M3 Threaded insert	163 A 14959 X
15	M3 Threaded insert	163 A 14969 X
25	M3 Threaded insert	163 A 14979 X
37	M3 Threaded insert	163 A 14989 X
50	M3 Threaded insert	163 A 18559 X

