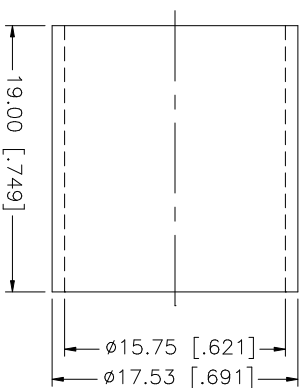
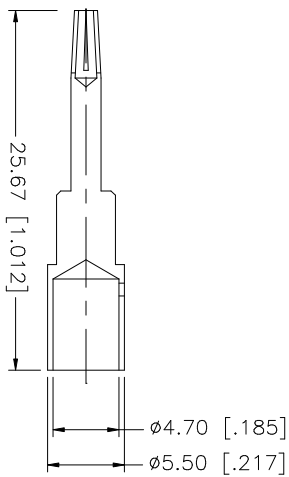
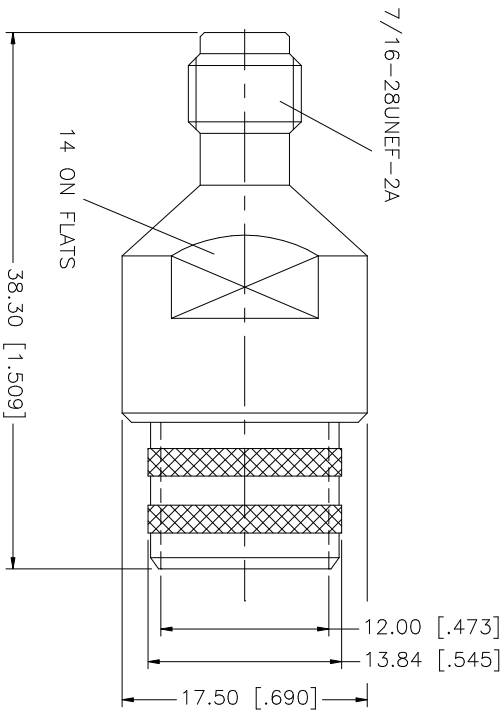
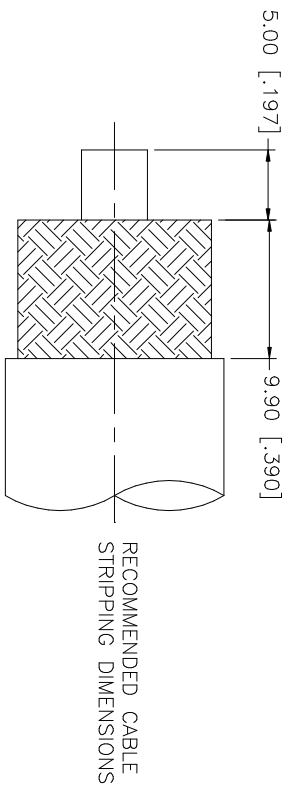


REV.	DATE	DESCRIPTION
A	06/15/99	MODIFY DESCRIPTION
B	05/09/06	MODIFY CONNECTOR BODY
C	05/09/06	UPDATE DRAWING FORMAT, ADD CRIMP NOTES



- NOTE:
1. USE CONNEX CRIMP HANDLE #47-4009-20 W/DIE #47-4009-01 TO CRIMP FERRULE.
  2. SOLDER CENTER CONTACT.

**Amphenol Connex**

TNC CRIMP JACK  
(LMR 600 CABLE)

122418

UNLESS OTHERWISE SPECIFIED DIMENSIONS ARE INCHES AND FRACTIONS THEREAFTER ONLY. TOLERANCES FOR MILLIMETERS ARE:	APPROVALS	DATE	PART DESCRIPTION
0.5 - 8mm ± 0.20mm	DRAWN G.R.S.	06/01/06	
8 - 30mm ± 0.40mm	CHECKED		
30 - 120mm ± 0.50mm	ISSUED		
UNLESS OTHERWISE SPECIFIED DIMENSIONS FOR INCHES ARE:	SHEET 1 OF 1		
.020 - .315 = ± 0.007"			
.315 - 1.180 = ± 0.015"			
1.180 - 4.724 = ± 0.020"			
DO NOT SCALE DRAWING	CAD FILE C:/122/122418.DWG	DWG NO. 122418.DWG	REV. C
			SIZE A
			SCALE NA

QTY	FINISH	MATERIAL	DESCRIPTION
1	NICKEL	BRASS	FERRULE
1	GOLD	BRASS	CONTACT PIN
1	NATURAL	TEFLON	INSULATOR
1	NICKEL	BRASS	BODY