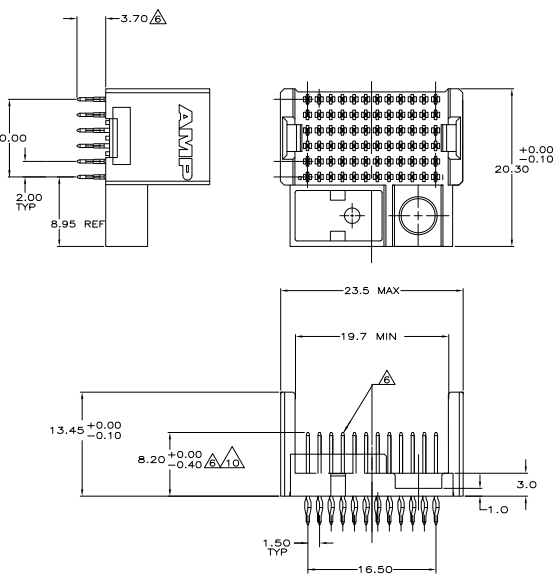
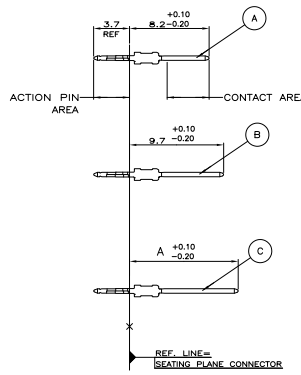


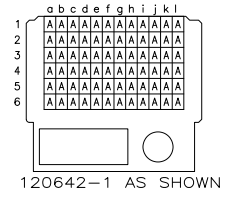
CONNECTOR ASSEMBLY EXAMPLARY LOADED Δ



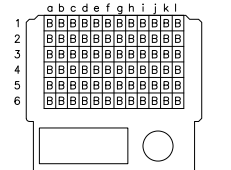
CONTACT DIMENSIONS SCALE 5:1



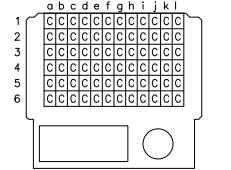
CONTACT LAYOUT Δ



Δ OBSOLETE 120642-2 AS SHOWN



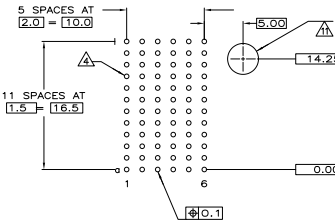
Δ OBSOLETE 120642-3 AS SHOWN



- Δ MATERIAL:
CONTACT: PHOSPHOR BRONZE.
HOUSING: GLASS-FILLED POLYESTER.
- Δ GENERAL PLATING SPECIFICATION: UNDERPLATING
(ENTIRE CONTACT): 1.27 μ m MIN NICKEL AND ACTION
PIN: 0.5 μ m MIN TIN/LEAD.
FOR PLATING OF MATING SURFACES SEE APPLICABLE
SPECIFICATION REFERENCE FOR EACH DASH NUMBER.
- Δ PLATED-THROUGH HOLES AT 2x1.5mm SQUARE GRID
TOTAL 72 HOLES
- Δ FOR ACTUAL PIN LOADING SEE "CONTACT LAYOUT"
- Δ FOR ACTUAL PIN DIMENSIONS SEE "CONTACT DIMENSIONS"
- Δ ANY CONTACT CAN BE LOADED IN ANY POSITION
- 8 KEY AND ALIGNMENT PIN ASSEMBLED BY END USER AT APPLICATION
- Δ DIMENSIONS REFERS TO SEATED HEIGHT
- Δ DIMENSIONS REFERS TO AS-ASSEMBLED HEIGHT
- Δ GUIDE PIN HOLE DIAMETER CLEARANCE DEFINED BY CHOICE OF GUIDE PIN
- Δ CONFORMS TO ALL TESTING ACCORDING TO IEC 61076-4-101
PERFORMANCE LEVEL 2
- Δ OBSOLETE PARTS: OBSOLETE CIS STREAMLINING PER D.RENAUD/D.SINISI

RECOMMENDED PCB-HOLE LAY-OUT COMPONENT SIDE SHOWN

P.C.B. HOLE DIM. ACTION PIN
 DRILLED HOLE: 0,740,025mm
 FIN. HOLE : 0,55 TO 0,65mm
 Cu-thks : 0,025 TO 0,050mm
 SnPb-thks : 0,004 TO 0,010mm



Δ OBSOLETE	120642-3
Δ OBSOLETE	120642-2
Δ OBSOLETE	120642-1
	PART NUMBER

THIS DRAWING IS A CONTROLLED DOCUMENT		REVISED BY		DATE	
DESIGNED BY	REVISED BY	DATE	DATE	DATE	DATE
APPROVED BY	APPROVED BY	DATE	DATE	DATE	DATE
CUSTOMER DRAWING			DRAWING NO. 120642		
SIZE 4:1			SHEET 1 OF 1		