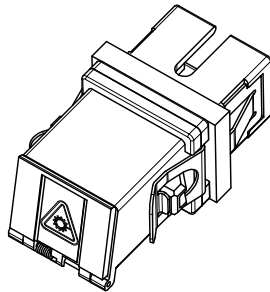
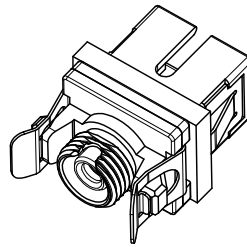


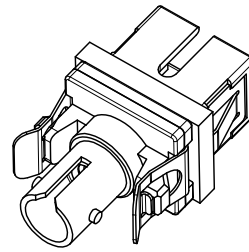
SHOWN WITH DUST CAP
INSTALLED (NO MODULE)



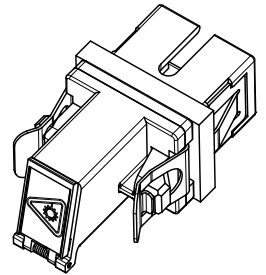
SC-SC VERSIONS
SEE SHEET 3



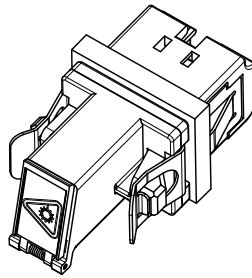
SC-FC VERSIONS
SEE SHEET 4



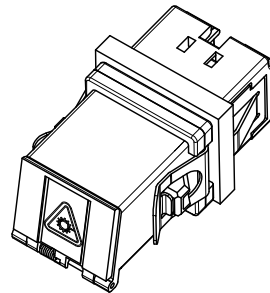
SC-ST VERSIONS
SEE SHEET 5



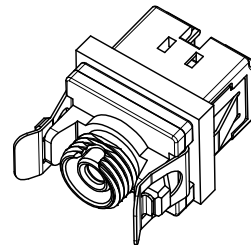
SC-LC VERSION
SEE SHEET 6



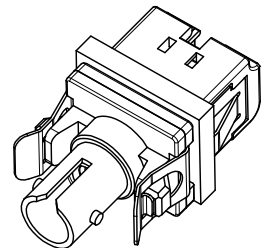
LC-LC VERSIONS
SEE SHEET 7



LC-SC VERSION
SEE SHEET 8



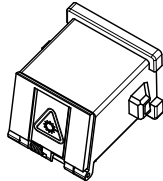
LC-FC VERSION
SEE SHEET 9



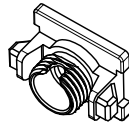
LC-ST VERSION
SEE SHEET 10

| | | | | | | | | | |
|--|-------------------------------|---|----------------------|--------------------------|---------------------|-------------------------|------------------------|--------------------------------|-------------------------------|
| ENTER DESCRIPTION EC NO: MF2010-0212 DRAWN: SERNST CHKD: SMIGO APPR: SMIGO 2009/11/09 2009/11/11 2009/11/11 | QUALITY SYMBOLS ▽=0 ▽=0 | GENERAL TOLERANCES (UNLESS SPECIFIED) | | DIMENSION STYLE MM/IN | SCALE 2.5:1 | DESIGN UNITS METRIC | THIRD ANGLE PROJECTION | | |
| | | 4 PLACES ± --- ± --- | 3 PLACES ± --- ± --- | 2 PLACES ± --- ± --- | 1 PLACE ± --- ± --- | DRAWN BY SERNST | DATE 2006/02/13 | TITLE UNIVERSAL EMI ADAPTER | |
| | | ANGULAR ± 1 ° | | | | CHECKED BY DSZILAGYI | DATE 2006/03/07 | MOLEX INCORPORATED | |
| | | DRAFT WHERE APPLICABLE MUST REMAIN WITHIN DIMENSIONS | | | | APPROVED BY SMIGO | DATE 2006/03/07 | MATERIAL NO. SEE TABLES | DOCUMENT NO. SD-106154-001 |

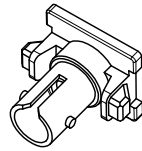
| MODULE P/N | TYPE | COLOR |
|------------|------|-------|
| 1061540020 | SC | BLUE |
| 1061540022 | | BEIGE |
| 1061540025 | | GREEN |
| 1061540031 | FC | BLUE |
| 1061540033 | | BEIGE |
| 1061540036 | | GREEN |
| 1061540041 | ST | BLUE |
| 1061540043 | | BEIGE |
| 1061540130 | LC | BLUE |
| 1061540131 | | BEIGE |
| 1061540132 | | GREEN |



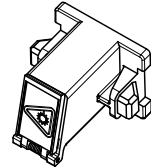
SC



FC

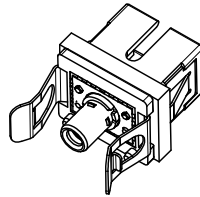


ST

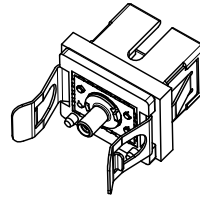


LC

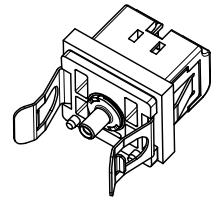
| BASE P/N | TYPE | SLEEVE MAT'L | TYPE |
|------------|-------------|--------------|-------------------|
| 1061540010 | SINGLE MODE | ZIRCONIA | SC BASE TO 2.5mm |
| 1061540012 | MULTIMODE | PHOS BRONZE | SC BASE TO 2.5mm |
| 1061540013 | SM/MM | NICKEL | SC BASE TO 1.25mm |
| 1061540210 | SINGLE MODE | ZIRCONIA | LC BASE TO 1.25mm |
| 1061540212 | MULTIMODE | PHOS BRONZE | LC BASE TO 1.25mm |
| 1061540213 | SM/MM | NICKEL | LC BASE TO 2.5mm |



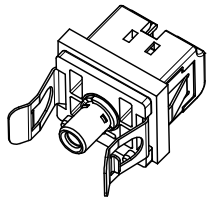
SC TO 2.5mm



SC TO 1.25mm



LC TO 1.25mm



LC TO 2.5mm

| SLEEVE ASBY | TYPE | SLEEVE MAT'L | TYPE |
|-------------|-------------|--------------|-------------------------|
| 1061540050 | SINGLE MODE | ZIRCONIA | 2.5mm |
| 1061540051 | MULTIMODE | PHOS BRONZE | 2.5mm |
| 1061540052 | SINGLE MODE | ZIRCONIA | 1.25mm |
| 1061540053 | MULTIMODE | PHOS BRONZE | 1.25mm |
| 1061540054 | SM/MM | NICKEL | HYBRID 1.25 TO 2.5mm |



2.5mm

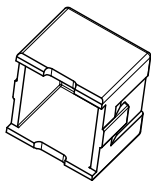


1.25mm



HYBRID

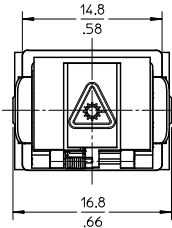
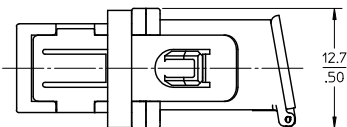
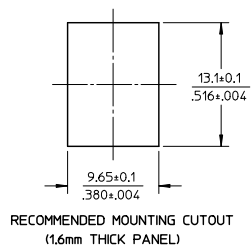
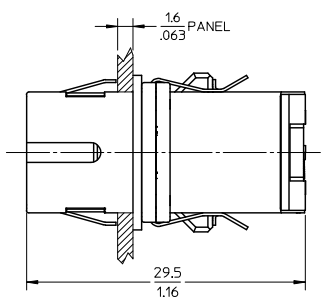
DUST CAP
P/N 1061540006



| | | | | | | | | |
|--|-------------------------------|---------------------------------------|-------------|---|------------|-----------------------|------------------------|--|
| ENTER DESCRIPTION EC NO: MF2010-0212 DRAWN: SERNST CHKD: DSZILAGYI APPR: SMIGO | QUALITY SYMBOLS ▽=0 ▽=0 | GENERAL TOLERANCES (UNLESS SPECIFIED) | | DIMENSION STYLE | SCALE | DESIGN UNITS | THIRD ANGLE PROJECTION | |
| | | mm | INCH | MM/IN | 2:1 | METRIC | | |
| | | 4 PLACES | ± --- ± --- | DRAWN BY | DATE | TITLE | | |
| | | 3 PLACES | ± --- ± --- | SERNST | 2006/02/13 | UNIVERSAL EMI ADAPTER | | |
| 2 PLACES | ± --- ± --- | CHECKED BY | DATE | MOLEX INCORPORATED DOCUMENT NO. SD-106154-001 SHEET NO. 2 OF 10 | | | | |
| 1 PLACE | ± --- ± --- | DSZILAGYI | 2006/03/07 | | | | | |
| ANGULAR ± 1 ° | | APPROVED BY | DATE | THIS DRAWING CONTAINS INFORMATION THAT IS PROPRIETARY TO MOLEX INCORPORATED AND SHOULD NOT BE USED WITHOUT WRITTEN PERMISSION | | | | |
| DRAFT WHERE APPLICABLE MUST REMAIN WITHIN DIMENSIONS | | SMIGO | 2006/03/07 | | | | | |
| A4 | | MATERIAL NO. | | SEE TABLES | | | | |
| REV | | SIZE | | B | | | | |

10 9 8 7 6 5 4 3 2 106154

| ADAPTER P/N | STYLE | TYPE | SLEEVE MAT'L | MODULE COLOR |
|-------------|-----------|-------------|-----------------|--------------|
| 1061541000 | SC-SC | SINGLE MODE | ZIRCONIA | BLUE |
| 1061541005 | SC-SC/APC | | | GREEN |
| 1061541001 | SC-SC | MULTIMODE | PHOSPHOR BRONZE | BEIGE |



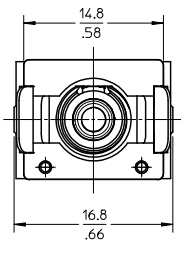
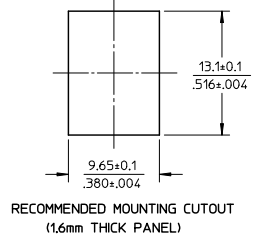
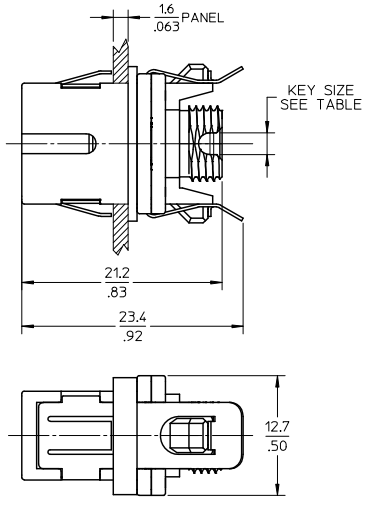
NOTES:
1. ALL DIMENSIONS ARE FOR REFERENCE ONLY.
2. PACKAGING: ADAPTERS AND DUSTCAPS ARE PACKED IN A PLASTIC TRAY.

| | | | | | | |
|---|--|--|---|--------------------|--------------|------------------------|
| ENTER DESCRIPTION EC NO: MF2010-0212 DRAWN: SERNST CHKD: CHYKD APPR: SMIGO 2009/11/09 2009/11/11 2009/11/11 | QUALITY SYMBOLS | GENERAL TOLERANCES (UNLESS SPECIFIED) mm INCH 4 PLACES ± --- ± --- 3 PLACES ± --- ± --- 2 PLACES ± --- ± --- 1 PLACE ± --- ± --- ANGULAR ± 1 ° | DIMENSION STYLE | SCALE | DESIGN UNITS | THIRD ANGLE PROJECTION |
| | ▽=0 ▽=0 | | MM/IN | 2.5:1 | METRIC | |
| | DRAWN BY SERNST DATE 2006/02/13 | CHECKED BY DSZILAGYI DATE 2006/03/07 | TITLE | | | UNIVERSAL EMI ADAPTER |
| | APPROVED BY SMIGO DATE 2006/03/07 | MATERIAL NO. SEE TABLE | DOCUMENT NO. SD-106154-001 | MOLEX INCORPORATED | | SHEET NO. 3 OF 10 |
| REV A4 | DRAFT WHERE APPLICABLE MUST REMAIN WITHIN DIMENSIONS | SIZE B | THIS DRAWING CONTAINS INFORMATION THAT IS PROPRIETARY TO MOLEX INCORPORATED AND SHOULD NOT BE USED WITHOUT WRITTEN PERMISSION | | | |

lb_frame_B_P_AM_T
Rev. D 2004/06/28

9 8 7 6 5 4 3 2 1

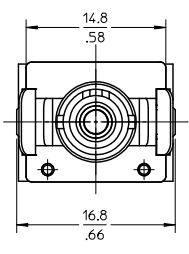
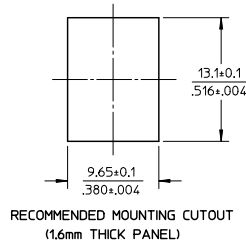
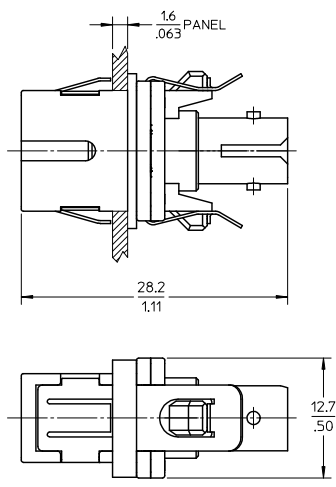
| ADAPTER P/N | STYLE | TYPE | SLEEVE MAT'L | MODULE COLOR | KEY SIZE (mm) |
|-------------|-----------|-------------|-----------------|--------------|---------------|
| 1061541010 | SC-FC | SINGLE MODE | ZIRCONIA | BLUE | 2.3 |
| 1061541015 | SC-FC/APC | | | GREEN | 2 |
| 1061541011 | SC-FC | MULTIMODE | PHOSPHOR BRONZE | BEIGE | 2.3 |



NOTES:
 1. ALL DIMENSIONS ARE FOR REFERENCE ONLY.
 2. PACKAGING: ADAPTERS AND DUSTCAPS ARE PACKED IN A PLASTIC TRAY.

| | | | | | | |
|--|--|--|---|-----------------------|--------------|------------------------|
| ENTER DESCRIPTION EC NO: MF2010-0212 DRAWN: SERNST CHKD: CHYKD APPR: SMIGO 2009/11/09 2009/11/11 2009/11/11 | QUALITY SYMBOLS | GENERAL TOLERANCES (UNLESS SPECIFIED) mm INCH 4 PLACES ± --- ± --- 3 PLACES ± --- ± --- 2 PLACES ± --- ± --- 1 PLACE ± --- ± --- ANGULAR ± 1 ° | DIMENSION STYLE | SCALE | DESIGN UNITS | THIRD ANGLE PROJECTION |
| | ▽=0 ▽=0 | | MM/IN | 2.5:1 | METRIC | |
| | DRAFT WHERE APPLICABLE MUST REMAIN WITHIN DIMENSIONS | DRAWN BY: SERNST DATE: 2006/02/13 CHECKED BY: DSZILAGYI DATE: 2006/03/07 APPROVED BY: SMIGO DATE: 2006/03/07 | TITLE | UNIVERSAL EMI ADAPTER | | |
| | MATERIAL NO. SEE TABLE SIZE B | MOLEX INCORPORATED DOCUMENT NO. SD-106154-001 SHEET NO. 4 OF 10 | THIS DRAWING CONTAINS INFORMATION THAT IS PROPRIETARY TO MOLEX INCORPORATED AND SHOULD NOT BE USED WITHOUT WRITTEN PERMISSION | | | |

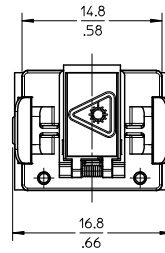
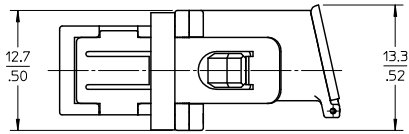
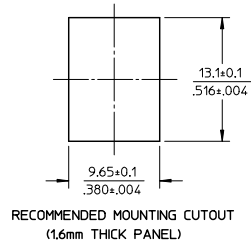
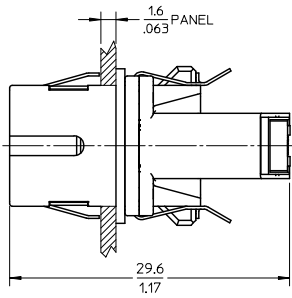
| ADAPTER P/N | STYLE | TYPE | SLEEVE MAT'L | MODULE COLOR |
|-------------|-------|-------------|--------------|--------------|
| 1061541020 | SC-ST | SINGLE MODE | ZIRCONIA | BLUE |
| 1061541021 | | MULTIMODE | PHOS BRONZE | BEIGE |



- NOTES:
 1. ALL DIMENSIONS ARE FOR REFERENCE ONLY.
 2. PACKAGING: ADAPTERS AND DUSTCAPS ARE PACKED IN A PLASTIC TRAY.

| | | | | | | | |
|--|--|--|---|--|--------------|---|-------|
| ENTER DESCRIPTION EC NO: MF2010-0212 DRAWN: SERNST CHKD: CHYKD APPR: SMIGO 2009/11/09 2009/11/11 2009/11/11 | QUALITY SYMBOLS | GENERAL TOLERANCES (UNLESS SPECIFIED) mm INCH 4 PLACES ± --- ± --- 3 PLACES ± --- ± --- 2 PLACES ± --- ± --- 1 PLACE ± --- ± --- ANGULAR ± 1 ° | DIMENSION STYLE | SCALE | DESIGN UNITS | THIRD ANGLE PROJECTION | |
| | ▽=0 ▽=0 | | MM/IN | 2.5:1 | METRIC | DRAWN BY: SERNST DATE: 2006/02/13 CHECKED BY: DSZILAGYI DATE: 2006/03/07 APPROVED BY: SMIGO DATE: 2006/03/07 | TITLE |
| | DRAFT WHERE APPLICABLE MUST REMAIN WITHIN DIMENSIONS | | SEE TABLE | MOLEX INCORPORATED DOCUMENT NO. SD-106154-001 | | SHEET NO. | |
| | SIZE B | | THIS DRAWING CONTAINS INFORMATION THAT IS PROPRIETARY TO MOLEX INCORPORATED AND SHOULD NOT BE USED WITHOUT WRITTEN PERMISSION | | | | |

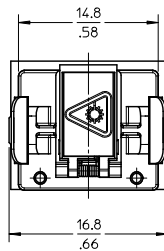
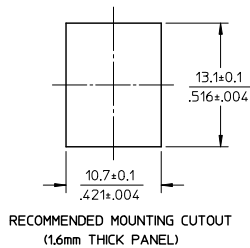
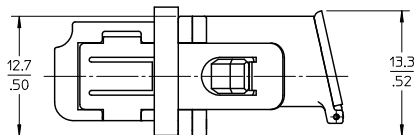
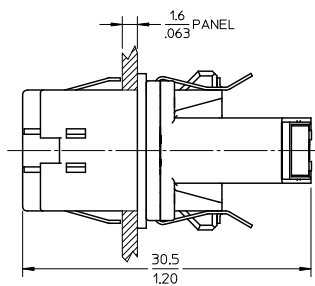
| ADAPTER P/N | STYLE | TYPE | SLEEVE MAT'L | MODULE COLOR |
|-------------|-------|----------|--------------|--------------|
| 1061541030 | SC-LC | SM OR MM | NICKEL | BEIGE |



- NOTES:
1. ALL DIMENSIONS ARE FOR REFERENCE ONLY.
 2. PACKAGING: ADAPTERS AND DUSTCAPS ARE PACKED IN A PLASTIC TRAY.

| | | | | | | | |
|--|-----------------|---------------------------------------|----------------------|-----------------|------------|---|------------------------|
| ENTER DESCRIPTION EC NO: MF2010-0212 DRAWN: SERNST CHKD: CHYKD APPR: SMIGO 2009/11/09 2009/11/11 2009/11/11 | QUALITY SYMBOLS | GENERAL TOLERANCES (UNLESS SPECIFIED) | | DIMENSION STYLE | SCALE | DESIGN UNITS | THIRD ANGLE PROJECTION |
| | ▽=0 | mm | INCH | MM/IN | 2.5:1 | METRIC | |
| | ▽=0 | 4 PLACES ± --- ± --- | 3 PLACES ± --- ± --- | DRAWN BY | DATE | TITLE | |
| | | 2 PLACES ± --- ± --- | 1 PLACE ± --- ± --- | SERNST | 2006/02/13 | UNIVERSAL EMI ADAPTER | |
| | | ANGULAR ± 1 ° | | CHECKED BY | DATE | MOLEX INCORPORATED | |
| | | | | DSZILAGYI | 2006/03/07 | MATERIAL NO. DOCUMENT NO. | |
| | | | | APPROVED BY | DATE | SD-106154-001 | |
| | | | | SMIGO | 2006/03/07 | SHEET NO. | |
| | | | | | | 6 OF 10 | |
| | | | | | | THIS DRAWING CONTAINS INFORMATION THAT IS PROPRIETARY TO MOLEX INCORPORATED AND SHOULD NOT BE USED WITHOUT WRITTEN PERMISSION | |

| ADAPTER P/N | STYLE | TYPE | SLEEVE MAT'L | MODULE COLOR |
|-------------|-----------|-------------|-----------------|--------------|
| 1061541530 | LC-LC | SINGLE MODE | ZIRCONIA | BLUE |
| 1061541535 | LC-LC/APC | | | GREEN |
| 1061541531 | LC-LC | MULTIMODE | PHOSPHOR BRONZE | BEIGE |



- NOTES:
 1. ALL DIMENSIONS ARE FOR REFERENCE ONLY.
 2. PACKAGING: ADAPTERS AND DUSTCAPS ARE PACKED IN A PLASTIC TRAY.

| | |
|--------------------|------------|
| ENTER DESCRIPTION | 2009/11/09 |
| EC NO: MF2010-0212 | 2009/11/11 |
| DRWN:SERNST | 2009/11/11 |
| CHKD: SMIGO | 2009/11/11 |
| APPR: SMIGO | |
| REV | |
| A4 | |

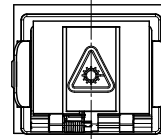
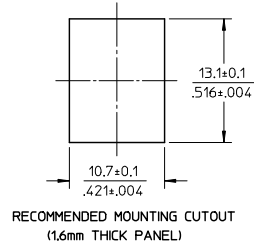
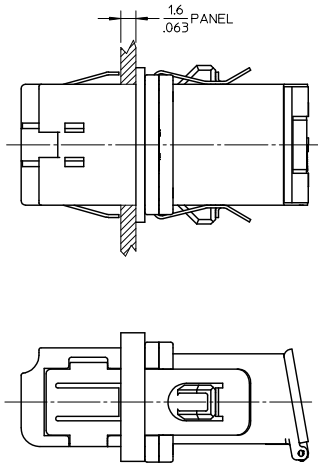
| |
|-----------------|
| QUALITY SYMBOLS |
| ▽=0 |
| ▽=0 |

| GENERAL TOLERANCES (UNLESS SPECIFIED) | |
|--|---------|
| mm | INCH |
| 4 PLACES ± .005 | ± .0004 |
| 3 PLACES ± .003 | ± .0003 |
| 2 PLACES ± .002 | ± .0002 |
| 1 PLACE ± .001 | ± .0001 |
| ANGULAR ± 1 ° | |
| DRAFT WHERE APPLICABLE MUST REMAIN WITHIN DIMENSIONS | |

| | | | | |
|-----------------|------------|-----------------------|--------------|------------------------|
| DIMENSION STYLE | | SCALE | DESIGN UNITS | THIRD ANGLE PROJECTION |
| MM/IN | | 2.5:1 | METRIC | |
| DRAWN BY | DATE | TITLE | | |
| SERNST | 2006/02/13 | UNIVERSAL EMI ADAPTER | | |
| CHECKED BY | DATE | MATERIAL NO. | | |
| DSZILAGYI | 2006/03/07 | SEE TABLE | | |
| APPROVED BY | DATE | DOCUMENT NO. | | |
| SMIGO | 2006/03/07 | SD-106154-001 | | |
| SIZE | | SHEET NO. | | |
| B | | 7 OF 10 | | |

| | | | | |
|---|--|---------------|--|-----------|
| MATERIAL NO. | | DOCUMENT NO. | | SHEET NO. |
| SEE TABLE | | SD-106154-001 | | 7 OF 10 |
| THIS DRAWING CONTAINS INFORMATION THAT IS PROPRIETARY TO MOLEX INCORPORATED AND SHOULD NOT BE USED WITHOUT WRITTEN PERMISSION | | | | |

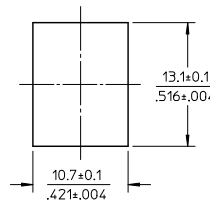
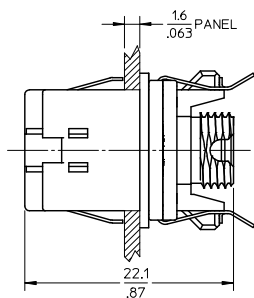
| ADAPTER P/N | STYLE | TYPE | SLEEVE MAT'L | MODULE COLOR |
|-------------|-------|----------|--------------|--------------|
| 1061541500 | LC-SC | SM OR MM | NICKEL | BEIGE |



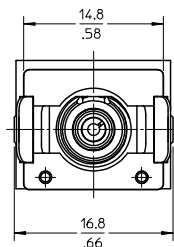
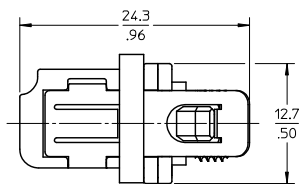
- NOTES:
- ALL DIMENSIONS ARE FOR REFERENCE ONLY.
 - PACKAGING: ADAPTERS AND DUSTCAPS ARE PACKED IN A PLASTIC TRAY.

| | | | | | | | | |
|--|-------------------------------|---------------------------------------|------------|---|------------|-----------------------|------------------------|--|
| ENTER DESCRIPTION EC NO: MF2010-0212 DRAWN: SERNST CHKD: CHYKD APPR: SMIGO | QUALITY SYMBOLS ▽=0 ▽=0 | GENERAL TOLERANCES (UNLESS SPECIFIED) | | DIMENSION STYLE | SCALE | DESIGN UNITS | THIRD ANGLE PROJECTION | |
| | | mm | INCH | MM/IN | 2.5:1 | METRIC | | |
| | | 4 PLACES ± --- ± --- | | DRAWN BY | DATE | TITLE | | |
| | | 3 PLACES ± --- ± --- | | SERNST | 2006/02/13 | UNIVERSAL EMI ADAPTER | | |
| 2 PLACES ± --- ± --- | | CHECKED BY | DATE | MOLEX INCORPORATED DOCUMENT NO. SD-106154-001 SHEET NO. 8 OF 10 | | | | |
| 1 PLACE ± --- ± --- | | DSZILAGYI | 2006/03/07 | | | | | |
| ANGULAR ± 1 ° | | APPROVED BY | DATE | THIS DRAWING CONTAINS INFORMATION THAT IS PROPRIETARY TO MOLEX INCORPORATED AND SHOULD NOT BE USED WITHOUT WRITTEN PERMISSION | | | | |
| DRAFT WHERE APPLICABLE MUST REMAIN WITHIN DIMENSIONS | | MATERIAL NO. | DATE | | | | | |
| REV A4 | | SEE TABLE | 2006/03/07 | | | | | |

| ADAPTER P/N | STYLE | TYPE | SLEEVE MAT'L | MODULE COLOR |
|-------------|-------|----------|--------------|--------------|
| 1061541510 | LC-FC | SM OR MM | NICKEL | BEIGE |



RECOMMENDED MOUNTING CUTOUT
(1.6mm THICK PANEL)



NOTES:
1. ALL DIMENSIONS ARE FOR REFERENCE ONLY.
2. PACKAGING: ADAPTERS AND DUSTCAPS ARE PACKED IN A PLASTIC TRAY.

| | | |
|--------------------|------------|-----------------|
| ENTER DESCRIPTION | 2009/11/09 | QUALITY SYMBOLS |
| EC NO: MF2010-0212 | 2009/11/11 | ▽=0 |
| DRWN:SERNST | 2009/11/11 | ▽=0 |
| CHKD: SMIGO | 2009/11/11 | |
| APPR: SMIGO | | |
| REV | | |
| A4 | | |

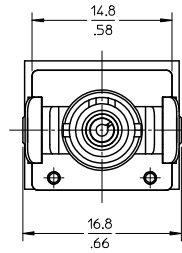
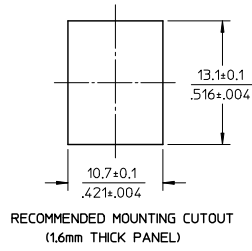
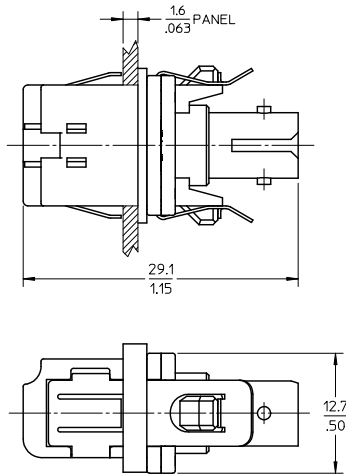
| |
|--|
| GENERAL TOLERANCES (UNLESS SPECIFIED) |
| 4 PLACES ± --- ± --- |
| 3 PLACES ± --- ± --- |
| 2 PLACES ± --- ± --- |
| 1 PLACE ± --- ± --- |
| ANGULAR ± 1 ° |
| DRAFT WHERE APPLICABLE MUST REMAIN WITHIN DIMENSIONS |

| | | | |
|-----------------|---|-----------------------|------------------------|
| DIMENSION STYLE | SCALE | DESIGN UNITS | THIRD ANGLE PROJECTION |
| MM/IN | 2.5:1 | METRIC | |
| DRAWN BY | DATE | TITLE | |
| SERNST | 2006/02/13 | UNIVERSAL EMI ADAPTER | |
| CHECKED BY | DATE | | |
| DSZILAGYI | 2006/03/07 | | |
| APPROVED BY | DATE | | |
| SMIGO | 2006/03/07 | MOLEX INCORPORATED | |
| MATERIAL NO. | DOCUMENT NO. | SHEET NO. | |
| SEE TABLE | SD-106154-001 | 9 OF 10 | |
| SIZE B | THIS DRAWING CONTAINS INFORMATION THAT IS PROPRIETARY TO MOLEX INCORPORATED AND SHOULD NOT BE USED WITHOUT WRITTEN PERMISSION | | |

| | |
|------|------------|
| DATE | 2006/02/13 |
| DATE | 2006/03/07 |
| DATE | 2006/03/07 |
| DATE | 2006/03/07 |

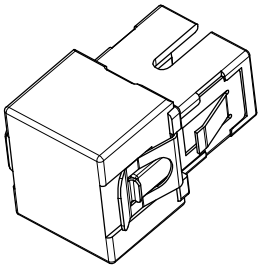
| | |
|---------------|--------------------|
| MOLEX | MOLEX INCORPORATED |
| SD-106154-001 | 9 OF 10 |

| ADAPTER P/N | STYLE | TYPE | SLEEVE MAT'L | MODULE COLOR |
|-------------|-------|----------|--------------|--------------|
| 1061541520 | LC-ST | SM OR MM | NICKEL | BEIGE |

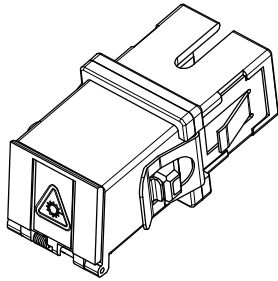


- NOTES:
1. ALL DIMENSIONS ARE FOR REFERENCE ONLY.
 2. PACKAGING: ADAPTERS AND DUSTCAPS ARE PACKED IN A PLASTIC TRAY.

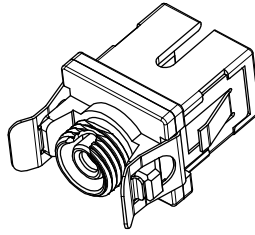
| | | | | | | | | |
|---|-------------------------------|---------------------------------------|------------|---|------------|-----------------------|------------------------|--|
| ENTER DESCRIPTION EC NO: MF2010-0212 DRAWN: SERNST CHKD: 2009/11/11 APPR: SMIGO 2009/11/09 2009/11/11 2009/11/11 | QUALITY SYMBOLS ▽=0 ▽=0 | GENERAL TOLERANCES (UNLESS SPECIFIED) | | DIMENSION STYLE | SCALE | DESIGN UNITS | THIRD ANGLE PROJECTION | |
| | | mm | INCH | MM/IN | 2.5:1 | METRIC | ☑ | |
| | | 4 PLACES ± --- ± --- | | DRAWN BY | DATE | TITLE | | |
| | | 3 PLACES ± --- ± --- | | SERNST | 2006/02/13 | UNIVERSAL EMI ADAPTER | | |
| 2 PLACES ± --- ± --- | | CHECKED BY | DATE | MOLEX INCORPORATED DOCUMENT NO. SD-106154-001 SHEET NO. 10 OF 10 | | | | |
| 1 PLACE ± --- ± --- | | DSZILAGYI | 2006/03/07 | | | | | |
| ANGULAR ± 1 ° | | APPROVED BY | DATE | THIS DRAWING CONTAINS INFORMATION THAT IS PROPRIETARY TO MOLEX INCORPORATED AND SHOULD NOT BE USED WITHOUT WRITTEN PERMISSION | | | | |
| DRAFT WHERE APPLICABLE MUST REMAIN WITHIN DIMENSIONS | | MATERIAL NO. | DATE | | | | | |
| A4 | | SEE TABLE | 2006/03/07 | | | | | |
| REV | | SIZE | | | | | | |



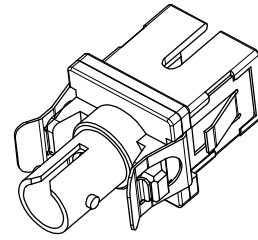
SHOWN WITH DUST CAP
INSTALLED (NO MODULE)



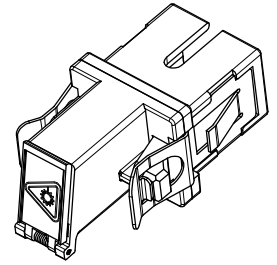
SC-SC VERSIONS
SEE SHEET 3



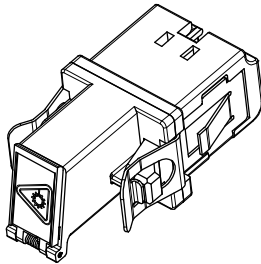
SC-FC VERSIONS
SEE SHEET 4



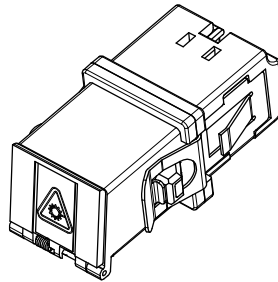
SC-ST VERSIONS
SEE SHEET 5



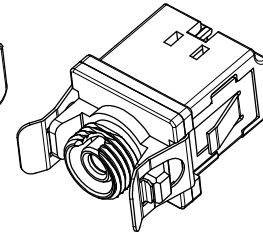
SC-LC VERSION
SEE SHEET 6



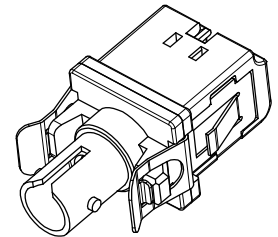
LC-LC VERSIONS
SEE SHEET 7



LC-SC VERSION
SEE SHEET 8



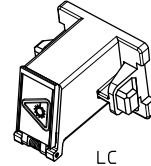
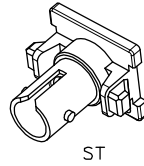
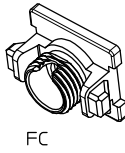
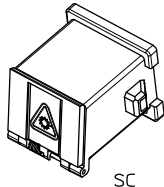
LC-FC VERSION
SEE SHEET 9



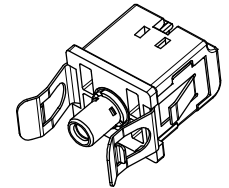
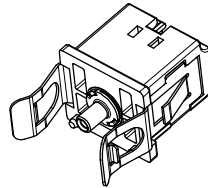
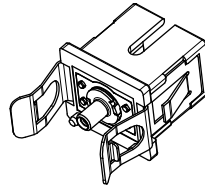
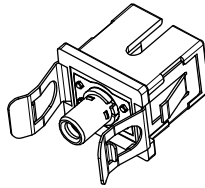
LC-ST VERSION
SEE SHEET 10

| | | | | | | | | | |
|--|-------------------------------|--|-------------------------|--------------------------|----------------------------|-------------------------------|---------------------------|--|--|
| ENTER DESCRIPTION EC NO: MF-2008-0308 DRAWN: PEVZNER CHKD: 2008/02/07 APPR: GUMIN 2008/02/14 | QUALITY SYMBOLS ▽=0 ▽=0 | GENERAL TOLERANCES (UNLESS SPECIFIED) | | DIMENSION STYLE MM/IN | SCALE 2.5:1 | DESIGN UNITS METRIC | THIRD ANGLE PROJECTION | | |
| | | 4 PLACES ± --- ± --- | DRAWN BY SERNST | DATE 2006/02/13 | TITLE UNIVERSAL ADAPTER | | | | |
| | | 3 PLACES ± --- ± --- | CHECKED BY DSZILAGYI | DATE 2006/03/07 | MOLEX INCORPORATED | | | | |
| | | 2 PLACES ± --- ± --- 1 PLACE ± --- ± --- | APPROVED BY SMIGO | DATE 2006/03/07 | MATERIAL NO. SEE TABLES | DOCUMENT NO. SD-106154-002 | SHEET NO. 1 OF 10 | | |
| DRAFT WHERE APPLICABLE MUST REMAIN WITHIN DIMENSIONS | | THIS DRAWING CONTAINS INFORMATION THAT IS PROPRIETARY TO MOLEX INCORPORATED AND SHOULD NOT BE USED WITHOUT WRITTEN PERMISSION | | | | | | | |

| MODULE P/N | TYPE | COLOR |
|------------|------|-------|
| 1061540020 | SC | BLUE |
| 1061540022 | | BEIGE |
| 1061540025 | | GREEN |
| 1061540031 | FC | BLUE |
| 1061540033 | | BEIGE |
| 1061540036 | | GREEN |
| 1061540041 | ST | BLUE |
| 1061540043 | | BEIGE |
| 1061540130 | LC | BLUE |
| 1061540131 | | BEIGE |
| 1061540132 | | GREEN |



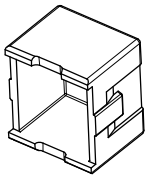
| BASE P/N | TYPE | SLEEVE MAT'L | TYPE |
|------------|-------------|--------------|-------------------|
| 1061540015 | SINGLE MODE | ZIRCONIA | SC BASE TO 2.5mm |
| 1061540016 | MULTIMODE | PHOS BRONZE | SC BASE TO 1.25mm |
| 1061540017 | SM/MM | NICKEL | LC BASE TO 1.25mm |
| 1061540215 | SINGLE MODE | ZIRCONIA | LC BASE TO 1.25mm |
| 1061540216 | MULTIMODE | PHOS BRONZE | LC BASE TO 1.25mm |
| 1061540217 | SM/MM | NICKEL | LC BASE TO 2.5mm |



| SLEEVE ASBY | TYPE | SLEEVE MAT'L | TYPE |
|-------------|-------------|--------------|-------------------------|
| 1061540050 | SINGLE MODE | ZIRCONIA | 2.5mm |
| 1061540051 | MULTIMODE | PHOS BRONZE | 1.25mm |
| 1061540052 | SINGLE MODE | ZIRCONIA | |
| 1061540053 | MULTIMODE | PHOS BRONZE | |
| 1061540054 | SM/MM | NICKEL | HYBRID 1.25 TO 2.5mm |



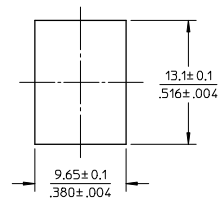
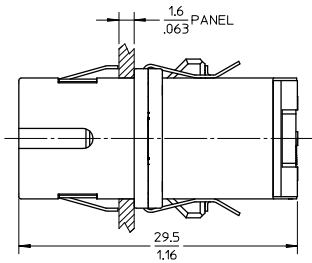
DUST CAP
P/N 1061540006



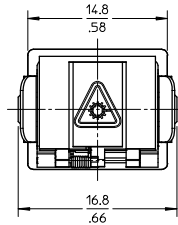
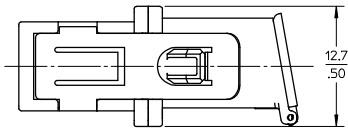
| | | | | | | | |
|---|-----------------|--|---|------------|-------------------|------------------------|--|
| ENTER DESCRIPTION EC NO: MF2008-0308 DRAWN BY: ZNER CHKD: 2008/02/07 APPR: LGUMIN 2008/02/14 A3 | QUALITY SYMBOLS | GENERAL TOLERANCES (UNLESS SPECIFIED) mm INCH 4 PLACES ± --- ± --- 3 PLACES ± --- ± --- 2 PLACES ± --- ± --- 1 PLACE ± --- ± --- ANGULAR ± 1 ° | DIMENSION STYLE | SCALE | DESIGN UNITS | THIRD ANGLE PROJECTION | |
| | ▼=0 ▽=0 | | MM/IN | 2:1 | METRIC | | |
| | | | DRAWN BY | DATE | TITLE | | |
| | | | SERNST | 2006/02/13 | UNIVERSAL ADAPTER | | |
| | CHECKED BY | DATE | MATERIAL NO. | | | | |
| | DSZILAGYI | 2006/03/07 | SEE TABLES | | | | |
| | APPROVED BY | DATE | DOCUMENT NO. | | | | |
| | SMIGO | 2006/03/07 | SD-106154-002 | | | | |
| | | | SHEET NO. | | | | |
| | | | 2 OF 10 | | | | |
| | | | THIS DRAWING CONTAINS INFORMATION THAT IS PROPRIETARY TO MOLEX INCORPORATED AND SHOULD NOT BE USED WITHOUT WRITTEN PERMISSION | | | | |

10 9 8 7 6 5 4 3 2 106154

| ADAPTER P/N | STYLE | TYPE | SLEEVE MAT'L | MODULE COLOR |
|-------------|-----------|-------------|-----------------|--------------|
| 1061541100 | SC-SC | SINGLE MODE | ZIRCONIA | BLUE |
| 1061541105 | SC-SC/APC | | | GREEN |
| 1061541101 | SC-SC | MULTIMODE | PHOSPHOR BRONZE | BEIGE |



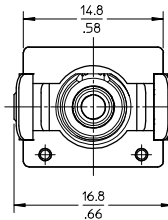
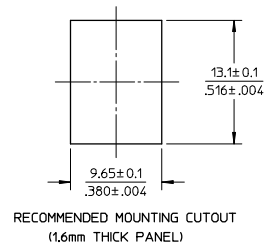
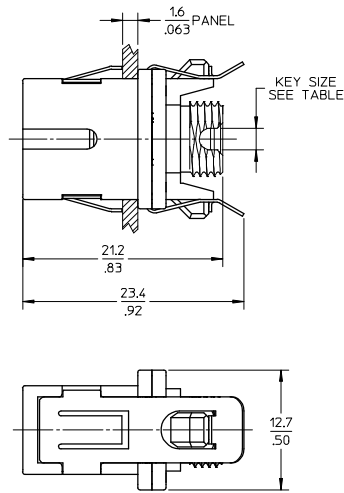
RECOMMENDED MOUNTING CUTOUT
(1.6mm THICK PANEL)



NOTES:
 1. ALL DIMENSIONS ARE FOR REFERENCE ONLY.
 2. PACKAGING: ADAPTERS AND DUSTCAPS ARE PACKED IN A PLASTIC TRAY.

| | | | | | | |
|---|--|--|---|-------|--|---|
| ENTER DESCRIPTION EC NO: MF2008-0308 DRAWN BY: DRWAHPEVZNER CHKD: 2008/02/07 APPR: LGUMIN 2008/02/14 REV: A3 | QUALITY SYMBOLS | GENERAL TOLERANCES (UNLESS SPECIFIED) | DIMENSION STYLE | SCALE | DESIGN UNITS | THIRD ANGLE PROJECTION |
| | ▽=0 ▽=0 | mm INCH 4 PLACES ± --- ± --- 3 PLACES ± --- ± --- 2 PLACES ± --- ± --- 1 PLACE ± --- ± --- ANGULAR ± 1 ° | MM/IN | 2.5:1 | METRIC | DRAWN BY: SERNST DATE: 2006/02/13 CHECKED BY: DSZILAGYI DATE: 2006/03/07 APPROVED BY: SMIGO DATE: 2006/03/07 |
| | DRAFT WHERE APPLICABLE MUST REMAIN WITHIN DIMENSIONS | SEE TABLE | TITLE: UNIVERSAL ADAPTER | | MOLEX INCORPORATED DOCUMENT NO. SD-106154-002 | |
| | | SIZE B | THIS DRAWING CONTAINS INFORMATION THAT IS PROPRIETARY TO MOLEX INCORPORATED AND SHOULD NOT BE USED WITHOUT WRITTEN PERMISSION | | SHEET NO. 3 OF 10 | |

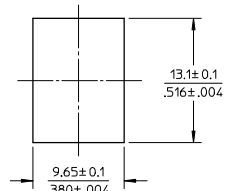
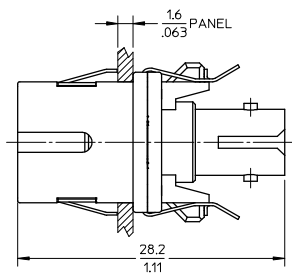
| ADAPTER P/N | STYLE | TYPE | SLEEVE MAT'L | MODULE COLOR | KEY SIZE (mm) |
|-------------|-----------|-------------|-----------------|--------------|---------------|
| 1061541110 | SC-FC | SINGLE MODE | ZIRCONIA | BLUE | 2.3 |
| 1061541115 | SC-FC/APC | | | GREEN | 2 |
| 1061541111 | SC-FC | MULTIMODE | PHOSPHOR BRONZE | BEIGE | 2.3 |



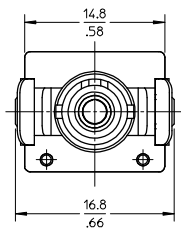
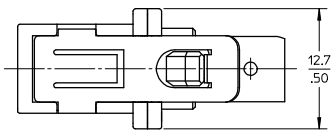
- NOTES:
1. ALL DIMENSIONS ARE FOR REFERENCE ONLY.
2. PACKAGING: ADAPTERS AND DUSTCAPS ARE PACKED IN A PLASTIC TRAY.

| | | | | | | | |
|---|-------------------------------|---|------------------------------------|--------------------------|-------------------------------|------------------------|------------------------|
| ENTER DESCRIPTION EC NO: MF2008-0308 DRAWN BY: DRW:WPEZNER CHKD: 2008/02/07 APPR: LGUMIN 2008/02/14 | QUALITY SYMBOLS ▽=0 ▽=0 | GENERAL TOLERANCES (UNLESS SPECIFIED) | | DIMENSION STYLE MM/IN | SCALE 2.5:1 | DESIGN UNITS METRIC | THIRD ANGLE PROJECTION |
| | | 4 PLACES ± --- ± --- 3 PLACES ± --- ± --- 2 PLACES ± --- ± --- 1 PLACE ± --- ± --- | DRAWN BY SERNST 2006/02/13 | DATE 2006/02/13 | TITLE UNIVERSAL ADAPTER | | |
| | | ANGULAR ± 1 ° | CHECKED BY DSZILAGYI 2006/03/07 | DATE 2006/03/07 | MOLEX INCORPORATED | | |
| | | DRAFT WHERE APPLICABLE MUST REMAIN WITHIN DIMENSIONS | MATERIAL NO. SEE TABLE | DATE 2006/03/07 | DOCUMENT NO. SD-106154-002 | SHEET NO. 4 OF 10 | |

| ADAPTER P/N | STYLE | TYPE | SLEEVE MAT'L |
|-------------|-------|-------------|--------------|
| 1061541120 | SC-ST | SINGLE MODE | ZIRCONIA |
| 1061541121 | | MULTIMODE | PHOS BRONZE |



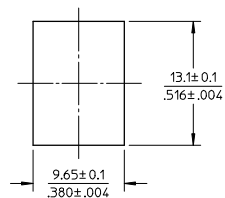
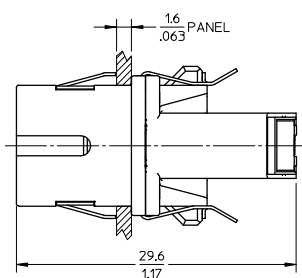
RECOMMENDED MOUNTING CUTOUT
(1.6mm THICK PANEL)



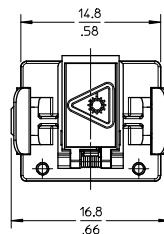
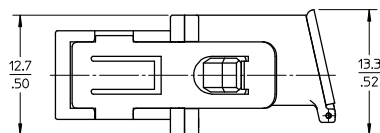
NOTES:
 1. ALL DIMENSIONS ARE FOR REFERENCE ONLY.
 2. PACKAGING: ADAPTERS AND DUSTCAPS ARE PACKED IN A PLASTIC TRAY.

| | | | | | | | | | |
|--|-------------------------------|---|--|---|--|--------------------------------------|------------------------|------------------------|--|
| ENTER DESCRIPTION EC NO: MF2008-0308 DRAWN BY: DRWAHPELZNER CHKD: 2008/02/07 APPR: LGUMIN 2008/02/14 | QUALITY SYMBOLS ▽=0 ▽=0 | GENERAL TOLERANCES (UNLESS SPECIFIED) | | DIMENSION STYLE MM/IN | | SCALE 2.5:1 | DESIGN UNITS METRIC | THIRD ANGLE PROJECTION | |
| | | mm INCH | | DRAWN BY DATE SERNST 2006/02/13 | | TITLE UNIVERSAL ADAPTER | | | |
| | | 4 PLACES ± --- ± --- 3 PLACES ± --- ± --- 2 PLACES ± --- ± --- 1 PLACE ± --- ± --- | | CHECKED BY DATE DSZILAGYI 2006/03/07 | | APPROVED BY DATE SMIGO 2006/03/07 | | | |
| | | ANGULAR ± 1 ° | | MATERIAL NO. SEE TABLE | | DOCUMENT NO. SD-106154-002 | | SHEET NO. 5 OF 10 | |
| DRAFT WHERE APPLICABLE MUST REMAIN WITHIN DIMENSIONS | | THIS DRAWING CONTAINS INFORMATION THAT IS PROPRIETARY TO MOLEX INCORPORATED AND SHOULD NOT BE USED WITHOUT WRITTEN PERMISSION | | | | | | | |

| ADAPTER P/N | STYLE | TYPE | SLEEVE MAT'L |
|-------------|-------|----------|--------------|
| 1061541130 | SC-LC | SM OR MM | NICKEL |



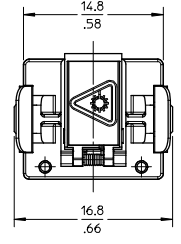
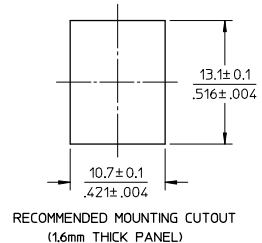
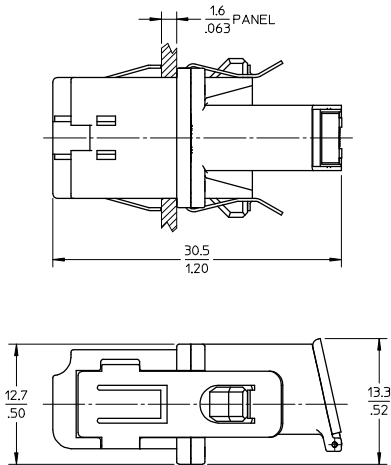
RECOMMENDED MOUNTING CUTOUT
(1.6mm THICK PANEL)



NOTES:
1. ALL DIMENSIONS ARE FOR REFERENCE ONLY.
2. PACKAGING: ADAPTERS AND DUSTCAPS ARE PACKED IN A PLASTIC TRAY.

| | | | | | | |
|---|-----------------|--|-----------------|---|--------------|---|
| ENTER DESCRIPTION EC NO: MF2008-0308 DRAWN BY: DRW:WAPZVNER CHKD: 2008/02/07 APPR: LGUMIN 2008/02/14 REV: A3 | QUALITY SYMBOLS | GENERAL TOLERANCES (UNLESS SPECIFIED) | DIMENSION STYLE | SCALE | DESIGN UNITS | THIRD ANGLE PROJECTION |
| | ▽=0 ▽=0 | mm INCH 4 PLACES ± --- ± --- 3 PLACES ± --- ± --- 2 PLACES ± --- ± --- 1 PLACE ± --- ± --- ANGULAR ± 1 ° | MM/IN | 2.5:1 | METRIC | DRAWN BY: SERNST DATE: 2006/02/13 CHECKED BY: DSZILAGYI DATE: 2006/03/07 APPROVED BY: SMIGO DATE: 2006/03/07 |
| | | DRAFT WHERE APPLICABLE MUST REMAIN WITHIN DIMENSIONS | SEE TABLE | TITLE: UNIVERSAL ADAPTER MOLEX INCORPORATED DOCUMENT NO. SD-106154-002 SHEET NO. 6 OF 10 | | |
| | | | | THIS DRAWING CONTAINS INFORMATION THAT IS PROPRIETARY TO MOLEX INCORPORATED AND SHOULD NOT BE USED WITHOUT WRITTEN PERMISSION | | |

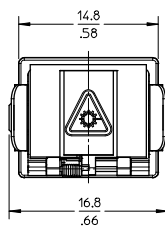
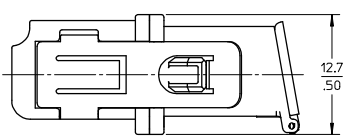
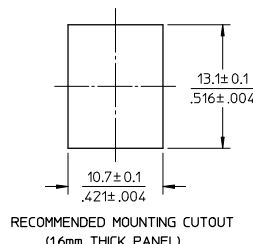
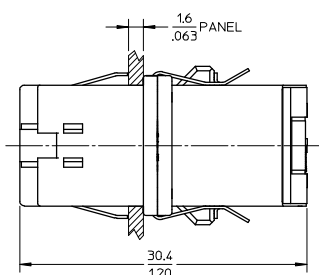
| ADAPTER P/N | STYLE | TYPE | SLEEVE MAT'L | MODULE COLOR |
|-------------|-----------|-------------|-----------------|--------------|
| 1061541630 | LC-LC | SINGLE MODE | ZIRCONIA | BLUE |
| 1061541635 | LC-LC/APC | | | GREEN |
| 1061541631 | LC-LC | MULTIMODE | PHOSPHOR BRONZE | BEIGE |



NOTES:
 1. ALL DIMENSIONS ARE FOR REFERENCE ONLY.
 2. PACKAGING: ADAPTERS AND DUSTCAPS ARE PACKED IN A PLASTIC TRAY.

| | | | | | | | |
|--|-----------------|--|-----------------|------------|-------------------|------------------------|--|
| ENTER DESCRIPTION EC NO: MF2008-0308 DRAWN BY: DRW/HAPELZNER CHKD: 2008/02/07 APPR: LGUMIN 2008/02/14 REV: A3 | QUALITY SYMBOLS | GENERAL TOLERANCES (UNLESS SPECIFIED) mm INCH 4 PLACES ± --- ± --- 3 PLACES ± --- ± --- 2 PLACES ± --- ± --- 1 PLACE ± --- ± --- ANGULAR ± 1 ° DRAFT WHERE APPLICABLE MUST REMAIN WITHIN DIMENSIONS | DIMENSION STYLE | SCALE | DESIGN UNITS | THIRD ANGLE PROJECTION | |
| | ▽=0 ▽=0 | | MM/IN | 2.5:1 | METRIC | | |
| | | | DRAWN BY | DATE | TITLE | | |
| | | | SERNST | 2006/02/13 | UNIVERSAL ADAPTER | | |
| | CHECKED BY | DATE | MATERIAL NO. | | | | |
| | DSZILAGYI | 2006/03/07 | SEE TABLE | | | | |
| | APPROVED BY | DATE | DOCUMENT NO. | | | | |
| | SMIGO | 2006/03/07 | SD-106154-002 | | | | |
| | | | SHEET NO. | | | | |
| | | | 7 OF 10 | | | | |

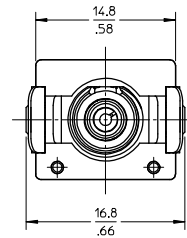
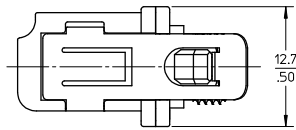
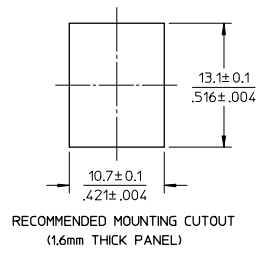
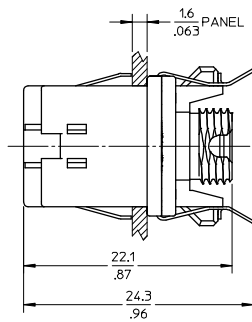
| ADAPTER P/N | STYLE | TYPE | SLEEVE MAT'L |
|-------------|-------|----------|--------------|
| 1061541600 | LC-SC | SM OR MM | NICKEL |



NOTES:
1. ALL DIMENSIONS ARE FOR REFERENCE ONLY.
2. PACKAGING: ADAPTERS AND DUSTCAPS ARE PACKED IN A PLASTIC TRAY.

| | | | | | | | |
|--|-----------------|--|-----------------|---|-------------------|------------------------|--|
| ENTER DESCRIPTION EC NO: MF2008-0308 DRAWN BY: DRW/HAPELZNER CHKD: 2008/02/07 APPR: LGUMIN 2008/02/14 REV: A3 | QUALITY SYMBOLS | GENERAL TOLERANCES (UNLESS SPECIFIED) mm INCH 4 PLACES ± --- ± --- 3 PLACES ± --- ± --- 2 PLACES ± --- ± --- 1 PLACE ± --- ± --- ANGULAR ± 1 ° | DIMENSION STYLE | SCALE | DESIGN UNITS | THIRD ANGLE PROJECTION | |
| | ▽=0 ▽=0 | | MM/IN | 2.5:1 | METRIC | | |
| | | | DRAWN BY | DATE | TITLE | | |
| | | | SERNST | 2006/02/13 | UNIVERSAL ADAPTER | | |
| | | CHECKED BY | DATE | MATERIAL NO. | | | |
| | | DSZILAGYI | 2006/03/07 | SD-106154-002 | | | |
| | | APPROVED BY | DATE | DOCUMENT NO. | | | |
| | | SMIGO | 2006/03/07 | SHEET NO. | | | |
| | | | | 8 OF 10 | | | |
| | | DRAFT WHERE APPLICABLE MUST REMAIN WITHIN DIMENSIONS | SIZE | THIS DRAWING CONTAINS INFORMATION THAT IS PROPRIETARY TO MOLEX INCORPORATED AND SHOULD NOT BE USED WITHOUT WRITTEN PERMISSION | | | |
| | | | B | | | | |

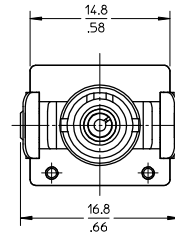
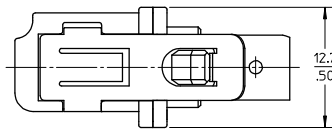
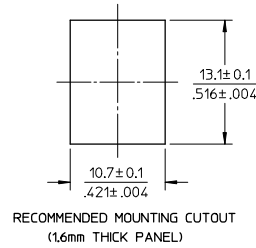
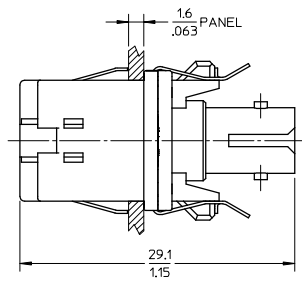
| ADAPTER P/N | STYLE | TYPE | SLEEVE MAT'L |
|-------------|-------|----------|--------------|
| 1061541610 | LC-FC | SM OR MM | NICKEL |



NOTES:
 1. ALL DIMENSIONS ARE FOR REFERENCE ONLY.
 2. PACKAGING: ADAPTERS AND DUSTCAPS ARE PACKED IN A PLASTIC TRAY.

| | | | | | | | |
|---|-----------------|---|-----------------|--------------|-------------------|------------------------|--|
| ENTER DESCRIPTION EC NO: MF2008-0308 DRAWN BY: DRWAHPEVZNER CHKD: 2008/02/07 APPR: LGUMIN 2008/02/14 REV: A3 | QUALITY SYMBOLS | GENERAL TOLERANCES (UNLESS SPECIFIED) 4 PLACES ± --- ± --- 3 PLACES ± --- ± --- 2 PLACES ± --- ± --- 1 PLACE ± --- ± --- ANGULAR ± 1 ° | DIMENSION STYLE | SCALE | DESIGN UNITS | THIRD ANGLE PROJECTION | |
| | ▽=0 | | MM/IN | 2.5:1 | METRIC | | |
| | ▽=0 | | DRAWN BY | DATE | TITLE | | |
| | | | SERNST | 2006/02/13 | UNIVERSAL ADAPTER | | |
| | | CHECKED BY | DATE | MATERIAL NO. | | | |
| | | DSZILAGYI | 2006/03/07 | DOCUMENT NO. | | | |
| | | APPROVED BY | DATE | SHEET NO. | | | |
| | | SMIGO | 2006/03/07 | 9 OF 10 | | | |
| | | DRAFT WHERE APPLICABLE MUST REMAIN WITHIN DIMENSIONS | | SEE TABLE | | SD-106154-002 | |
| | | THIS DRAWING CONTAINS INFORMATION THAT IS PROPRIETARY TO MOLEX INCORPORATED AND SHOULD NOT BE USED WITHOUT WRITTEN PERMISSION | | | | | |

| ADAPTER P/N | STYLE | TYPE | SLEEVE MAT'L |
|-------------|-------|----------|--------------|
| 1061541620 | LC-ST | SM OR MM | NICKEL |



NOTES:
1. ALL DIMENSIONS ARE FOR REFERENCE ONLY.
2. PACKAGING: ADAPTERS AND DUSTCAPS ARE PACKED IN A PLASTIC TRAY.

| ENTER DESCRIPTION EC NO: MF2008-0308 DRAWN: PEVZNER CHKD: 2008/02/07 APPR: LGUMIN 2008/02/14 A3 | QUALITY SYMBOLS ▽=0 ▽=0 | GENERAL TOLERANCES (UNLESS SPECIFIED) <table border="1"> <tr> <th></th> <th>mm</th> <th>INCH</th> </tr> <tr> <td>4 PLACES</td> <td>± .15</td> <td>± .005</td> </tr> <tr> <td>3 PLACES</td> <td>± .10</td> <td>± .004</td> </tr> <tr> <td>2 PLACES</td> <td>± .075</td> <td>± .003</td> </tr> <tr> <td>1 PLACE</td> <td>± .05</td> <td>± .002</td> </tr> </table> | | mm | INCH | 4 PLACES | ± .15 | ± .005 | 3 PLACES | ± .10 | ± .004 | 2 PLACES | ± .075 | ± .003 | 1 PLACE | ± .05 | ± .002 | DIMENSION STYLE MM/IN | SCALE 2.5:1 | DESIGN UNITS METRIC | THIRD ANGLE PROJECTION |
|--|--|---|----------------------------|----|------|----------|-------|--------|----------|-------|--------|----------|--------|--------|---------|-------|--------|--------------------------|----------------|------------------------|------------------------|
| | | mm | INCH | | | | | | | | | | | | | | | | | | |
| | 4 PLACES | ± .15 | ± .005 | | | | | | | | | | | | | | | | | | |
| | 3 PLACES | ± .10 | ± .004 | | | | | | | | | | | | | | | | | | |
| 2 PLACES | ± .075 | ± .003 | | | | | | | | | | | | | | | | | | | |
| 1 PLACE | ± .05 | ± .002 | | | | | | | | | | | | | | | | | | | |
| DRAFT WHERE APPLICABLE MUST REMAIN WITHIN DIMENSIONS | DRAWN BY SERNST DATE 2006/02/13 | CHECKED BY DSZILAGYI DATE 2006/03/07 | TITLE UNIVERSAL ADAPTER | | | | | | | | | | | | | | | | | | |
| | APPROVED BY SMIGO DATE 2006/03/07 | MATERIAL NO. SEE TABLE | MOLEX INCORPORATED | | | | | | | | | | | | | | | | | | |
| | | DOCUMENT NO. SD-106154-002 | SHEET NO. 10 OF 10 | | | | | | | | | | | | | | | | | | |