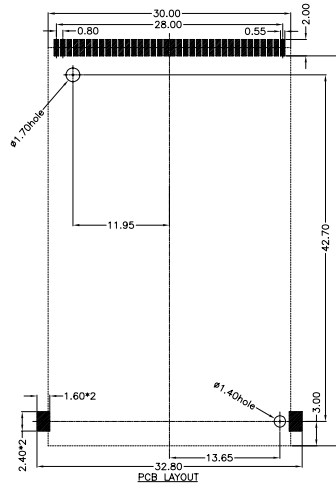
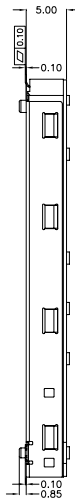
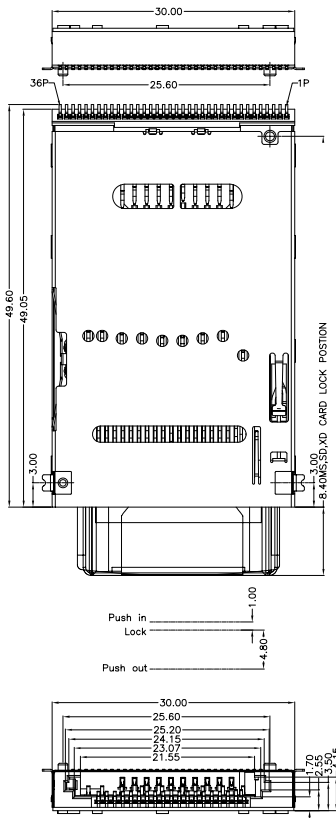




Part Number:101-00415-**
4IN1 (P-P) Conn. Bottom mount even PCB type
(SD, MMC, MS, XD)

- Push-push eject type
- SMT
- Application for notebook computers, card readers

- 1.Materials:
 Housing: High temperature thermoplastic, UL 94V-0 rated.
 Contact: Copper alloy
 Cover: SUS304
- 2.Contact finish:
 Selective 1~15u" gold plating on contact area, tin 160u" plating at solder tail, over nickel plating (50U" min)
- 3.Electrical specifications:
 Voltage Rating: 250VAC
 Current Rating: 0.5A per contact
 Dielectric strength: 500VAC initial and 250VAC final for one minute
 Insulation Resistance: 1000MΩ min at 250VDC
 Contact Resistance: 100mΩ max
 Operating temperature: -20°C~+60°C
- 4.Mechanical specifications:
 Durability: 10000cycles.
 Mating force: 40N max.
 Unmating force: 2N min
- 5.RoHS Compliant



PIN#	XD	MS	SD	PIN#	XD	MS	SD	PIN#	XD	MS	SD
P1	2P			P13	1P&9P	1P&10P	3P&6P	P25	12P		7P
P2	3P			P14		9P		P26	14P		
P3	4P			P15		8P		P27			
P4	5P			P16		7P		P28			
P5	6P			P17		6P		P29			8P
P6	7P			P18		5P		P30	15P		
P7	8P			P19		4P		P31	16P		
P8	10P			P20		3P		P32	17P		
P9	11P			P21		2P		P33	18P		
P10			9P	P22	1P&9P	1P&10P	3P&6P	P34	19P		
P11			1P	P23			4P	P35			WP
P12			2P	P24			5P	P36			CD

