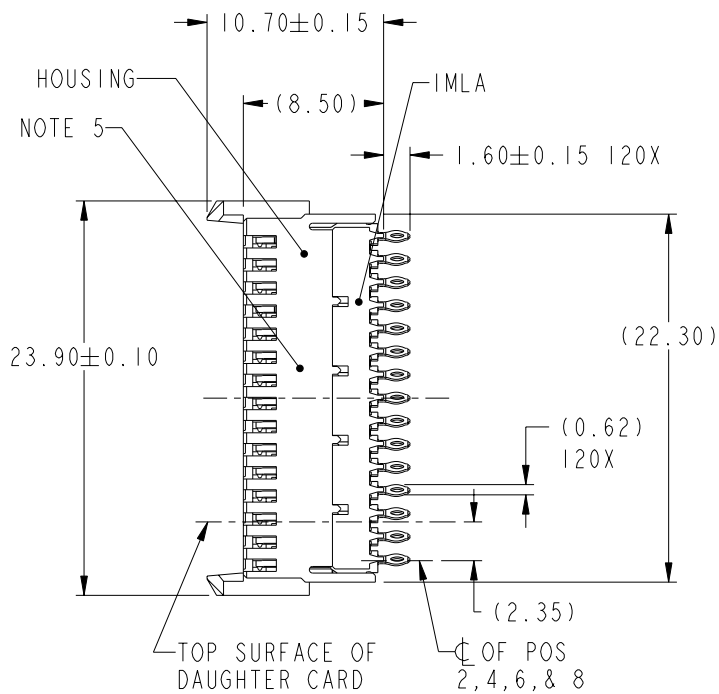
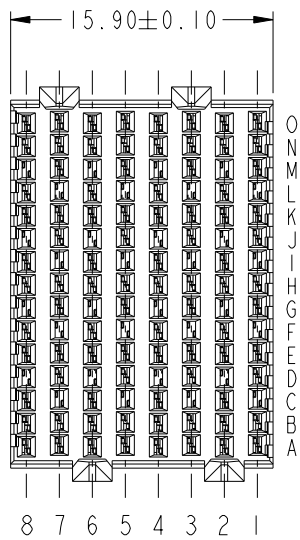


PRODUCT NUMBER
SEE TABLE, SHEET 4

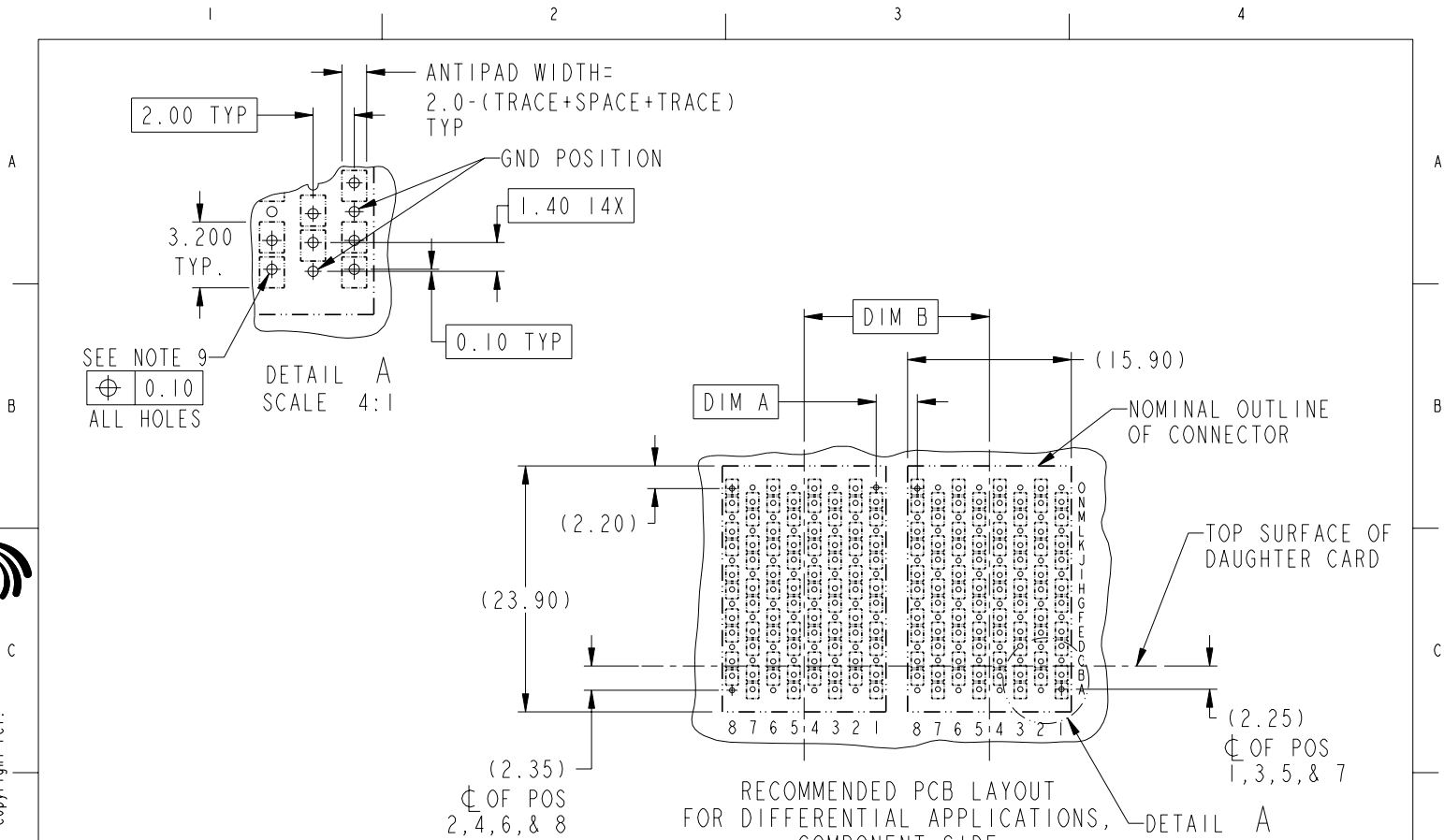


Copyright FCJ.

www.fciconnect.com		surface	tolerance std	projection	MM
		ASME Y14.5	ASME Y14.5		Scale 3:1
		TOLERANCES UNLESS OTHERWISE SPECIFIED		size A4	ECN ***
Dr	T. HOUTZ	2004-06-03	ANGULAR	0.x ±	
Eng	S. MINICH	2004-06-03	LINEAR	0.xx ±	
Chr	C. H TAN	2007-02-08	0° ±	0.xxx ±	
Appr	JOEY NG	2007-02-08	Product family	AirMax VS	Spec ref RELEASED
		AirMax VS VERT RECPT ASSY		part no	10040993
		PRESS-FIT, 120 POSITION, 16mm		Rev.	A
		catalog no		CUSTOMER	sheet 1 of 4

REV F - 2004-04-17

PDM: Rev:A STATUS:Released 4 Printed: Dec 01, 2010



RECOMMENDED PCB LAYOUT FOR DIFFERENTIAL APPLICATIONS, COMPONENT SIDE (TWO ADJACENT FOOTPRINTS SHOWN) NOTES 6 & 7

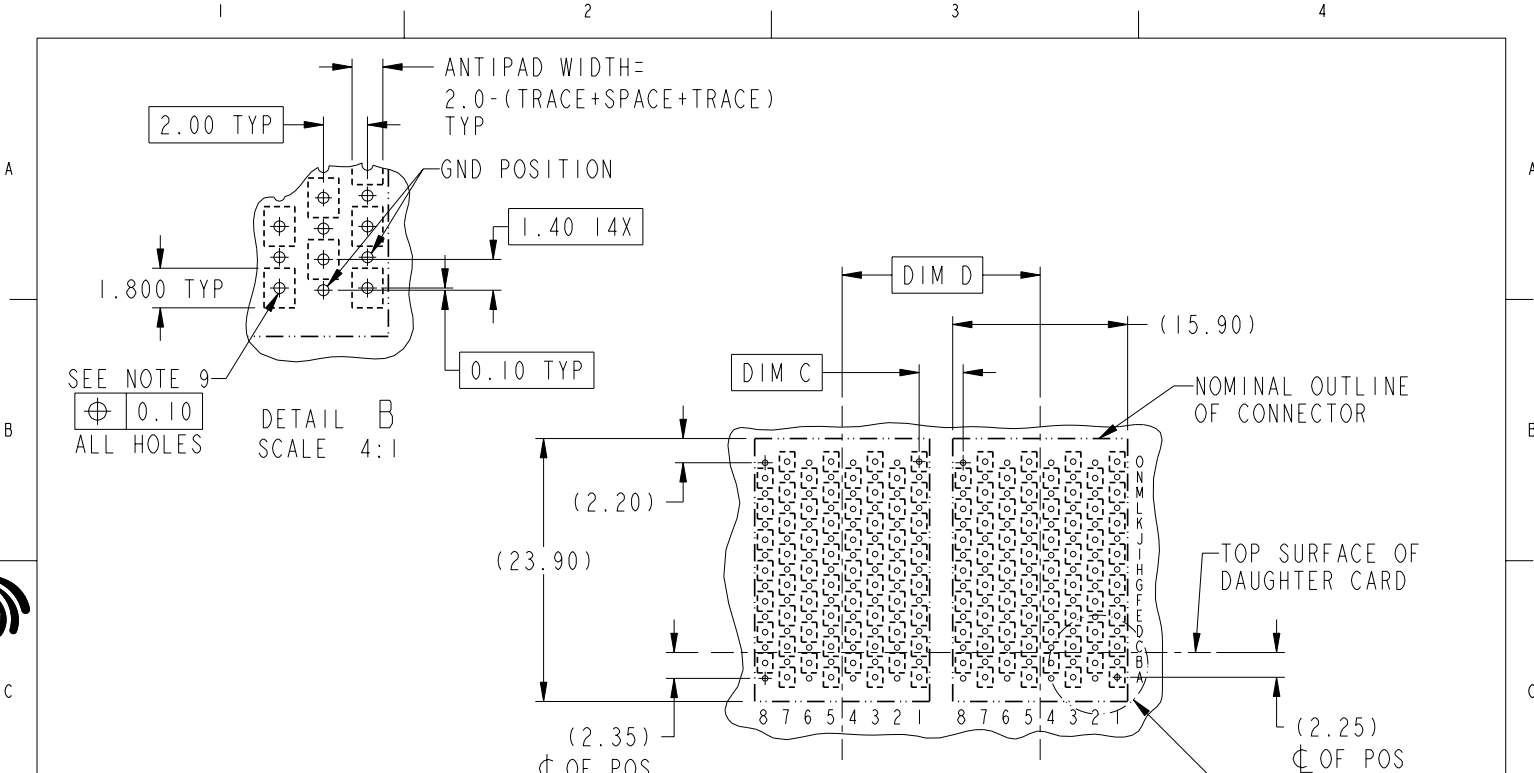
ADJACENT HEADER WIDTHS	DIM A	DIM B
16MM/16MM	2.00	16.00
18MM/18MM	4.00	18.00
16MM/18MM	3.00	17.00

	FCJ	title AirMax VS VERT RECPT ASSY PRESS-FIT, 120 POSITION, 16mm	drwg no 10040993	Rev. A
	catalog no -	CUSTOMER	sheet 2 of 4	

Copyright FCI.



Copyright FCJ.



RECOMMENDED PCB LAYOUT
FOR SINGLE ENDED APPLICATIONS,
COMPONENT SIDE
(TWO ADJACENT FOOTPRINTS SHOWN)
NOTES 6 & 7

ADJACENT HEADER WIDTHS	DIM C	DIM D
16MM/16MM	2.00	16.00
18MM/18MM	4.00	18.00
16MM/18MM	3.00	17.00

	title AirMax VS VERT RECPT ASSY PRESS-FIT, 120 POSITION, 16mm	dwg no 10040993	Rev. A
	catalog no -	CUSTOMER	sheet 3 of 4

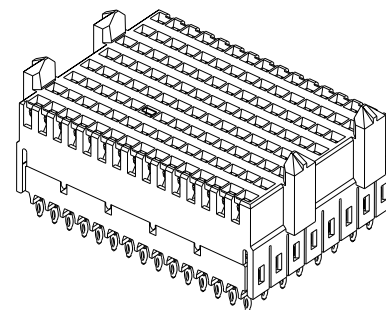
REV F - 2000-04-17

PART NUMBER	PRESS-FIT TAIL PLATING TYPE
10040993-101	TIN/LEAD ALLOY OVER NICKEL
10040993-101LF	TIN OVER NICKEL (LEAD FREE)

NOTES:

1. CONNECTOR MATERIALS:
HOUSING & RETAINER: HIGH TEMP THERMOPLASTIC, NATURAL, UL94V-0
IMLA PLASTIC: HIGH TEMP THERMOPLASTIC, BLACK, UL94V-0
CONTACT: COPPER ALLOY
2. CONTACT PLATING:
SEPARABLE INTERFACE: PERFORMANCE-BASED PLATING, QUALIFIED TO MEET
THE REQUIREMENTS OF FCI PRODUCT SPECIFICATION GS-12-239, INCLUDING
TELCORDIA GR-1217-CORE (November 1995) CENTRAL OFFICE TEST SEQUENCE.

PRESS-FIT TAILS: SEE TABLE
3. PRODUCT SPECIFICATION: GS-12-239
4. APPLICATION SPECIFICATION: GS-20-035
5. PRODUCT MARKING, (PART NUMBER & LOT CODE), ON THIS SURFACE
6. REFER TO CUSTOMER DRAWING 10035911 FOR INFORMATION REGARDING
PCB LAYOUT OF POWER AND GUIDE MODULES RELATIVE TO SIGNAL MODULES
7. POSITIONS F & L OF ODD NUMBERED COLUMNS AND POSITIONS G & M
OF EVEN NUMBERED COLUMNS CORRESPOND TO EARLY MATE HEADER PINS
8. THERE IS NO GROUND BUSSING WITHIN THE CONNECTOR SYSTEM
9. REFER TO CUSTOMER DRAWING 10045979 FOR INFORMATION ON PCB HOLE
DIAMETERS AND PLATING OPTIONS.
10. THIS PRODUCT MEETS EUROPEAN UNION DIRECTIVES AND OTHER COUNTRY
REGULATIONS AS DESCRIBED IN GS-22-008.
11. THE HOUSING WILL WITHSTAND EXPOSURE
TO 260°C PEAK TEMPERATURE FOR 40 SECONDS
IN A CONVECTION, INFRA-RED OR VAPOR PHASE
REFLOW OVEN.
12. PACKAGING MEETS GS-14-920 LEAD FREE
LABELING SPECIFICATION.



FCJ	title	AirMax VS VERT RECPT ASSY	drwg no	10040993	Rev.	A
	catalog no	PRESS-FIT, 120 POSITION, 16mm	-	CUSTOMER	sheet 4 of 4	



Copyright FCI.