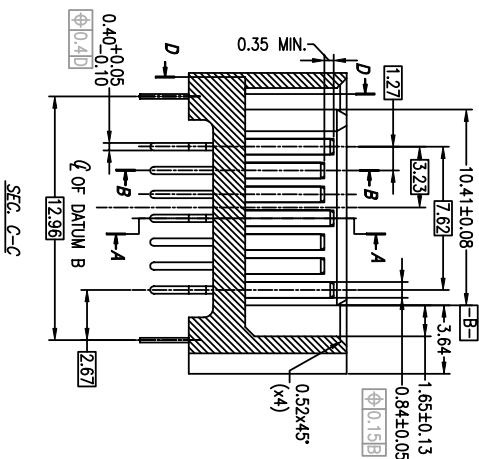
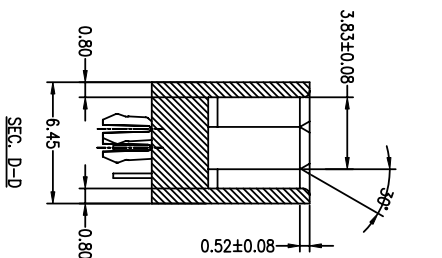
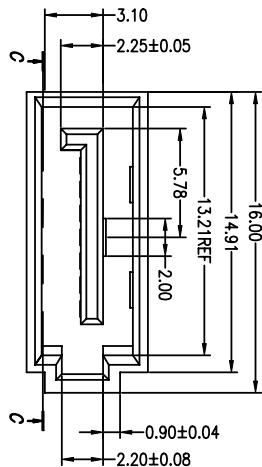
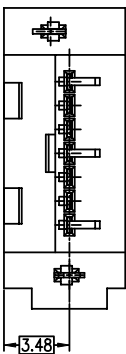
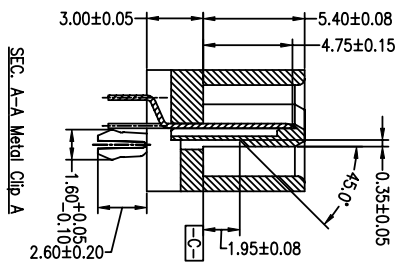
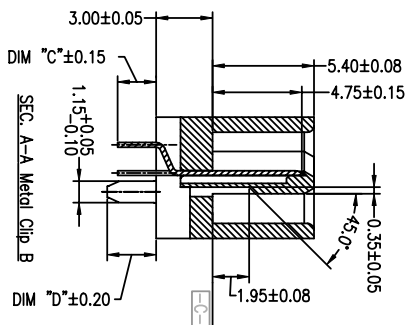
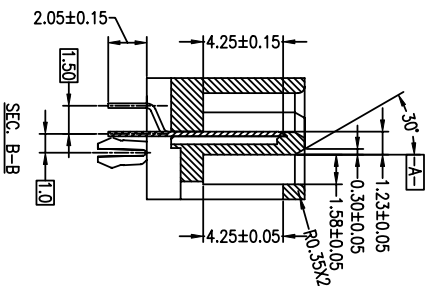




PRODUCT NO.10035690-XXX-4W



SUF-FIX	DIM C	DIM D
OTHERS	2.05MM	2.60MM
-XX4XLF	3.05MM	3.40MM



mat'l. code		tolerances unless otherwise specified		CUSTOMER COPY		FCI		title		product family		code	
lir	ecn no	dr	date	.X ± 0.30		projection		S-ATA SIGNAL PLUG		SATA		TWIN	
A	T05-0213	W.L	09/09/05	.XX ± 0.20		MM		DIP VERTICAL TYPE ASSY		size dng no		2 of	
B	T08-1033	S.Lin	02/29/08	.XXX ± 0.10		NA		www.fciconnect.com		10035690			
		angles		0° ± 2°									
		dr		Wade Liu 09/09/05									
		engr		Wade Liu 09/09/05									
		chr		Wade Liu 09/09/05									
		appd		Sterling Lin 09/09/05									
sheet	revision	sheet	index	B	B	B	B						
				1	2	3							

ACAD

1 | 2

3 |

4

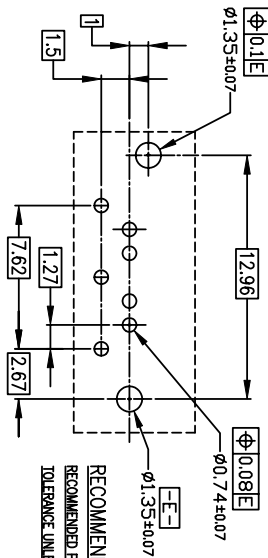
1 | 2

3 |

4



1 | 2



3 |

- 10035690-X-X-X-X-X-X-X-X
- LF: Plating Tin/Lead Free
 - 3W: 3 Wall
 - 4W: 4 Wall
 - 2: Metal clip A WITH 2.05 MM TAIL
 - 3: Metal clip B WITH 2.05 MM TAIL
 - 4: Metal clip B WITH 3.05 MM TAIL (4W ONLY)
- Au thickness of contact point
- 0: 15u" min
 - 2: 3u" min
- Housing Color
- 0: Black

4

NOTES :

1. MATERIAL
 - i) HOUSING : HIGH TEMPERATURE THERMOPLASTIC UL94V-0
 - ii) TERMINAL : COPPER ALLOY
 - iii) HOLD DOWN : COPPER ALLOY
 2. FINISH
 - i) TERMINAL : Au PLATING AT CONTACT POINT
 - 100u" min Sn-Pb or PURE TIN PLATING AT SOLDER TAIL WITH NICKEL UNDERPLATE
 - ii) HOLD DOWN : 100-200 u" Sn-Pb or PURE TIN PLATING.
 3. P/N : 10035690-XXXXLF
- THE HOUSING WILL WITHSTAND EXPOSURE TO 260 DEGREE C PEAK TEMPERATURE FOR 10 SECONDS IN A WAVE SOLDER APPLICATION WITH 1.6MM MINIMUM THICK CIRCUIT BOARD.
4. Packaging spec: GS-14-840.
 5. Product Spec: GS-12-194.

1 | 2

mat'l. code		tolerances unless otherwise specified		CUSTOMER COPY		title	
ltr	ecn no	dr	date	linear	projection	product family	size
A	T05-0213	W.L	09/09/05	.XX ± 0.20	MM	SATA	A4
B	T08-1033	S.Lin	02/29/08	.XXX ± 0.10	MM	SATA	A4
		angles		0° ±2°	MM	SATA	A4
		dr		Wade Liu 09/09/05	MM	SATA	A4
		engr		Wade Liu 09/09/05	MM	SATA	A4
		chr		Wade Liu 09/09/05	MM	SATA	A4
		appd		Sterling Lin 09/09/05	MM	SATA	A4
sheet	revision	B	B	B			
index	sheet	1	2	3			

ACAD

3 |

4