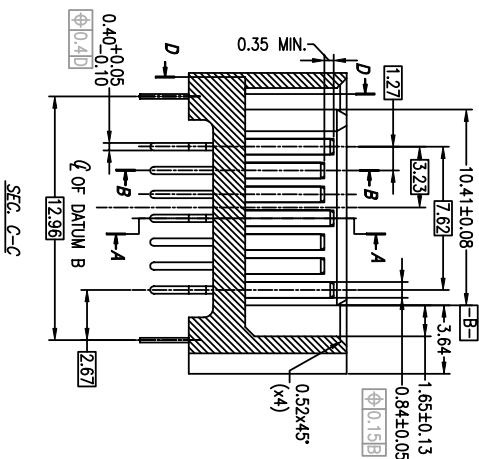
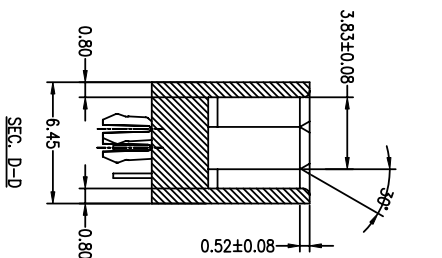
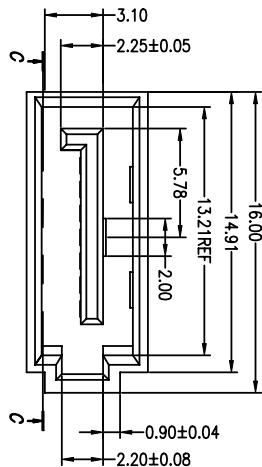


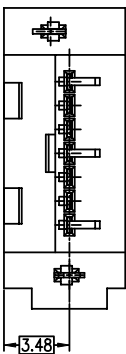
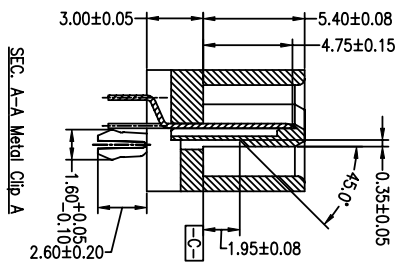
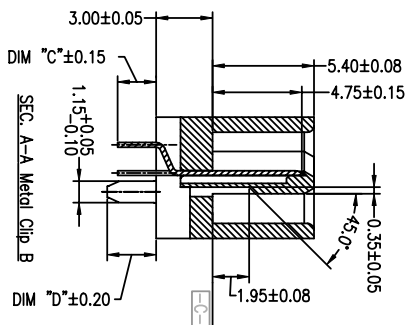
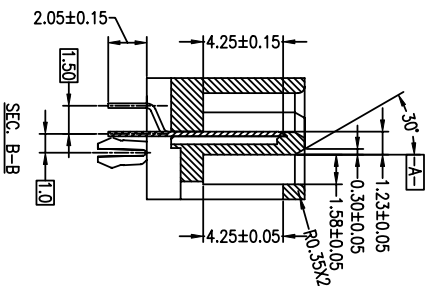




PRODUCT NO.10035690-XXX-4W



SUF-FIX	DIM C	DIM D
OTHERS	2.05MM	2.60MM
-XX4XLF	3.05MM	3.40MM



mat'l. code		tolerances unless otherwise specified		CUSTOMER COPY		FCI		title		product family		code	
lir	ecn no	dr	date	.X ± 0.30		projection		S-ATA SIGNAL PLUG		SATA		TWIN	
A	T05-0213	W.L	09/09/05	.XX ± 0.20		MM		DIP VERTICAL TYPE ASSY		size dng no		2 of	
B	T08-1033	S.Lin	02/29/08	.XXX ± 0.10		NA		www.fciconnect.com		10035690			
		angles		0° ± 2°									
		dr		Wade Liu 09/09/05									
		engr		Wade Liu 09/09/05									
		chr		Wade Liu 09/09/05									
		appd		Sterling Lin 09/09/05									
sheet	revision	sheet	index	B	B	B	B						
				1	2	3							

ACAD

1 | 2

3 |

4

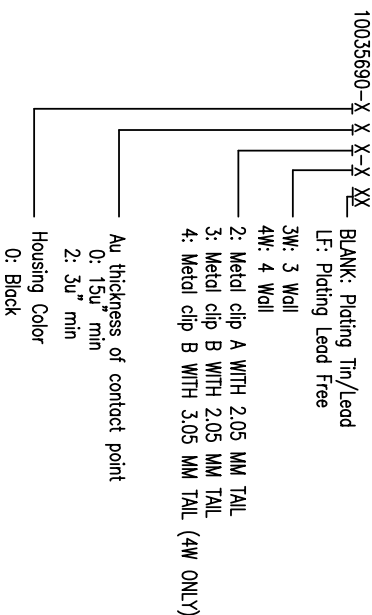
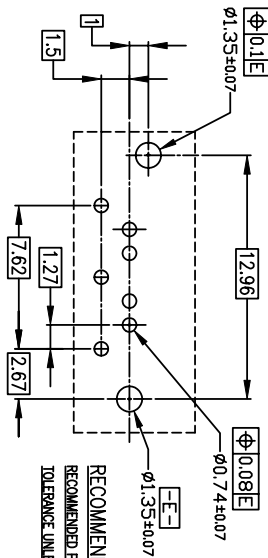
1 | 2

3 |

4



1 | 2



3 |

4

- NOTES :
- MATERIAL
    - HOUSING : HIGH TEMPERATURE THERMOPLASTIC UL94V-0
    - TERMINAL : COPPER ALLOY
    - HOLD DOWN : COPPER ALLOY
  - FINISH
    - TERMINAL : Au PLATING AT CONTACT POINT  
100u" min Sn-Pb or PURE TIN PLATING AT SOLDER TAIL WITH NICKEL UNDERPLATE
    - HOLD DOWN : 100-200 u" Sn-Pb or PURE TIN PLATING.
  - P/N : 10035690-XXXXLF  
THE HOUSING WILL WITHSTAND EXPOSURE TO 260 DEGREE C PEAK TEMPERATURE FOR 10 SECONDS IN A WAVE SOLDER APPLICATION WITH 1.6MM MINIMUM THICK CIRCUIT BOARD.
  - Packaging spec: GS-14-840.
  - Product Spec: GS-12-194.

1 | 2

mat'l. code		tolerances unless otherwise specified		CUSTOMER COPY		title	
ltr	ecn no	dr	date	linear	projection	product family	SATA
A	T05-0213	W.L	09/09/05	.XX ± 0.20	MM	S-ATA SIGNAL PLUG	
B	T08-1033	S.Lin	02/29/08	.XXX ± 0.10	MM	DIP VERTICAL TYPE ASSY	
		angles		0° ±2°	scale	size	A4
		dr	09/09/05			dwg no	10035690
		engr	09/09/05			code	TWN
		chr	09/09/05			sheet	3 of
		appd	09/09/05				
sheet	revision						
index	sheet	B	B	B			
		1	2	3			

3 |

4

ACAD

code code