

4

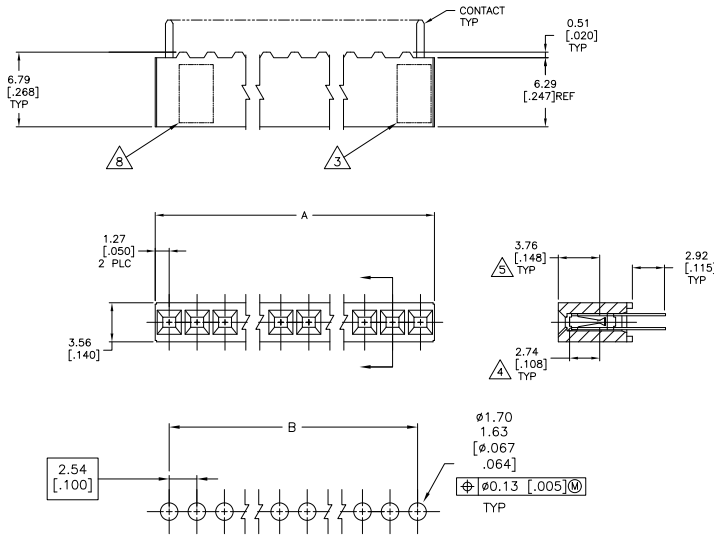
3

2

1

THIS DRAWING IS UNPUBLISHED. RELEASED FOR PUBLICATION. ALL RIGHTS RESERVED.

LOC	DIST	REVISIONS					
AD	00	F	LNK	DESCRIPTION	DATE	BY	APPD
		AA3		REVISED PER ECO-11-004917	11MAR11	RK	HMR



RECOMMENDED PC BOARD HOLE PATTERN

PC BOARD THICKNESS 1.57 [0.062]

- 1 HOUSING: GLASS FILLED FLAME RETARDANT POLYESTER, COLOR BLACK, CONTACTS: PHOSPHOR BRONZE.
- 2 CONTACTS: DUPLEX PLATED 0.76 MICROMETERS [0.00030] GOLD IN CONTACT AREA 3.81-7.62 MICROMETERS [0.000150-0.000300] BRIGHT TIN-LEAD ON SOLDER LEADS. ALL OVER 1.27[0.000050] MIN NICKEL.
- 3 TE CONNECTIVITY, CSA LOGO MOLDED INTO HOUSING.
- 4 POINT OF MEASUREMENT FOR PLATING THICKNESS, MEASURED INSIDE CONTACT BEAMS
- 5 POINT OF CONTACT DIMENSION.
- 6 CONTACTS: DUPLEX PLATED 0.76 MICROMETERS (0.00030) GOLD IN CONTACT AREA 3.81-7.62 MICROMETERS (0.000150-0.000300) MATTE TIN ON SOLDER LEADS. ALL OVER 1.27 (0.000050) MIN NICKEL.
- 7 ROHS 2002 /95/EC COMPLIANT.
- 8 PART NUMBER AND DATE CODE MARKED IN APPROXIMATE LOCATION SHOWN.
- 9 NO PART NUMBER MARKING REQUIRED FOR THIS PART.
- 10 FOR 2 POS, DATE CODES MARKED OPPOSITE SIDE OF TE CONNECTIVITY LOGO.
- 11 OBSOLETE PARTS: OBSOLETE CIS STREAMLINING PER D.RENAUD/D.SINISI

5.08 [0.200]	2.54 [0.100]	2	3-87879-9
12.70 [0.500]	10.16 [0.400]	5	3-87879-8
7.62 [0.300]	5.08 [0.200]	3	3-87879-7
10.16 [0.400]	7.62 [0.300]	4	3-87879-6
101.60 [4.000]	99.06 [3.900]	40	3-87879-5
99.06 [3.900]	96.52 [3.800]	39	3-87879-4
96.52 [3.800]	93.98 [3.700]	38	3-87879-3
93.98 [3.700]	91.44 [3.600]	37	3-87879-2
91.44 [3.600]	88.90 [3.500]	36	3-87879-1
88.90 [3.500]	86.36 [3.400]	35	3-87879-0
86.36 [3.400]	83.82 [3.300]	34	2-87879-9
83.82 [3.300]	81.28 [3.200]	33	2-87879-8
81.28 [3.200]	78.74 [3.100]	32	2-87879-7
78.74 [3.100]	76.20 [3.000]	31	2-87879-6
76.20 [3.000]	73.66 [2.900]	30	2-87879-5
73.66 [2.900]	71.12 [2.800]	29	2-87879-4
71.12 [2.800]	68.58 [2.700]	28	2-87879-3
68.58 [2.700]	66.04 [2.600]	27	2-87879-2
66.04 [2.600]	63.50 [2.500]	26	2-87879-1
63.50 [2.500]	60.96 [2.400]	25	2-87879-0
60.96 [2.400]	58.42 [2.300]	24	1-87879-9
58.42 [2.300]	55.88 [2.200]	23	1-87879-8
55.88 [2.200]	53.34 [2.100]	22	1-87879-7
53.34 [2.100]	50.80 [2.000]	21	1-87879-6
50.80 [2.000]	48.26 [1.900]	20	1-87879-5
48.26 [1.900]	45.72 [1.800]	19	1-87879-4
45.72 [1.800]	43.18 [1.700]	18	1-87879-3
43.18 [1.700]	40.64 [1.600]	17	1-87879-2
40.64 [1.600]	38.10 [1.500]	16	1-87879-1
38.10 [1.500]	35.56 [1.400]	15	1-87879-0
35.56 [1.400]	33.02 [1.300]	14	87879-9
33.02 [1.300]	30.48 [1.200]	13	87879-8
30.48 [1.200]	27.94 [1.100]	12	87879-7
27.94 [1.100]	25.40 [1.000]	11	87879-6
25.40 [1.000]	22.86 [0.900]	10	87879-5
22.86 [0.900]	20.32 [0.800]	9	87879-4
20.32 [0.800]	17.78 [0.700]	8	87879-3
17.78 [0.700]	15.24 [0.600]	7	87879-2
15.24 [0.600]	12.70 [0.500]	6	87879-1
12.70 [0.500]	10.16 [0.400]	5	87879-0
10.16 [0.400]	7.62 [0.300]	4	87879-9
7.62 [0.300]	5.08 [0.200]	3	87879-8
5.08 [0.200]	2.54 [0.100]	2	87879-7
2.54 [0.100]	0	1	87879-6

THIS DRAWING IS A CONTROLLED DOCUMENT. DIM J. KNAUB 12-20-93. CHK A. GARDANY 6-28-94. NAME TE Connectivity. PRODUCT SPEC 108-25022. APPLICATION SPEC 114-25018. WEIGHT -. CUSTOMER DRAWING. SCALE 4:1. SHEET 1 of 2. REF AA3.

4

3

2

1

THIS DRAWING IS UNPUBLISHED. RELEASED FOR PUBLICATION.
 © copyright - By - ALL RIGHTS RESERVED.

LOC	DIST	REVISIONS					
AD	00	F	LNK	DESCRIPTION	DATE	BY	APPD
-	-	-	-	SEE SHEET 1	-	-	-

△	△	△	5.08	[.200]	2.54	[.100]	2	△	8-87879-9
△	△	△	12.70	[.500]	10.16	[.400]	5	△	8-87879-8
△	△	△	7.62	[.300]	5.08	[.200]	3	△	8-87879-7
△	△	△	10.16	[.400]	7.62	[.300]	4	△	8-87879-6
△	△	△	101.60	[4.000]	99.06	[3.900]	40	△	8-87879-5
△	△	△	99.06	[3.900]	96.52	[3.800]	39	△	8-87879-4
△	△	△	96.52	[3.800]	93.98	[3.700]	38	△	8-87879-3
△	△	△	93.98	[3.700]	91.44	[3.600]	37	△	8-87879-2
△	△	△	91.44	[3.600]	88.90	[3.500]	36	△	8-87879-1
△	△	△	88.90	[3.500]	86.36	[3.400]	35	△	8-87879-0
△	△	△	86.36	[3.400]	83.82	[3.300]	34	△	7-87879-9
△	△	△	83.82	[3.300]	81.28	[3.200]	33	△	7-87879-8
△	△	△	81.28	[3.200]	78.74	[3.100]	32	△	7-87879-7
△	△	△	78.74	[3.100]	76.20	[3.000]	31	△	7-87879-6
△	△	△	76.20	[3.000]	73.66	[2.900]	30	△	7-87879-5
△	△	△	73.66	[2.900]	71.12	[2.800]	29	△	7-87879-4
△	△	△	71.12	[2.800]	68.58	[2.700]	28	△	7-87879-3
△	△	△	68.58	[2.700]	66.04	[2.600]	27	△	7-87879-2
△	△	△	66.04	[2.600]	63.50	[2.500]	26	△	7-87879-1
△	△	△	63.50	[2.500]	60.96	[2.400]	25	△	7-87879-0
△	△	△	60.96	[2.400]	58.42	[2.300]	24	△	6-87879-9
△	△	△	58.42	[2.300]	55.88	[2.200]	23	△	6-87879-8
△	△	△	55.88	[2.200]	53.34	[2.100]	22	△	6-87879-7
△	△	△	53.34	[2.100]	50.80	[2.000]	21	△	6-87879-6
△	△	△	50.80	[2.000]	48.26	[1.900]	20	△	6-87879-5
△	△	△	48.26	[1.900]	45.72	[1.800]	19	△	6-87879-4
△	△	△	45.72	[1.800]	43.18	[1.700]	18	△	6-87879-3
△	△	△	43.18	[1.700]	40.64	[1.600]	17	△	6-87879-2
△	△	△	40.64	[1.600]	38.10	[1.500]	16	△	6-87879-1
△	△	△	38.10	[1.500]	35.56	[1.400]	15	△	6-87879-0
△	△	△	35.56	[1.400]	33.02	[1.300]	14	△	5-87879-9
△	△	△	33.02	[1.300]	30.48	[1.200]	13	△	5-87879-8
△	△	△	30.48	[1.200]	27.94	[1.100]	12	△	5-87879-7
△	△	△	27.94	[1.100]	25.40	[1.000]	11	△	5-87879-6
△	△	△	25.40	[1.000]	22.86	[.900]	9	△	5-87879-5
△	△	△	22.86	[.900]	20.32	[.800]	7	△	5-87879-4
△	△	△	20.32	[.800]	17.78	[.700]	8	△	5-87879-3
△	△	△	17.78	[.700]	15.24	[.600]	6	△	5-87879-2
△	△	△	15.24	[.600]	12.70	[.500]	5	△	5-87879-1
△	△	△	12.70	[.500]	10.16	[.400]	4	△	5-87879-0
△	△	△	10.16	[.400]	7.62	[.300]	3	△	5-87879-9
△	△	△	7.62	[.300]	5.08	[.200]	2	△	5-87879-8
△	△	△	5.08	[.200]	2.54	[.100]	1	△	5-87879-7

THIS DRAWING IS A CONTROLLED DOCUMENT.		DWG J. KNAUB 12-20-93 CHK A. GABANY 6-28-94 APD - NAME - PRODUCT SPEC 108-25022 APPLICATION SPEC 114-25018 WEIGHT - CUSTOMER DRAWING	DWG J. KNAUB 12-20-93 CHK A. GABANY 6-28-94 APD - NAME - PRODUCT SPEC 108-25022 APPLICATION SPEC 114-25018 WEIGHT - CUSTOMER DRAWING	DIMENSIONS: mm [INCHES] 0 PLG ± - 1 PLG ± - 2 PLG ± - 3 PLG ± .12[.005] 4 PLG ± - ANGLES ± - FINISH 2 6	TOLERANCES UNLESS OTHERWISE SPECIFIED DIMENSIONS ± - ANGLES ± - FINISH 2 6	FINISH A B NO OF POSN PART NUMBER	TE Connectivity CONNECTOR ASSEMBLY, MOD IV, SINGLE ROW .100CL, DUAL ENTRY SIZE CASE CODE DRAWING NO A2 00779 C-87879 SCALE 1:1 SHEET 2 of 2 REF AA3	RESTRICTED TO - REVISIONS
--	--	---	---	--	---	---	--	------------------------------