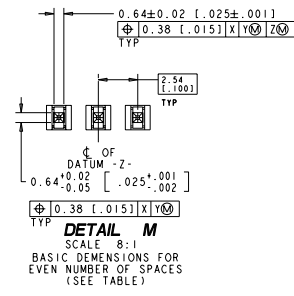
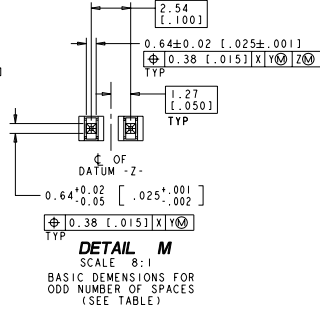
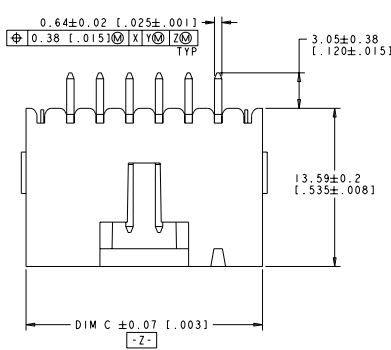
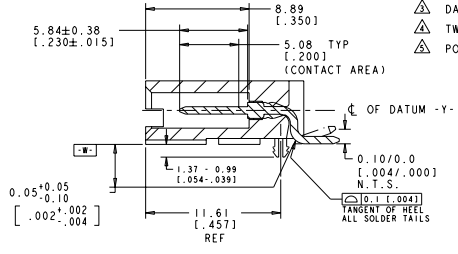
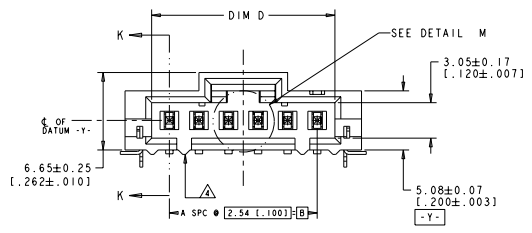


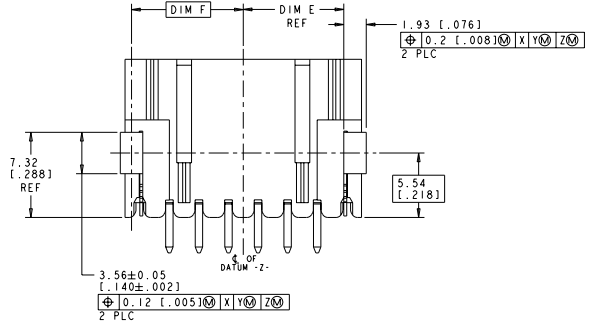
REVISED		REVISIONS			
NO.	DATE	BY	DESCRIPTION	DATE	BY
K1			REVISED PER ECO-11-004820		



- △ HOUSING: HIGH TEMPERATURE THERMOPLASTIC, COLOR-BLACK. POST: BRASS.
- △ POST: 0.000381 [.000015] MIN GOLD ON THE CONTACT AREA, 0.00254-0.00508 [.000100-.00200] MIN MATTE TIN-LEAD ON THE SOLDER TAILS, ALL OVER 0.00127 [.000050] NICKEL.
- △ DATUMS AND BASIC DIMENSIONS ESTABLISHED BY THE CUSTOMER.
- △ TWO POLARIZATION SLOTS ON ASSEMBLIES WITH FOUR OR MORE POSITIONS.
- △ POST: 0.000381 [.000015] MIN GOLD ON THE CONTACT AREA, 0.00254-0.00508 [.000100-.00200] MIN MATTE TIN ON THE SOLDER TAILS, ALL OVER 0.00127 [.000050] NICKEL.



**SECTION K-K**



SEE TABLE ON SHEET #3 & #4

THIS DRAWING IS A CONTROLLED DOCUMENT.		BY: [Signature]	DATE: 1988	BY: [Signature]	DATE: 1988
DRAWING TITLE: HEADER ASSEMBLY, LATCHING, RIGHT ANGLE SURFACE MOUNT, MTE, AMPRODU		TE Connectivity			
DRAWING NUMBER: 108-28034		STATE: CA CASE NUMBER: 147278			
DRAWING SCALE: 1:1		DRAWING SHEET: 6:1			



8 7 6 5 4 3 2 1

FILE NUMBER TO IMPROVE REVISIONS FOR PUBLICATION

ALL RIGHTS RESERVED

REV	DATE	DESCRIPTION	BY	CHK
00		SEE SHEET 1		

△	88	65.79 [2.590]	33.73 [1.328]	32.77 [1.290]	64.01 [2.520]	68.58 [2.700]	60.96 [2.400]	24	25	2-147278-4
△	88	63.25 [2.490]	32.46 [1.278]	31.50 [1.240]	61.47 [2.420]	66.04 [2.600]	58.42 [2.300]	23	24	2-147278-3
△	88	60.71 [2.390]	31.19 [1.228]	30.23 [1.190]	58.93 [2.320]	63.50 [2.500]	55.88 [2.200]	22	23	2-147278-2
△	88	58.17 [2.290]	29.92 [1.178]	28.96 [1.140]	56.39 [2.220]	60.96 [2.400]	53.34 [2.100]	21	22	2-147278-1
△	88	55.63 [2.190]	28.65 [1.128]	27.69 [1.090]	53.85 [2.120]	58.42 [2.300]	50.80 [2.000]	20	21	2-147278-0
△	72	53.09 [2.090]	27.38 [1.078]	26.42 [1.040]	51.31 [2.020]	55.88 [2.200]	48.26 [1.900]	19	20	1-147278-9
△	72	50.55 [1.990]	26.11 [1.028]	25.15 [1.000]	48.77 [1.920]	53.34 [2.100]	45.72 [1.800]	18	19	1-147278-8
△	72	48.01 [1.890]	24.84 [1.978]	23.88 [1.940]	46.23 [1.820]	50.80 [2.000]	43.18 [1.700]	17	18	1-147278-7
△	72	45.47 [1.790]	23.57 [1.928]	22.61 [1.890]	43.69 [1.720]	48.26 [1.900]	40.64 [1.600]	16	17	1-147278-6
△	72	42.93 [1.690]	22.30 [1.878]	21.34 [1.840]	41.15 [1.620]	45.72 [1.800]	38.10 [1.500]	15	16	1-147278-5
△	72	40.39 [1.590]	21.03 [1.828]	20.07 [1.790]	38.61 [1.520]	43.18 [1.700]	35.56 [1.400]	14	15	1-147278-4
△	56	37.85 [1.490]	19.76 [1.778]	18.80 [1.740]	36.07 [1.420]	40.64 [1.600]	33.02 [1.300]	13	14	1-147278-3
△	56	35.31 [1.390]	18.49 [1.728]	17.53 [1.690]	33.53 [1.320]	38.10 [1.500]	30.48 [1.200]	12	13	1-147278-2
△	56	32.77 [1.290]	17.22 [1.678]	16.26 [1.640]	30.99 [1.220]	35.56 [1.400]	27.94 [1.100]	11	12	1-147278-1
△	56	30.23 [1.190]	15.95 [1.628]	14.99 [1.590]	28.45 [1.120]	33.02 [1.300]	25.40 [1.000]	10	11	1-147278-0
△	44	27.69 [1.090]	14.68 [1.578]	13.72 [1.540]	25.91 [1.020]	30.48 [1.200]	22.86 [1.000]	9	10	147278-9
△	44	25.15 [1.000]	13.41 [1.528]	12.45 [1.490]	23.37 [1.020]	27.94 [1.100]	20.32 [1.000]	8	9	147278-8
△	44	22.61 [1.000]	12.14 [1.478]	11.18 [1.440]	20.83 [1.020]	25.40 [1.000]	17.78 [1.000]	7	8	147278-7
△	44	20.07 [1.000]	10.87 [1.428]	9.91 [1.390]	18.29 [1.000]	22.86 [1.000]	15.24 [1.000]	6	7	147278-6
△	44	17.53 [1.000]	9.60 [1.378]	8.64 [1.340]	15.75 [1.000]	20.32 [1.000]	12.70 [1.000]	5	6	147278-5
△	32	14.99 [1.000]	8.33 [1.328]	7.37 [1.290]	13.21 [1.000]	17.78 [1.000]	10.16 [1.000]	4	5	147278-4
△	24	12.45 [1.000]	7.06 [1.278]	6.10 [1.240]	10.67 [1.000]	15.24 [1.000]	7.62 [1.000]	3	4	147278-3
△	24	9.91 [1.000]	5.79 [1.228]	4.83 [1.190]	8.13 [1.000]	12.70 [1.000]	5.08 [1.000]	2	3	147278-2
△	24	7.37 [1.000]	4.52 [1.178]	3.56 [1.140]	5.59 [1.000]	10.16 [1.000]	2.54 [1.000]	1	2	147278-1
PLATING	EIA 481 TAPE WIDTH mm	G	F	E	D	C	B	A	NO OF POSN	PART NUMBER

THIS DRAWING IS A CONTROLLED DOCUMENT.

STAMPING: DATE: 02/15/2011

SCALE: 1:1 (AS SHOWN)

UNIT: MILLIMETERS

APPROVALS:

- DESIGNED BY: [Signature]
- CHECKED BY: [Signature]
- ENGINEER: [Signature]
- MANUFACTURING: [Signature]

STATE: CA CASE CODE: DRAWING NO: 00779-147278

CUSTOMER DRAWING: [Signature]

DATE: 6-11-04

TE Connectivity

HEADER ASSEMBLY, LATCHING, RIGHT ANGLE SURFACE MOUNT, MTE, AMPFOUW

DATE DRAWING TO BE PUBLISHED: 1998  
 REVISIONS FOR PUBLICATION: ALL RIGHTS RESERVED

REVISED		REVISIONS			
NO.	DATE	BY	DESCRIPTION	DATE	BY
AD	00		SEE SHEET 1		

△	88	65.79 [2.590]	33.73 [1.328]	32.77 [1.290]	64.01 [2.520]	68.58 [2.700]	60.96 [2.400]	24	25	7-147278-4
△	88	63.25 [2.490]	32.46 [1.278]	31.50 [1.240]	61.47 [2.420]	66.04 [2.600]	58.42 [2.300]	23	24	7-147278-3
△	88	60.71 [2.390]	31.19 [1.228]	30.23 [1.190]	58.93 [2.320]	63.50 [2.500]	55.88 [2.200]	22	23	7-147278-2
△	88	58.17 [2.290]	29.92 [1.178]	28.96 [1.140]	56.39 [2.220]	60.96 [2.400]	53.34 [2.100]	21	22	7-147278-1
△	88	55.63 [2.190]	28.65 [1.128]	27.69 [1.090]	53.85 [2.120]	58.42 [2.300]	50.80 [2.000]	20	21	7-147278-0
△	72	53.09 [2.090]	27.38 [1.078]	26.42 [1.040]	51.31 [2.020]	55.88 [2.200]	48.26 [1.900]	19	20	6-147278-9
△	72	50.55 [1.990]	26.11 [1.028]	25.15 [1.990]	48.77 [1.920]	53.34 [2.100]	45.72 [1.800]	18	19	6-147278-8
△	72	48.01 [1.890]	24.84 [1.978]	23.88 [1.940]	46.23 [1.820]	50.80 [2.000]	43.18 [1.700]	17	18	6-147278-7
△	72	45.47 [1.790]	23.57 [1.928]	22.61 [1.890]	43.69 [1.720]	48.26 [1.900]	40.64 [1.600]	16	17	6-147278-6
△	72	42.93 [1.690]	22.30 [1.878]	21.34 [1.840]	41.15 [1.620]	45.72 [1.800]	38.10 [1.500]	15	16	6-147278-5
△	72	40.39 [1.590]	21.03 [1.828]	20.07 [1.790]	38.61 [1.520]	43.18 [1.700]	35.56 [1.400]	14	15	6-147278-4
△	56	37.85 [1.490]	19.76 [1.778]	18.80 [1.740]	36.07 [1.420]	40.64 [1.600]	33.02 [1.300]	13	14	6-147278-3
△	56	35.31 [1.390]	18.49 [1.728]	17.53 [1.690]	33.53 [1.320]	38.10 [1.500]	30.48 [1.200]	12	13	6-147278-2
△	56	32.77 [1.290]	17.22 [1.678]	16.26 [1.640]	30.99 [1.220]	35.56 [1.400]	27.94 [1.100]	11	12	6-147278-1
△	56	30.23 [1.190]	15.95 [1.628]	14.99 [1.590]	28.45 [1.120]	33.02 [1.300]	25.40 [1.000]	10	11	6-147278-0
△	44	27.69 [1.090]	14.68 [1.578]	13.72 [1.540]	25.91 [1.020]	30.48 [1.200]	22.86 [1.900]	9	10	5-147278-9
△	44	25.15 [1.990]	13.41 [1.528]	12.45 [1.490]	23.37 [1.920]	27.94 [1.100]	20.32 [1.800]	8	9	5-147278-8
△	44	22.61 [1.890]	12.14 [1.478]	11.18 [1.440]	20.83 [1.820]	25.40 [1.000]	17.78 [1.700]	7	8	5-147278-7
△	44	20.07 [1.790]	10.87 [1.428]	9.91 [1.390]	18.29 [1.720]	22.86 [1.900]	15.24 [1.600]	6	7	5-147278-6
△	44	17.53 [1.690]	9.60 [1.378]	8.64 [1.340]	15.75 [1.620]	20.32 [1.800]	12.70 [1.500]	5	6	5-147278-5
△	32	14.99 [1.590]	8.33 [1.328]	7.37 [1.290]	13.21 [1.520]	17.78 [1.700]	10.16 [1.400]	4	5	5-147278-4
△	24	12.45 [1.490]	7.06 [1.278]	6.10 [1.240]	10.67 [1.420]	15.24 [1.600]	7.62 [1.300]	3	4	5-147278-3
△	24	9.91 [1.390]	5.79 [1.228]	4.83 [1.190]	8.13 [1.320]	12.70 [1.500]	5.08 [1.200]	2	3	5-147278-2
△	24	7.37 [1.290]	4.52 [1.178]	3.56 [1.140]	5.59 [1.220]	10.16 [1.400]	2.54 [1.100]	1	2	5-147278-1
PLATING	EIA 481 TAPE WIDTH mm	G	F	E	D	C	B	A	NO OF POSN	PART NUMBER

THIS DRAWING IS A CONTROLLED DOCUMENT.		DATE: 1998	BY: [Signature]	FOR: [Signature]
DESIGNED BY: [Signature]	CHECKED BY: [Signature]	DATE: 1998	BY: [Signature]	FOR: [Signature]
APPROVED BY: [Signature]	DATE: 1998	BY: [Signature]	FOR: [Signature]	
DRAWING TITLE: HEADER ASSEMBLY, LATCHING, RIGHT ANGLE SURFACE MOUNT, MTE, AMPRODU		CUSTOMER DRAWING		
PART NUMBER: A100779		REVISED: 00		