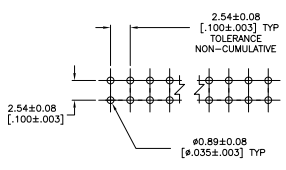
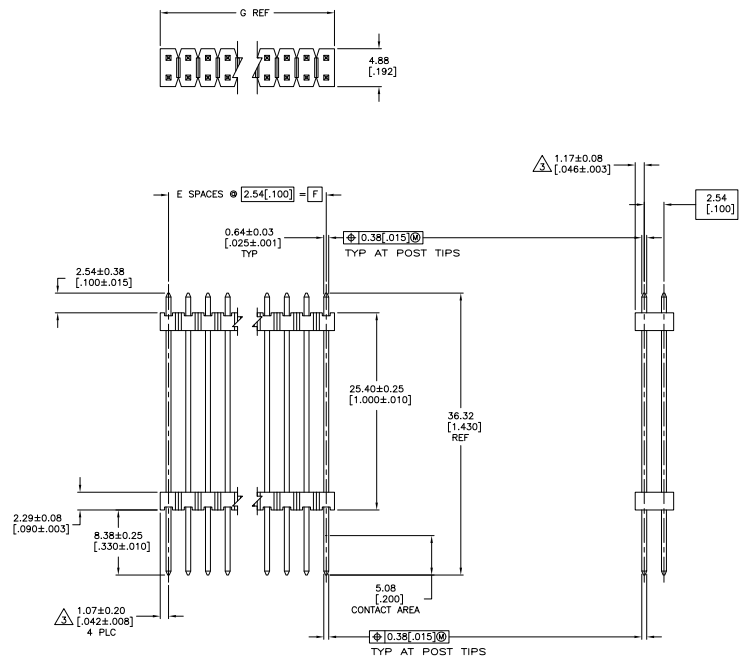


REV	DATE	DESCRIPTION	BY	APP
AD 00				
AT		REVISED PER ECO-11-004820	11MM11	RK HMR



RECOMMENDED HOLE LAYOUT

- ASSEMBLY MAY BE BROKEN TO THE DESIRED NUMBER OF POSITIONS
 - TRUE POSITION TOLERANCE OF THE POST TIPS APPLIES WHEN THE HEADER IS HELD FLAT AGAINST THE PRINTED CIRCUIT BOARD
- △ THE NOTED DIMENSIONS APPLY AT THE INTERSECTION OF THE POST AND HOUSING
- △ HOUSING: FLAME RETARDANT THERMOPLASTIC; COLOR: BLACK.
- △ FINISH: 0.000381 [0.00015] GOLD ON CONTACT AREA, 0.00254-0.00508 [0.00100-0.00200] MATTE TIN-LEAD ON SOLDER TAIL, 0.00127 [0.00050] NICKEL ENTIRE POST.
- △ FINISH: 0.000381 [0.00015] GOLD ON CONTACT AREA, 0.00254-0.00508 [0.00100-0.00200] MATTE TIN ON SOLDER TAIL, 0.00127 [0.00050] NICKEL ENTIRE POST.

THIS DRAWING IS A CONTROLLED DOCUMENT.		REV. 00	DATE	DESCRIPTION	BY	APP
DRAWING NUMBER: 146509		REV. 00	DATE	DESCRIPTION	BY	APP
DRAWING TITLE: HEADER ASSEMBLY, MOD II, STACKING, DOUBLE ROW, .025 SQ. POST, UNDERGROUDED		REV. 00	DATE	DESCRIPTION	BY	APP
DRAWING SCALE: 1:1		REV. 00	DATE	DESCRIPTION	BY	APP
DRAWING SHEET: 1 OF 2		REV. 00	DATE	DESCRIPTION	BY	APP
DRAWING PART: 146509		REV. 00	DATE	DESCRIPTION	BY	APP
DRAWING PROJECT: 146509		REV. 00	DATE	DESCRIPTION	BY	APP
DRAWING CUSTOMER: CUSTOMER DRAWING		REV. 00	DATE	DESCRIPTION	BY	APP

THIS DRAWING IS UNPUBLISHED
 ALL RIGHTS RESERVED

REV	DATE	BY	DESCRIPTION
AD	00		

△	101.19	99.06	39	80	9-146509-0
△	[3.984]	[3.900]			
△	98.65	96.52	38	78	8-146509-9
△	[3.884]	[3.800]			
△	96.11	93.98	37	76	8-146509-8
△	[3.784]	[3.700]			
△	93.57	91.44	36	74	8-146509-7
△	[3.684]	[3.600]			
△	91.03	88.90	35	72	8-146509-6
△	[3.584]	[3.500]			
△	88.49	86.36	34	70	8-146509-5
△	[3.484]	[3.400]			
△	85.95	83.82	33	68	8-146509-4
△	[3.384]	[3.300]			
△	83.41	81.28	32	66	8-146509-3
△	[3.284]	[3.200]			
△	80.87	78.74	31	64	8-146509-2
△	[3.184]	[3.100]			
△	78.33	76.20	30	62	8-146509-1
△	[3.084]	[3.000]			
△	75.79	73.66	29	60	8-146509-0
△	[2.984]	[2.900]			
△	73.25	71.12	28	58	7-146509-9
△	[2.884]	[2.800]			
△	70.71	68.58	27	56	7-146509-8
△	[2.784]	[2.700]			
△	68.17	66.04	26	54	7-146509-7
△	[2.684]	[2.600]			
△	65.63	63.50	25	52	7-146509-6
△	[2.584]	[2.500]			
△	63.09	60.96	24	50	7-146509-5
△	[2.484]	[2.400]			
△	60.55	58.42	23	48	7-146509-4
△	[2.384]	[2.300]			
△	58.01	55.88	22	46	7-146509-3
△	[2.284]	[2.200]			
△	55.47	53.34	21	44	7-146509-2
△	[2.184]	[2.100]			
△	52.93	50.80	20	42	7-146509-1
△	[2.084]	[2.000]			
△	50.39	48.26	19	40	7-146509-0
△	[1.984]	[1.900]			
△	47.85	45.72	18	38	6-146509-9
△	[1.884]	[1.800]			
△	45.31	43.18	17	36	6-146509-8
△	[1.784]	[1.700]			
△	42.77	40.64	16	34	6-146509-7
△	[1.684]	[1.600]			
△	40.23	38.10	15	32	6-146509-6
△	[1.584]	[1.500]			
△	37.69	35.56	14	30	6-146509-5
△	[1.484]	[1.400]			
△	35.15	33.02	13	28	6-146509-4
△	[1.384]	[1.300]			
△	32.61	30.48	12	26	6-146509-3
△	[1.284]	[1.200]			
△	30.07	27.94	11	24	6-146509-2
△	[1.184]	[1.100]			
△	27.53	25.40	10	22	6-146509-1
△	[1.084]	[1.000]			
△	24.99	22.86	9	20	6-146509-0
△	[.984]	[.900]			
△	22.45	20.32	8	18	5-146509-9
△	[.884]	[.800]			
△	19.91	17.78	7	16	5-146509-8
△	[.784]	[.700]			
△	17.37	15.24	6	14	5-146509-7
△	[.684]	[.600]			
△	14.83	12.70	5	12	5-146509-6
△	[.584]	[.500]			
△	12.29	10.16	4	10	5-146509-5
△	[.484]	[.400]			
△	9.75	7.62	3	8	5-146509-4
△	[.384]	[.300]			
△	7.21	5.08	2	6	5-146509-3
△	[.284]	[.200]			
△	4.67	2.54	1	4	5-146509-2
△	[.184]	[.100]			
△	2.13	-	-	2	5-146509-1
△	[.084]	-	-		
PLATING	G	F	E	NO. OF POSITIONS	PART NUMBER

△	101.19	99.06	39	80	4-146509-0
△	[3.984]	[3.900]			
△	98.65	96.52	38	78	3-146509-9
△	[3.884]	[3.800]			
△	96.11	93.98	37	76	3-146509-8
△	[3.784]	[3.700]			
△	93.57	91.44	36	74	3-146509-7
△	[3.684]	[3.600]			
△	91.03	88.90	35	72	3-146509-6
△	[3.584]	[3.500]			
△	88.49	86.36	34	70	3-146509-5
△	[3.484]	[3.400]			
△	85.95	83.82	33	68	3-146509-4
△	[3.384]	[3.300]			
△	83.41	81.28	32	66	3-146509-3
△	[3.284]	[3.200]			
△	80.87	78.74	31	64	3-146509-2
△	[3.184]	[3.100]			
△	78.33	76.20	30	62	3-146509-1
△	[3.084]	[3.000]			
△	75.79	73.66	29	60	3-146509-0
△	[2.984]	[2.900]			
△	73.25	71.12	28	58	2-146509-9
△	[2.884]	[2.800]			
△	70.71	68.58	27	56	2-146509-8
△	[2.784]	[2.700]			
△	68.17	66.04	26	54	2-146509-7
△	[2.684]	[2.600]			
△	65.63	63.50	25	52	2-146509-6
△	[2.584]	[2.500]			
△	63.09	60.96	24	50	2-146509-5
△	[2.484]	[2.400]			
△	60.55	58.42	23	48	2-146509-4
△	[2.384]	[2.300]			
△	58.01	55.88	22	46	2-146509-3
△	[2.284]	[2.200]			
△	55.47	53.34	21	44	2-146509-2
△	[2.184]	[2.100]			
△	52.93	50.80	20	42	2-146509-1
△	[2.084]	[2.000]			
△	50.39	48.26	19	40	2-146509-0
△	[1.984]	[1.900]			
△	47.85	45.72	18	38	1-146509-9
△	[1.884]	[1.800]			
△	45.31	43.18	17	36	1-146509-8
△	[1.784]	[1.700]			
△	42.77	40.64	16	34	1-146509-7
△	[1.684]	[1.600]			
△	40.23	38.10	15	32	1-146509-6
△	[1.584]	[1.500]			
△	37.69	35.56	14	30	1-146509-5
△	[1.484]	[1.400]			
△	35.15	33.02	13	28	1-146509-4
△	[1.384]	[1.300]			
△	32.61	30.48	12	26	1-146509-3
△	[1.284]	[1.200]			
△	30.07	27.94	11	24	1-146509-2
△	[1.184]	[1.100]			
△	27.53	25.40	10	22	1-146509-1
△	[1.084]	[1.000]			
△	24.99	22.86	9	20	1-146509-0
△	[.984]	[.900]			
△	22.45	20.32	8	18	146509-9
△	[.884]	[.800]			
△	19.91	17.78	7	16	146509-8
△	[.784]	[.700]			
△	17.37	15.24	6	14	146509-7
△	[.684]	[.600]			
△	14.83	12.70	5	12	146509-6
△	[.584]	[.500]			
△	12.29	10.16	4	10	146509-5
△	[.484]	[.400]			
△	9.75	7.62	3	8	146509-4
△	[.384]	[.300]			
△	7.21	5.08	2	6	146509-3
△	[.284]	[.200]			
△	4.67	2.54	1	4	146509-2
△	[.184]	[.100]			
△	2.13	-	-	2	146509-1
△	[.084]	-	-		
PLATING	G	F	E	NO. OF POSITIONS	PART NUMBER

THIS DRAWING IS A CONTROLLED DOCUMENT.

UNLESS OTHERWISE SPECIFIED, DIMENSIONS ARE IN INCHES.

UNLESS OTHERWISE SPECIFIED, FINISHES ARE:

AS BUILT

TE Connectivity

HEADER ASSEMBLY, MOD II,
 STACKING, DOUBLE ROW,
 .002 SQ. POST, UNBROUDED

DATE: 00779
 DRAWING NO: G-146509

CUSTOMER DRAWING

SIZE: 4.1

SHEET: 2

TOTAL SHEETS: 2

REVISED TO: A1