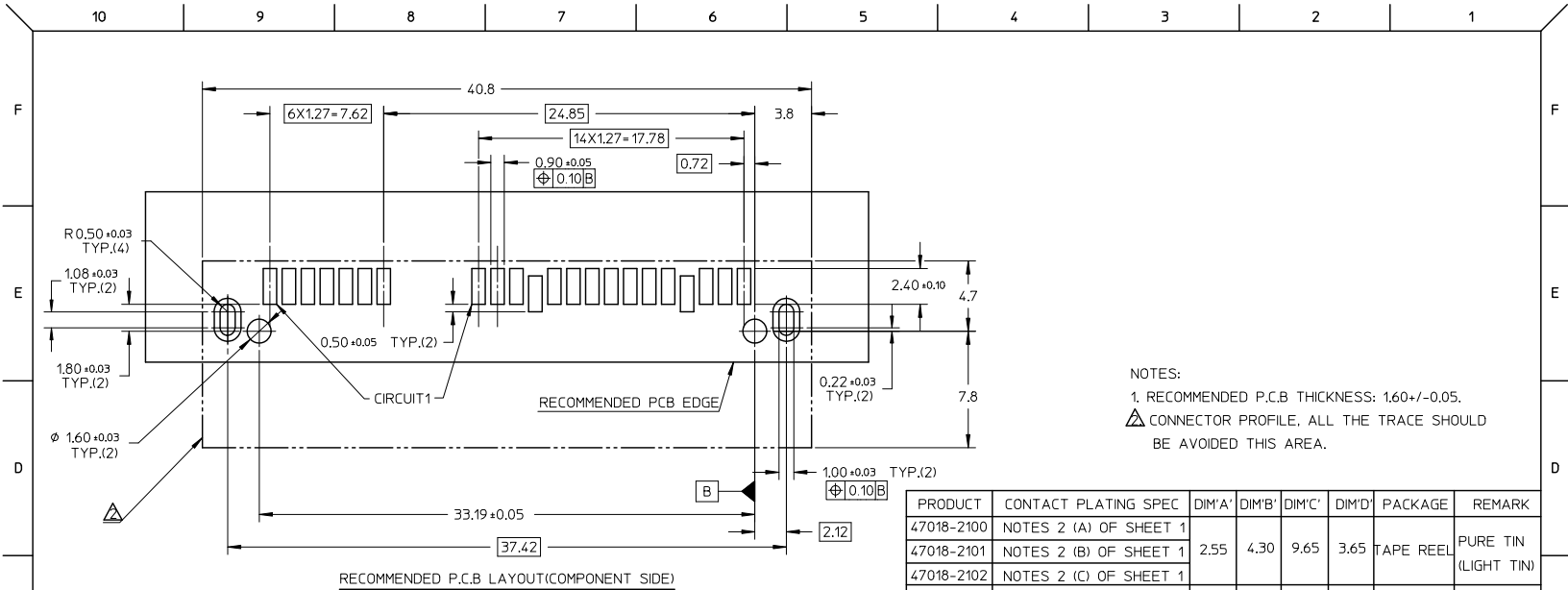


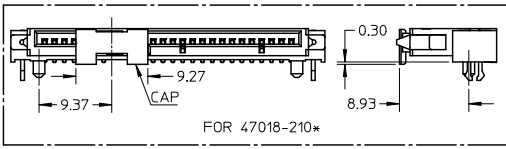
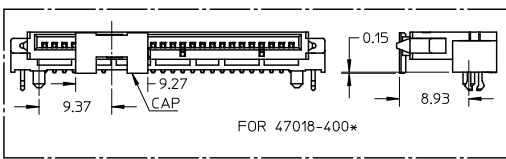
- NOTES:
- MATERIAL:
    - HOUSING: THERMAL PLASTIC, GLASS FILLED, UL94V-0. COLOR: BLACK;
    - FORKLOCK: COPPER ALLOY;
    - TERMINALS: COPPER ALLOY.
  - TERMINAL PLATING:
    - CONTACT AREA:
      - (a) GOLD FLASH(0.025 MICRONS MINIMUM);
      - (b) GOLD, THICKNESS=0.76 MICRONS MINIMUM;
      - (c) GOLD, THICKNESS=0.38 MICRONS MINIMUM;
    - SOLDER AREA: TIN, THICKNESS=2.00 MICRONS MINIMUM;
    - UNDER PLATE: NICKEL, THICKNESS=1.27 MICRONS MINIMUM.
  - FORLOCK PLATING:
    - SOLDER AREA: TIN, THICKNESS=2.00 MICRONS MINIMUM;
    - UNDER PLATING: NICKEL, THICKNESS=1.27 MICRONS MINIMUM.
  - PRODUCT SPECIFICATION: PS-67492-001.
  - PACKAGING METHOD: 47018-400\*, TAPE REEL, DETAIL REFER TO PK-47018-003; 47018-210\*, TAPE REEL, DETAIL REFER TO PK-47018-004; OTHERS, TRAY, DETAIL REFER TO PK-67492-001.
  - MATING PARTS: 87703/87672.
  - PRODUCT COMPLIANT TO RoSH DIRECTIVE 2002/95/EC AND 2000/53/EC.

ADD PARTS EC NO: SH2011-0008 DRAWN BY: GORWINGELLI CHKD: CHYKD APPR: RZHHANG	2010/07/05 2010/10/12	QUALITY SYMBOLS ∇=0 ∇=0 ∇=0	GENERAL TOLERANCES (UNLESS SPECIFIED)		DIMENSION STYLE		SCALE	DESIGN UNITS	THIRD ANGLE PROJECTION		
					MM ONLY		2:1	METRIC	⊙ □		
					mm	INCH	DRAWN BY		DATE	TITLE	
							TOM LI		2004/10/25	SERIAL ATA DOCKING CONNECTOR TOP MOUNT TYPE	
				3 PLACES ± --- ± ---		CHECKED BY		DATE			
				2 PLACES ± 0.25 ± ---		GRATE MA		2004/10/25			
				1 PLACE ± 0.25 ± ---		APPROVED BY		DATE			
				ANGULAR ± 3°		VINCENT		2004/10/25			
		DRAFT WHERE APPLICABLE MUST REMAIN WITHIN DIMENSIONS		MATERIAL NO.		DOCUMENT NO.		SHEET NO.			
				SEE SGEET 2		SD-47018-001		1 OF 2			
THIS DRAWING CONTAINS INFORMATION THAT IS PROPRIETARY TO MOLEX INCORPORATED AND SHOULD NOT BE USED WITHOUT WRITTEN PERMISSION											



NOTES:  
 1. RECOMMENDED P.C.B THICKNESS: 1.60±/-0.05.  
 △ CONNECTOR PROFILE. ALL THE TRACE SHOULD BE AVOIDED THIS AREA.

PRODUCT	CONTACT PLATING SPEC	DIM'A	DIM'B	DIM'C	DIM'D	PACKAGE	REMARK
47018-2100	NOTES 2 (A) OF SHEET 1						
47018-2101	NOTES 2 (B) OF SHEET 1	2.55	4.30	9.65	3.65	TAPE REEL	PURE TIN (LIGHT TIN)
47018-2102	NOTES 2 (C) OF SHEET 1						
47018-4000	NOTES 2 (A) OF SHEET 1						
47018-4001	NOTES 2 (B) OF SHEET 1	3.40	5.15	10.50	4.50	TAPE REEL	PURE TIN (LIGHT TIN)
47018-4002	NOTES 2 (C) OF SHEET 1						
47018-3000	NOTES 2 (A) OF SHEET 1						
47018-3001	NOTES 2 (B) OF SHEET 1	2.95	4.70	10.05	4.05	TRAY	PURE TIN (LIGHT TIN)
47018-3002	NOTES 2 (C) OF SHEET 1						
47018-2010	NOTES 2 (A) OF SHEET 1						
47018-2011	NOTES 2 (B) OF SHEET 1	2.55	4.30	9.65	3.65	TRAY	PURE TIN (MATTE TIN)
47018-2012	NOTES 2 (C) OF SHEET 1						
47018-2000	NOTES 2 (A) OF SHEET 1						
47018-2001	NOTES 2 (B) OF SHEET 1	2.55	4.30	9.65	3.65	TRAY	PURE TIN (LIGHT TIN)
47018-2002	NOTES 2 (C) OF SHEET 1						



<b>ADD PARTS</b> EC NO: SH2011-0008 DRAWING: 2010/07/05 CHKD: 2010/10/12 APPR: ZHANG	<b>QUALITY SYMBOLS</b> ∇=0 ∇=0 ∇=0	<b>GENERAL TOLERANCES (UNLESS SPECIFIED)</b> 4 PLACES ± --- ± --- 3 PLACES ± --- ± --- 2 PLACES ± 0.25 ± --- 1 PLACE ± 0.25 ± --- ANGULAR ± 3°	<b>DIMENSION STYLE</b> MM ONLY	SCALE 1:1 DESIGN UNITS METRIC THIRD ANGLE PROJECTION	<b>TITLE</b> SERIAL ATA DOCKING CONNECTOR TOP MOUNT TYPE MOLEX INCORPORATED SD-47018-001	SHEET NO. 2 OF 2	
							<b>DRAWN BY</b> TOM LI <b>DATE</b> 2004/10/25
							<b>CHECKED BY</b> GRATE MA <b>DATE</b> 2004/10/25
							<b>APPROVED BY</b> VINCENT <b>DATE</b> 2004/10/25
<b>DRAFT WHERE APPLICABLE MUST REMAIN WITHIN DIMENSIONS</b>		<b>SEE TABLE</b>		THIS DRAWING CONTAINS INFORMATION THAT IS PROPRIETARY TO MOLEX INCORPORATED AND SHOULD NOT BE USED WITHOUT WRITTEN PERMISSION			