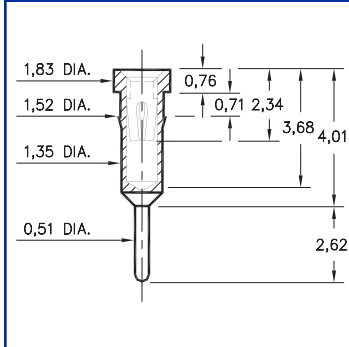
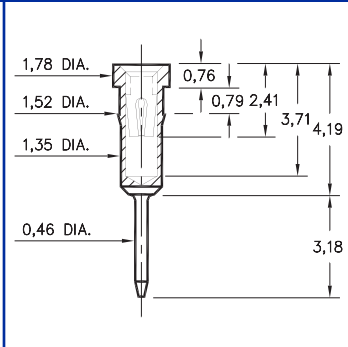


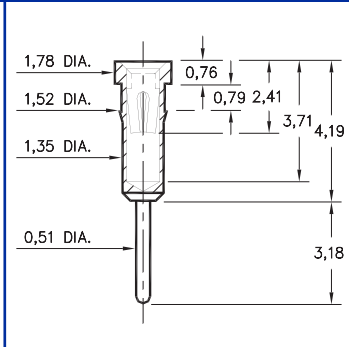
**4011                      1801                      1001                      0156**



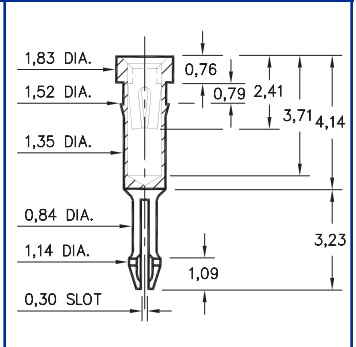
**4011-0-15-XX-30-XX-04-0**  
Press-fit in 1,45 mounting hole



**1801-0-15-XX-30-XX-04-0**  
Press-fit in 1,45 mounting hole  
Shell is Ph. Br. Alloy 544 (B2)

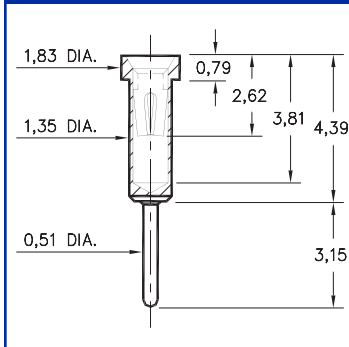


**1001-0-15-XX-3X-XX-04-0**  
Press-fit in 1,45 mounting hole

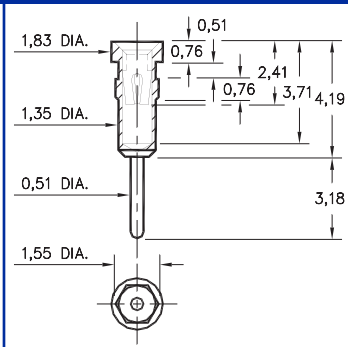


**0156-0-18-XX-30-XX-04-0**  
Self-retention socket pin 0,97-1,09 hole prior to soldering

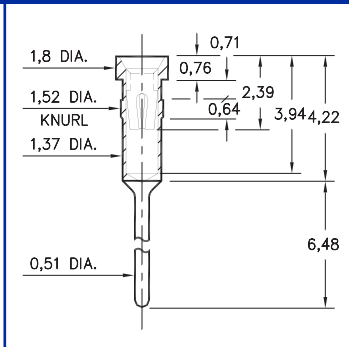
**0255                      1109                      3013                      0134**



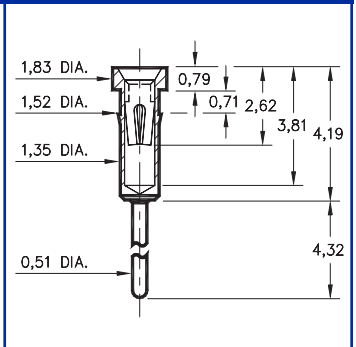
**0255-0-15-XX-30-XX-04-0**  
Solder mount in 0,56 min. mounting hole



**1109-0-15-XX-30-XX-04-0**  
Hex press-fit in 1,45 plated thru hole

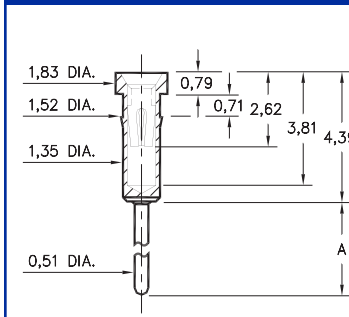


**3013-0-15-XX-32-XX-04-0**  
Press-fit in 1,45 mounting hole



**0134-0-15-XX-3X-XX-04-0**  
Press-fit in 1,45 mounting hole

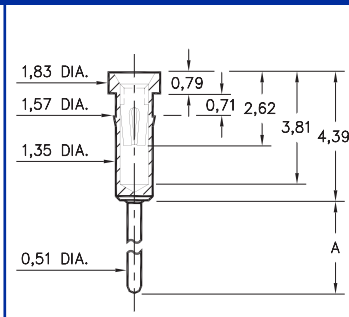
**0132/0135**



**013X-0-15-XX-30-XX-04-0**  
Press-fit in 1,45 mounting hole

Basic Part Number	Length A
0132-0	6,93
0135-0	4,65

**0133/0147**



**01XX-0-15-XX-30-XX-04-0**  
Press-fit in 1,5 mounting hole

Basic Part Number	Length A
0133-0	9,7
0147-0	14,3

**SPECIFICATIONS**

**SHELL MATERIAL:**  
Brass Alloy 360, 1/2 Hard

**CONTACT MATERIAL:**  
Beryllium Copper Alloy 172, HT

**DIMENSION IN INCHES TOLERANCES ON:**  
LENGTHS: ±0,13  
DIAMETERS: ±0,05  
ANGLES: ± 2°

**ORDER CODE: XXXX - X - 1X - XX - XX - XX - 04 - 0**

**BASIC PART #**                      **SPECIFY SHELL FINISH:**                      **SPECIFY CONTACT FINISH:**

01 5,08 m TIN/LEAD OVER NICKEL                      02 2,54 m TIN/LEAD OVER NICKEL

◇ 80 5,08 mTIN OVER NICKEL (RoHS)                      ◇ 84 2,54 m TIN OVER NICKEL (RoHS)

◇ 15 0,25 m GOLD OVER NICKEL (RoHS)                      ◇ 27 0,76 m GOLD OVER NICKEL (RoHS)

**SELECT CONTACT**  
#30 or #32 CONTACT (DATA ON PAGES 218 & 219)



Downloaded from Datasheet.su