

- NOTES
1. MATERIAL: NYLON 6/6, 94V-2.
  2. FINISH: SEE CRIMP TERMINAL DRAWING.
  3. THIS PRODUCT CONFORMS TO PRODUCT SPECIFICATION PS-08-50.
  4. PACKAGING: BULK PER PK-2574-001
  5. CONNECTOR TO BE USED WITH CRIMP TERMINALS:  
2478 → 18-24 GAGE WIRE; .110/(2.79) MAX. INSULATION DIAMETER.  
2578 → 22-26 GAGE WIRE; .095/(1.65) MAX. INSULATION DIAMETER.
  6. DIMENSIONS GIVEN ACROSS CENTERLINES ARE SYMMETRICAL ABOUT THOSE CENTERLINES WITHIN ONE HALF THE TOTAL TOLERANCE.
  7. PARTS LESS THAN 7 CIRCUITS ARE TO INDICATE ONLY CIRCUIT NO. 1. ALL OTHERS ARE TO IDENTIFY BOTH THE FIRST AND LAST CIRCUITS.
  8. PART CONFORMS TO CLASS B REQUIREMENTS OF COSMETIC SPECIFICATION PS-45499-002

2574 - N \* \* \*

NO. OF CIRCUITS

COLOR CODE  
BL=BLANK/NATURAL  
BK=BLACK

OPTION CODE

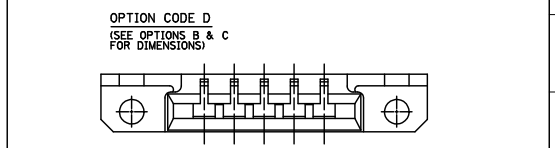
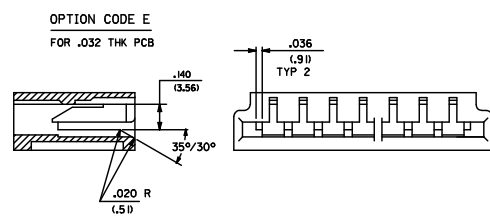
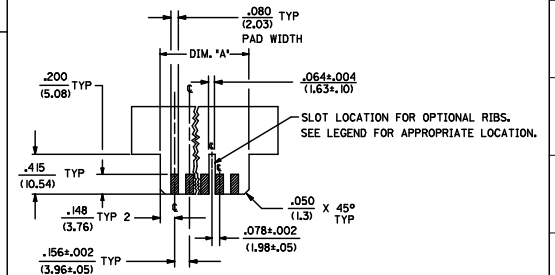
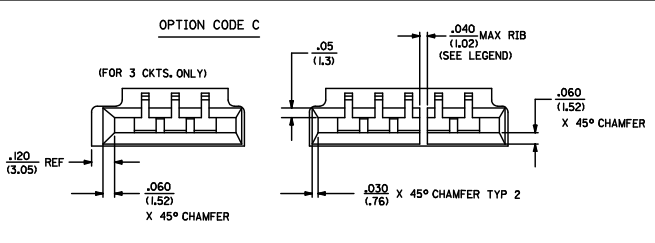
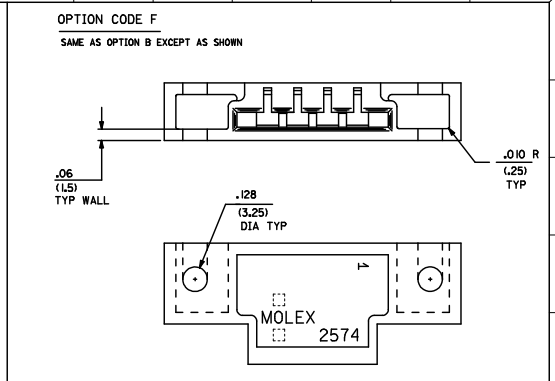
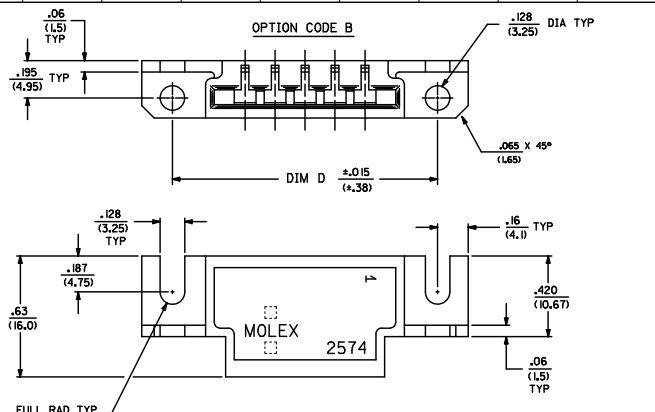
CODE	MOUNTING EARS	CHAMFERED SLOT	PCB THK	MOUNTING HOLES
A	NO	NO	.062	NO
B	YES	NO	.062	NO
C	NO	YES	.062	NO
D	YES	YES	.062	NO
E	NO	NO	.032	NO
F	YES	NO	.062	YES

RIB LOCATION CODE (BETWEEN CKTS)

- 1 = NONE
- 2 = 2-3
- 3 = 3-4
- 4 = 5-6
- 5 = 3-4, 5-6
- 6 = 4-5, 7-8
- 7 = 5-6, 8-9
- 8 = 5-6, 10-11
- 9 = 4-5, 7-8, 11-12
- 10 = 5-6, 10-11, 14-15
- 11 = 5-6, 10-11, 15-16
- 12 = 5-6, 11-12, 16-17
- 13 = 5-6, 11-12, 17-18
- 14 = 4-5, 7-8, 11-12, 15-16
- 15 = 4-5, 8-9, 12-13, 16-17, 20-21
- 16 = 5-6, 11-12, 18-19

<b>ADD PART NUMBERS</b> EDG CARD CONNECTOR C10 CHIKOSUUSEK APPROV: SHT 2008/12/28 2008/12/28 2008/07/05	QUALITY SYMBOLS 0 0	GENERAL TOLERANCES (UNLESS SPECIFIED) 4 PLACES ± .010 3 PLACES ± .010 2 PLACES ± 0.25 ± .015 1 PLACE ± 0.36 ± .015 ANGULAR ±1/2°	DIMENSION STYLE IN/MM DRAWN BY PEREZ-ARGUET 1988/03/02 CHECKED BY PATEL 1988/03/02 APPROVED BY LENZ 1988/03/02	SCALE 4:1 DESIGN UNITS INCH THIRD ANGLE PROJECTION	TITLE EDGE CARD CONNECTOR .156/(3.96) CENTERS CRIMP TYPE-2574 SERIES MOLEX INCORPORATED	SHEET NO. 1 OF 3
	DRAFT WHERE APPLICABLE MUST REMAIN WITHIN DIMENSIONS		MATERIAL NO. SEE CHART	DOCUMENT NO. SD-2574	MOLEX INCORPORATED	1 OF 3
	THIS DRAWING CONTAINS INFORMATION THAT IS PROPRIETARY TO MOLEX INCORPORATED AND SHOULD NOT BE USED WITHOUT WRITTEN PERMISSION					
	Rev. E 2006/04/15					

NO. OF CKT'S	DIM. C	DIM. D	DIM. E	DIM. A
3	.632 (16.05)	1.143 (29.03)	.312±.002 (7.92±.005)	.618 (15.70)
4	.788 (20.02)	1.224 (31.09)	.468±.002 (11.89±.05)	.774 (19.66)
5	.944 (23.98)	1.380 (35.05)	.624±.003 (15.85±.08)	.922 (23.42)
6	1.100 (27.94)	1.536 (39.01)	.780±.003 (19.81±.08)	1.078 (27.38)
7	1.256 (31.90)	1.692 (42.98)	.936±.003 (23.77±.08)	1.232 (31.29)
8	1.412 (35.86)	1.848 (46.94)	1.092±.004 (27.74±.10)	1.388 (35.26)
9	1.568 (39.83)	2.004 (50.90)	1.248±.004 (31.70±.10)	1.544 (39.22)
10	1.724 (43.79)	2.160 (54.86)	1.404±.006 (35.66±.15)	1.700 (43.18)
11	1.880 (47.75)	2.316 (58.83)	1.560±.006 (39.62±.15)	1.854 (47.09)
12	2.036 (51.71)	2.472 (62.79)	1.716±.006 (43.59±.15)	2.010 (51.05)
13	2.192 (55.68)	2.628 (66.75)	1.872±.006 (47.55±.15)	2.164 (54.97)
14	2.348 (59.64)	2.784 (70.71)	2.028±.007 (51.51±.18)	2.318 (58.88)
15	2.504 (63.60)	2.940 (74.68)	2.184±.007 (55.47±.18)	2.474 (62.84)
16	2.660 (67.56)	3.096 (78.64)	2.340±.007 (59.44±.18)	2.631 (66.83)
17	2.816 (71.53)	3.252 (82.60)	2.496±.008 (63.40±.20)	2.784 (70.71)
18	2.972 (75.49)	3.408 (86.56)	2.652±.009 (67.36±.23)	2.954 (75.03)
19	3.128 (79.45)	3.564 (90.53)	2.808±.009 (71.32±.23)	3.095 (78.61)
20	3.284 (83.41)	3.720 (94.49)	2.964±.009 (75.29±.23)	3.251 (82.58)
21	3.440 (87.38)	3.876 (98.45)	3.120±.010 (79.25±.25)	3.407 (86.54)
22	3.596 (91.34)	4.032 (102.41)	3.276±.011 (83.21±.25)	3.562 (90.47)
23	3.752 (95.30)	4.188 (106.38)	3.432±.011 (87.17±.28)	3.716 (94.39)
24	3.908 (99.26)	4.344 (110.34)	3.588±.012 (91.14±.30)	3.871 (98.32)



REVISION FACTORY ID: REV. 1: 08/05/98 REV. 2: 08/17/98 REV. 3: 08/17/98 REV. 4: 08/17/98 REV. 5: 08/17/98 REV. 6: 08/17/98 REV. 7: 08/17/98 REV. 8: 08/17/98 REV. 9: 08/17/98 REV. 10: 08/17/98 REV. 11: 08/17/98 REV. 12: 08/17/98 REV. 13: 08/17/98 REV. 14: 08/17/98 REV. 15: 08/17/98 REV. 16: 08/17/98 REV. 17: 08/17/98 REV. 18: 08/17/98 REV. 19: 08/17/98 REV. 20: 08/17/98 REV. 21: 08/17/98 REV. 22: 08/17/98 REV. 23: 08/17/98 REV. 24: 08/17/98	QUALITY SYMBOLS ▽=0 ▽=0	GENERAL TOLERANCES (UNLESS SPECIFIED)		DIMENSION STYLE IN/MM	SCALE ---	DESIGN UNITS INCH	THIRD ANGLE PROJECTION		
		4 PLACES ±.005 3 PLACES ±.005 2 PLACES ±.013 1 PLACE ±.025	±.005 ±.005 ±.01 ±.025	MIN INCH INCH INCH INCH	INCH INCH INCH INCH	DRAWN BY PEREZ-ARGUET CHECKED BY PATEL APPROVED BY LENZ	DATE 1988/03/02 DATE 1988/03/02 DATE 1988/03/02	TITLE EDGE CARD CONNECTOR .156/(3.96) CENTERS CRIMP TYPE-2574 SERIES MOLEX INCORPORATED	SHEET NO. 2 OF 3
		DRAFT WHERE APPLICABLE SEE CHART		MATERIAL NO. SD-2574		DOCUMENT NO. SD-2574		THIS DRAWING CONTAINS INFORMATION THAT IS PROPRIETARY TO MOLEX INCORPORATED AND SHOULD NOT BE USED WITHOUT WRITTEN PERMISSION	
		DRAFT WHERE APPLICABLE SEE CHART							

2574-NA*		2574-NB*		2574-NC*		2574-ND*		2574-NE*		2574-NF*	
PART NO.	ENG. NO. (SUFFIX ONLY)	PART NO.	ENG. NO. (SUFFIX ONLY)	PART NO.	ENG. NO. (SUFFIX ONLY)	PART NO.	ENG. NO. (SUFFIX ONLY)	PART NO.	ENG. NO. (SUFFIX ONLY)	PART NO.	ENG. NO. (SUFFIX ONLY)
09-01-6031	-3A1	09-01-7031	-3B1	09-01-6038	-3C1	09-01-6082	-3D1		-4E1	09-01-7065	-6F1-BK
09-01-6041	-4A1	09-01-7041	-4B1	009-01-6048	-04C1		-08D1		-6E1	09-01-7087	-8F1-BK
09-01-6051	-5A1	09-01-7051	-5B1	09-01-6088	-08C1		-20D1				
09-01-6064	-6A1	09-01-7064	-6B1		-20C1						
09-01-6081	-8A1	09-01-7081	-8B1								
	-8A1D	09-01-7069	-8B1D								
09-01-6095	-9A2		-8B1D								
09-01-6061	-6A2	09-01-7061	-6B2								
09-01-6085	-8A2	09-01-7085	-8B2								
09-01-6095	-9A2	09-01-7095	-9B2								
09-01-6071	-7A3	09-01-7071	-7B3								
09-01-6086	-8A3	09-01-7086	-8B3								
09-01-6083	-8A4	09-01-7083	-8B4								
09-01-6094	-9A4	09-01-7094	-9B4								
09-01-6091	-9A5	09-01-7091	-9B5								
09-01-6101	-10A6	09-01-7101	-10B6								
09-01-6121	-12A7	09-01-7121	-12B7								
09-01-6129	-12A4	09-01-7129	-12B4								
09-01-6181	-18A8	09-01-7181	-18B8								
09-01-6151	-15A9	09-01-7151	-15B9								
09-01-6161	-16A9	09-01-7161	-16B9								
09-01-6171	-17A10	09-01-7171	-17B10								
09-01-6211	-21A11	09-01-7211	-21B11								
09-01-6224	-22A12	09-01-7224	-22B12								
09-01-6221	-22A13	09-01-7221	-22B13								
09-01-6191	-19A14	09-01-7191	-19B14								
09-01-6241	-24A15	09-01-7241	-24B15								
09-01-7222	-22A16		-6B1-BK								

<b>ADD PART NUMBERS</b> FILED IN SECTION 4285 C/O CHRYSSOSEK APPROX. DATE: 2008/07/05	<b>QUALITY SYMBOLS</b> ▼=0 ▽=0	<b>GENERAL TOLERANCES (UNLESS SPECIFIED)</b> <table border="1"> <tr> <th></th> <th>MIN</th> <th>INCH</th> </tr> <tr> <td>4 PLACES ±</td> <td>±.0005</td> <td>±.0002</td> </tr> <tr> <td>3 PLACES ±</td> <td>±.0008</td> <td>±.0003</td> </tr> <tr> <td>2 PLACES ±</td> <td>±.0015</td> <td>±.0005</td> </tr> <tr> <td>1 PLACE ±</td> <td>±.0030</td> <td>±.0010</td> </tr> </table>		MIN	INCH	4 PLACES ±	±.0005	±.0002	3 PLACES ±	±.0008	±.0003	2 PLACES ±	±.0015	±.0005	1 PLACE ±	±.0030	±.0010	<b>DIMENSION STYLE</b> IN/MM	<b>SCALE</b> ---	<b>DESIGN UNITS</b> INCH	<b>THIRD ANGLE PROJECTION</b> 
		MIN	INCH																		
	4 PLACES ±	±.0005	±.0002																		
	3 PLACES ±	±.0008	±.0003																		
2 PLACES ±	±.0015	±.0005																			
1 PLACE ±	±.0030	±.0010																			
<b>DRAWN BY</b> PEREZ-ARGUET <b>DATE</b> 1988/03/02 <b>CHECKED BY</b> PATEL <b>DATE</b> 1988/03/02 <b>APPROVED BY</b> LENZ <b>DATE</b> 1988/03/02	<b>TITLE</b> EDGE CARD CONNECTOR .156/(3.96) CENTERS CRIMP TYPE-2574 SERIES	<b>MATERIAL NO.</b> SEE CHART	<b>DOCUMENT NO.</b> SD-2574	<b>MOLEX INCORPORATED</b>	<b>SHEET NO.</b> 3 OF 3	<b>THIS DRAWING CONTAINS INFORMATION THAT IS PROPRIETARY TO MOLEX INCORPORATED AND SHOULD NOT BE USED WITHOUT WRITTEN PERMISSION</b>															