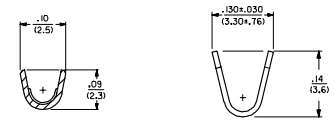
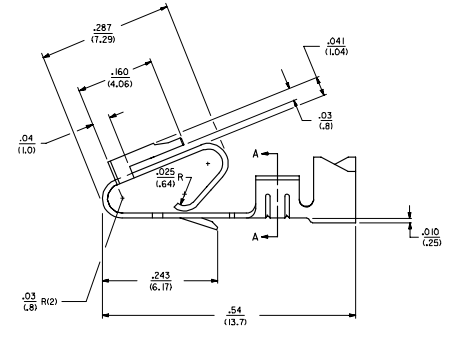
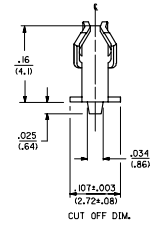
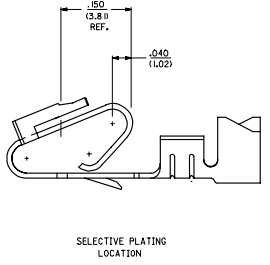


- NOTES:
1. MATERIAL: SEE LEGEND
 2. FINISH
 - 409 - OVERALL HOT TN DP: .000100/0.00254) MN.
 - 102 - OVERALL TN: .000200/0.00508) MN.
 - OVERALL COPPER: .000100/0.00254) MN.
 - 132 - OVERALL TN: .000200/0.00508) MN.
 - OVERALL COPPER: .000200/0.00508) MN.
 - 503 - OVERALL HARD GOLD: .000050/0.00127) MN.
 - OVERALL NICKEL: .000050/0.00127) MN.
 - 550 - SELECT HARD GOLD: .000050/0.00127) MN.
 - OVERALL NICKEL: .000030/0.00076) MN.
 - OVERALL HARD GOLD FLASH: .000022/0.00055) MN.
 - 555 - SELECT HARD GOLD: .000050/0.00127) MN.
 - OVERALL NICKEL: .000030/0.00076) MN.
 - 558 - SELECT HARD GOLD: .000030/0.00076) MN.
 - OVERALL NICKEL: .000050/0.00127) MN.
 - OVERALL HARD GOLD FLASH: .000022/0.00055) MN.
 - 561 - SELECT HARD GOLD: .000030/0.00076) MN.
 - OVERALL NICKEL: .000050/0.00127) MN.
 3. THE PRIMARY SHIPPING CARTON WILL BE LABELED "COMPLIANT TO RoHS DIRECTIVE 2002/95/EC AND ELV ANNEX II OF DIRECTIVE 2000/53/EC". CARTONS WITHOUT THIS LABEL MAY CONTAIN PRODUCT WITH TN-LEAD PLATING.
 3. PRODUCT SPECIFICATION: PS-42-02
 4. PACKAGING SPECIFICATION: CHAIN FORM SEE PK-8838-001
 5. TERMINAL FOR USE IN HOUSING NOS. 6442 AND 47695
 6. THIS PART WITH CRIMP FOR 22-26 AWG. WIRE. SEE DWS. NO. 7268
 7. CRIMP FOR 18 TO 20 GA. WIRE WITH MAX. INSULATION DIA. OF .300(2.76). STRIP LENGTH OF .125(100) / (3.18/2.54)
 8. DIMENSIONS GIVEN ACROSS CENTERLINES ARE SYMMETRICAL ABOUT THOSE CENTERLINES WITHIN HALF THE TOTAL TOLERANCE.
 9. THIS PART CONFORMS TO CLASS B REQUIREMENTS OF COSMETIC SPECIFICATION PS-45499-002.



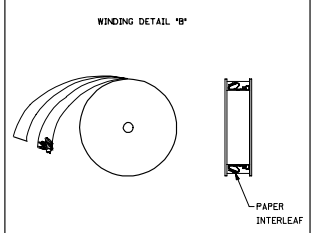
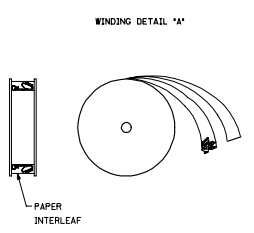
LEGEND: 6838- ()

MATERIAL: .127/.0106 THK
BLANK=BRASS
A=PHOS BRONZE

WINDING
A1 PER DETAIL A
BLANK= PER DETAIL B

FORM
BLANK= CHAIN
L= LOOSE

PLATING
SEE NOTE 2



ADD. NOTE 9 SEC. NO. LCP2008-0005 2007/07/08 DRAWN BY: CHHOB-BELL 2007/07/08 APPROVED BY: CHHOB-BELL 2007/07/08 AP2	QUALITY SYMBOLS	GENERAL TOLERANCES (UNLESS SPECIFIED)	DIMENSION STYLE	SCALE	DESIGN UNITS	THIRD ANGLE PROJECTION
	▽=0	mm INCH	IN/MM	---	INCH	⊙
	4 PLACES ±---	±.010	DRAWN BY: QUIZIK	DATE: 11/15/89	TITLE: TRIFURCON TERMINAL CRIMP TYPE .156 CENTERS 18 TO 20 AWG WIRE	DOCUMENT NO. MOLEX INCORPORATED SHEET NO. 1 OF 2
	3 PLACES ±---	±.015	CHECKED BY: PATEL	DATE: 11/15/89	SD-6838	
2 PLACES ±0.25	±---	APPROVED BY: LENZ	DATE: 11/15/89	DRAFT WHERE APPLICABLE MUST REMAIN WITHIN DIMENSIONS		
1 PLACE ±0.36	±---	SEE CHART				
ANGULAR ±1/2°	±---	THIS DRAWING CONTAINS INFORMATION THAT IS PROPRIETARY TO MOLEX INCORPORATED AND SHOULD NOT BE USED WITHOUT WRITTEN PERMISSION				

6838-(*)**		6838-A(*)**																	
PART NO.	ENG. NO.	PART NO.	ENG. NO.	PART NO.	ENG. NO.	PART NO.	ENG. NO.	PART NO.	ENG. NO.	PART NO.	ENG. NO.	PART NO.	ENG. NO.	PART NO.	ENG. NO.	PART NO.	ENG. NO.	PART NO.	ENG. NO.
08-50-0187	6838-(P909)																		
08-50-0189	6838-(P909L)	08-58-0187	6838-A(P558)																
08-50-0275	6838-(P909)-A	08-58-0189	6838-A(P558L)																
08-50-0026	6838-(P102)	08-60-0001	6838-A(132)																
08-50-0028	6838-(P102L)	08-60-0002	6838-A(132L)																
08-50-0029	6838-(102)	08-58-0102	6838-A(558)																
			6838-A(558L)																
		08-58-0108	6838-A(503)																
		08-58-0109	6838-A(503L)																
		08-52-0112	6838-A(P909)																
		08-52-0113	6838-A(P909L)																
		08-50-0024	6838-A(102)																
		08-50-0251	6838-A(102L)																
		08-58-0105	6838-A(P555)																
		08-58-0106	6838-A(P555L)																
		08-58-0110	6838-A(P561)																
		08-58-0111	6838-A(P561L)																
		08-58-0118	6838-A(561)																
		08-58-0119	6838-A(561L)																
		08-58-0131	6838-A(550)																
		08-58-0132	6838-A(550L)																

UPDATE TITLE BLOCK REC. NO. LCP2008-0005 2007/07/03 DRAWN BY 2 CHOD-BELL 2007/07/09 APPROVED BY 11/15/89 2007/07/02 11/15/89 2007/07/02	QUALITY SYMBOLS 	GENERAL TOLERANCES (UNLESS SPECIFIED) <table border="1"> <tr> <th></th> <th>mm</th> <th>INCH</th> </tr> <tr> <td>4 PLACES</td> <td>±.005</td> <td>±.0002</td> </tr> <tr> <td>3 PLACES</td> <td>±.008</td> <td>±.0003</td> </tr> <tr> <td>2 PLACES</td> <td>±.015</td> <td>±.0005</td> </tr> <tr> <td>1 PLACE</td> <td>±.030</td> <td>±.0010</td> </tr> </table>		mm	INCH	4 PLACES	±.005	±.0002	3 PLACES	±.008	±.0003	2 PLACES	±.015	±.0005	1 PLACE	±.030	±.0010	DIMENSION STYLE IN/MM DRAWN BY DATE QUI IK 11/15/89 CHECKED BY DATE PATEL 11/15/89 APPROVED BY DATE LENZ 11/15/89	SCALE --- INCH DESIGN UNITS INCH THIRD ANGLE PROJECTION
		mm	INCH																
	4 PLACES	±.005	±.0002																
	3 PLACES	±.008	±.0003																
2 PLACES	±.015	±.0005																	
1 PLACE	±.030	±.0010																	
DRAFT WHERE APPLICABLE MUST REMAIN WITHIN DIMENSIONS		SEE CHART THIS DRAWING CONTAINS INFORMATION THAT IS PROPRIETARY TO MOLEX INCORPORATED AND SHOULD NOT BE USED WITHOUT WRITTEN PERMISSION	MATERIAL NO. DOCUMENT NO. SD-6838	TITLE TRIFURCON TERMINAL CRIMP TYPE, .156 CENTERS 18 TO 20 AWG WIRE MOLEX INCORPORATED															
				SHEET NO. 2 OF 2															