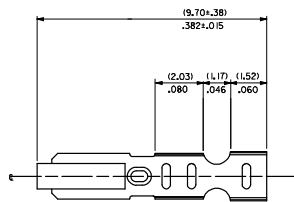
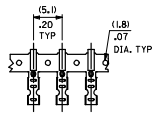


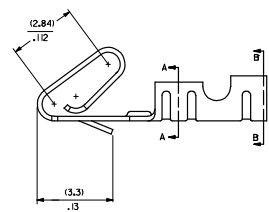
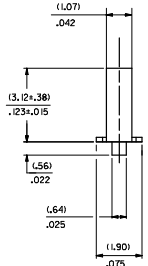
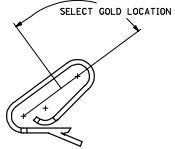
20 19 18 17 16 15 14 13 12 11 10 9 8 7 6 5 4 3 2 1

CARRIER VIEW

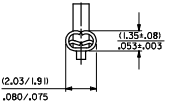


- NOTES
1. MATERIAL  
10.2030G.010/.0080+.0004 THICK BRASS
  2. FINISH  
102 - OVERALL TIN: (0.00508)/.000200 MIN. TIN OVER  
(0.00254)/.000100 MIN. COPPER  
122 - OVERALL TIN: (0.00381)/.000150 MIN. TIN OVER  
(0.00076)/.000030 MIN. NICKEL  
#P909 - OVERALL HOT TIN DP: (0.00254)/.000100 MIN.  
550 - SELECT GOLD: (0.00038)/.000015 MIN.  
OVERALL GOLD FLASH: (0.00005)/.000002 MIN.  
OVERALL NICKEL UNDERPLATE: (0.00076)/.000030 MIN.  
555 - SELECT GOLD: (0.00038)/.000015 MIN.  
OVERALL NICKEL UNDERPLATE: (0.00076)/.000030 MIN.  
558 - SELECT GOLD: (0.00076)/.000030 MIN.  
OVERALL GOLD FLASH: (0.00005)/.000002 MIN.  
OVERALL NICKEL UNDERPLATE: (0.00127)/.000050 MIN.  
\*THE PRIMARY SHIPPING CARTON WILL BE LABELED "COMPLIANT TO RoHS  
DIRECTIVE 2002/95/EC AND ELV ANNEX I OF DIRECTIVE 2000/53/EC."  
CARTONS WITHOUT THIS LABEL MAY CONTAIN PRODUCT WITH TIN-LEAD PLATING.
  3. PRODUCT SPEC: PS-0-07
  4. PACKAGING SPECIFICATION NONE
  5. CRIMP IS FOR 22-30 GA WIRE WITH (.157)/.062 DIA INSULATION MAX.
  6. INSERTION FORCE OF TERMINAL INTO (.254)/.100 CENTERLINE CONNECTOR IS 2.5 LBS. MAX
  7. TERMINALS WILL RETAIN 8 LBS PULL FOR 1 MIN. IN A (.254)/.100 CENTERLINE HOUSING.
  8. DIMENSIONS GIVEN ACROSS CENTERLINES ARE SYMMETRICAL ABOUT THOSE CENTERLINES WITHIN HALF THE TOTAL TOLERANCE.
  9. CODE LETTER PRECEDING PART NO. DESIGNATES MANUFACTURING LOCATION: IRELAND
  10. THIS PART CONFORMS TO CLASS B REQUIREMENTS OF COSMETIC SPECIFICATION PS-45499-002.

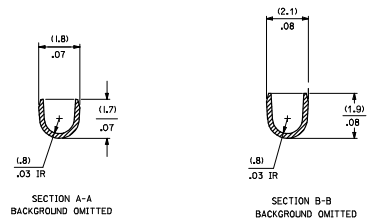
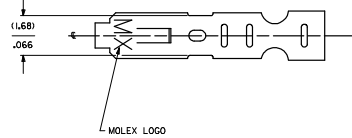
SELECT GOLD LOCATION



CRIMP DETAIL



CRIMPED TERMINAL 2759-I#90 IRLC IS USED WITHOUT WIRE AND IS INSERTED INTO HOUSING TO PROVIDE TENSION WHEN ASSEMBLED TO HEADERS DURING SHIPMENT.



- 2759-I#90
- FORM
  - L=LOOSE
  - C=LOOSE CRIMPED
  - A=CHAIN PER ES-339-A
  - B=CHAIN PER ES-339-B
- PLATING  
SEE NOTE 2

QUALITY SYMBOLS ▽=0 ▽=0	GENERAL TOLERANCES (UNLESS SPECIFIED) DIM INCH 4 PLACES ±.005 3 PLACES ±.010 2 PLACES ±.025 1 PLACE ±.036 ANGULAR ±1/2°		DIMENSION STYLE MM/IN DRAWN BY DATE SAMIEC 07/28/87 CHECKED BY DATE PATEL 07/28/87 APPROVED BY DATE LENZ 07/28/87		SCALE --- DESIGN UNITS INCH	THIRD ANGLE PROJECTION
	MATERIAL NO. SEE CHART DOCUMENT NO. SD-2759		TITLE CRIMP TERMINAL 22-30 GA WIRE		MOLEX INCORPORATED	SHEET NO. 1 OF 2

19 18 17 16 15 14 13 12 11 10 9 8 7 6 5 4 3 2 1

